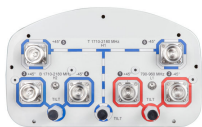


MBDHH-65C-VTM



6-port sector antenna, 2x 790–960 and 4x 1710–2180 MHz, 65° HPBW, RET compatible

- Three DualPol® antennas under one radome

OBSOLETE

This product was discontinued on: **March 31, 2021**

Replaced By:

RVV-65D-R3 6-port sector antenna, 2 x 694-960 and 4x 1695–2690 MHz, 65° HPBW, 3x RET

General Specifications

Antenna Type	Sector
Band	Multiband
Color	Light Gray (RAL 7035)
Grounding Type	RF connector inner conductor and body grounded to reflector and mounting bracket
Performance Note	Outdoor usage Wind loading figures are validated by wind tunnel measurements described in white paper WP-112534-EN
Radome Material	Fiberglass, UV resistant
Radiator Material	Aluminum
RF Connector Interface	7-16 DIN Female
RF Connector Location	Bottom
RF Connector Quantity, high band	4
RF Connector Quantity, low band	2
RF Connector Quantity, total	6

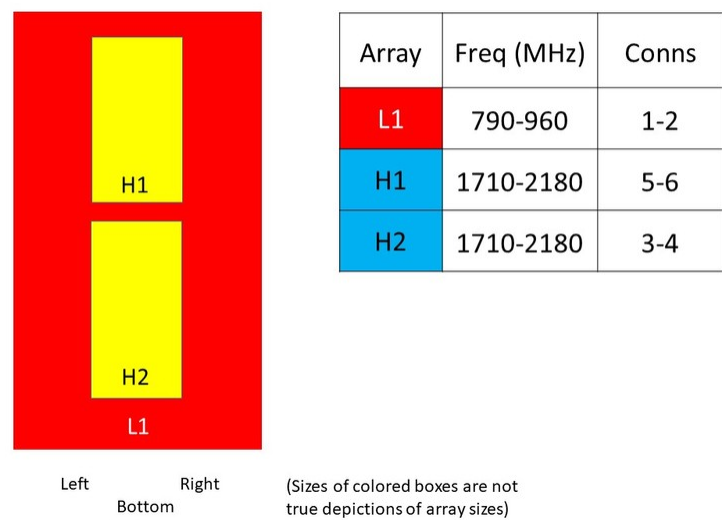
Dimensions

Width	301 mm 11.85 in
Depth	181 mm 7.126 in
Length	2578 mm 101.496 in

MBDHH-65C-VTM

Net Weight, without mounting kit23.5 kg | 51.809 lb

Array Layout



Electrical Specifications

Impedance50 ohm

Operating Frequency Band1710 – 2180 MHz | 790 – 960 MHz

Polarization±45°

Electrical Specifications

	LB	LB	HB1	HB1	HB1	HB2	HB2	HB2
Frequency Band, MHz	790–896	870–960	1710–1880	1850–1990	1920–2180	1710–1880	1850–1990	1920–2180
Gain, dBi	16.5	17	17.4	17.5	17.5	16.6	16.6	16.8
Beamwidth, Horizontal, degrees	69	67	59	59	58	62	60	58
Beamwidth, Vertical, degrees	7.9	7.1	7.1	6.7	6.2	7	6.7	6.3
Beam Tilt, degrees	1–9	1–9	0–10	0–10	0–10	0–10	0–10	0–10
USLS, typical, dB	15	16	14	14	15	14	14	14
Front-to-Back Ratio at 180°, dB	27	32	31	29	29	30	29	28
CPR at Boresight, dB	22	24	20	19	18	20	20	18
CPR at Sector, dB	14	8	12	14	12	12	12	13
Isolation, Cross Polarization,	30	30	30	30	30	30	30	30

MBDHH-65C-VTM

dB								
Isolation, Inter-band, dB	30	30	30	30	30	30	30	30
VSWR Return loss, dB	1.5 14.0	1.5 14.0	1.5 14.0	1.5 14.0	1.5 14.0	1.5 14.0	1.5 14.0	1.5 14.0
PIM, 3rd Order, 2 x 20 W, dBc	-150	-150	-150	-150	-150	-150	-150	-150
Input Power per Port, maximum, watts	300	300	250	250	250	250	250	250

Electrical Specifications, BASTA

Frequency Band, MHz	790–896	870–960	1710–1880	1850–1990	1920–2180	1710–1880	1850–1990	1920–2180
Beamwidth, Horizontal Tolerance, degrees	±3	±4.0	±5	±5	±5	±5	±5	±4.0

Mechanical Specifications

Wind Loading @ Velocity, frontal	420.0 N @ 150 km/h (94.4 lbf @ 150 km/h)
Wind Loading @ Velocity, lateral	355.0 N @ 150 km/h (79.8 lbf @ 150 km/h)
Wind Loading @ Velocity, maximum	809.0 N @ 150 km/h (181.9 lbf @ 150 km/h)
Wind Loading @ Velocity, rear	426.0 N @ 150 km/h (95.8 lbf @ 150 km/h)
Wind Speed, maximum	241 km/h (150 mph)

Packaging and Weights

Width, packed	413 mm 16.26 in
Depth, packed	292 mm 11.496 in
Length, packed	2894 mm 113.937 in
Weight, gross	39.1 kg 86.201 lb

Regulatory Compliance/Certifications

Agency	Classification
CE	Compliant with the relevant CE product directives
CHINA-ROHS	Below maximum concentration value
ISO 9001:2015	Designed, manufactured and/or distributed under this quality management system
REACH-SVHC	Compliant as per SVHC revision on www.commscope.com/ProductCompliance
ROHS	Compliant
UK-ROHS	Compliant



MBDHH-65C-VTM

Included Products

- BSAMNT-3 – Wide Profile Antenna Downtilt Mounting Kit for 2.4 - 4.5 in (60 - 115 mm) OD round members. Kit contains one scissor top bracket set and one bottom bracket set.

* Footnotes

Performance Note Severe environmental conditions may degrade optimum performance