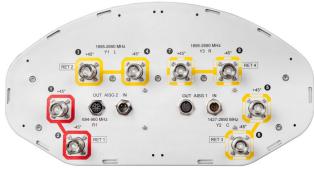


RZVV-65B-R4-V4



8-port sector antenna, 2x 694–960, 2x 1427–2690 and 4x 1695–2690 MHz, 65° HPBW, 4x RET

- Uses the 4.3-10 connector which is 40 percent smaller than the 7-16 DIN connector
- Supports re-configurable antenna sharing capability enabling control of the internal RET system using up to two separate RET compatible OEM radios

General Specifications

Antenna Type	Sector
Band	Multiband
Grounding Type	RF connector inner conductor and body grounded to reflector and mounting bracket
Performance Note	Outdoor usage
Radome Material	Fiberglass, UV resistant
Reflector Material	Aluminum
RF Connector Interface	4.3-10 Female
RF Connector Location	Bottom
RF Connector Quantity, high band	6
RF Connector Quantity, low band	2
RF Connector Quantity, total	8

Remote Electrical Tilt (RET) Information

RET Hardware	CommRET v2
RET Interface	8-pin DIN Female 8-pin DIN Male
RET Interface, quantity	2 female 2 male
Input Voltage	10–30 Vdc
Internal RET	High band (3) Low band (1)
Power Consumption, idle state, maximum	1 W
Power Consumption, normal conditions, maximum	8 W
Protocol	3GPP/AISG 2.0 (Single RET)

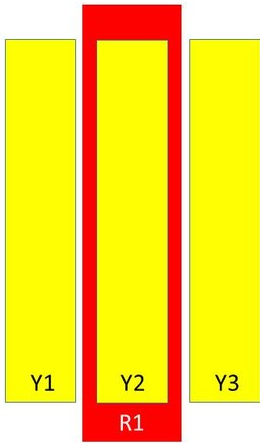
Dimensions

Width	395 mm 15.551 in
--------------	--------------------

RZVV-65B-R4-V4

Depth	203 mm 7.992 in
Length	1980 mm 77.953 in
Net Weight, without mounting kit	29.6 kg 65.257 lb

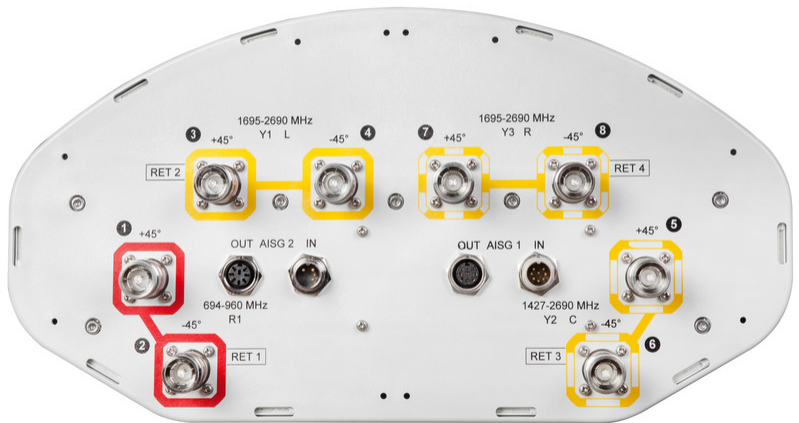
Array Layout



Array	Freq (MHz)	Conns	RET (SRET)	AISG RET UID
R1	694-960	1-2	1	CPxxxxxxxxxxxxxxxxR1
Y1	1695-2690	3-4	2	CPxxxxxxxxxxxxxxxxY1
Y2	1427-2690	5-6	3	CPxxxxxxxxxxxxxxxxY2
Y3	1695-2690	7-8	4	CPxxxxxxxxxxxxxxxxY3

Left Bottom Right (Sizes of colored boxes are not true depictions of array sizes)

Port Configuration



RZVV-65B-R4-V4

Electrical Specifications

Impedance	50 ohm
Operating Frequency Band	1427 – 2690 MHz 1695 – 2690 MHz 694 – 960 MHz
Polarization	±45°
Total Input Power, maximum	800 W @ 50 °C

Electrical Specifications

Frequency Band, MHz	694–790	790–862	880–960	1427–1518	1695–1920	1920–2180	2300–2500	2490–2690
Gain, dBi	14.7	15.2	15.3	16.1	17.3	18.4	18.9	18.7
Beamwidth, Horizontal, degrees	73	71	70	67	69	64	56	54
Beamwidth, Vertical, degrees	12.1	11	10.1	7	5.9	5.2	4.5	4.3
Beam Tilt, degrees	2–14	2–14	2–14	2–12	2–12	2–12	2–12	2–12
USLS (First Lobe), dB	14	15	14	19	18	17	15	14
Front-to-Back Ratio at 180°, dB	34	36	32	29	34	33	33	30
Isolation, Cross Polarization, dB	28	28	28	28	28	28	28	28
Isolation, Inter-band, dB	28	28	28	28	28	28	28	28
VSWR Return loss, dB	1.5 14.0	1.5 14.0	1.5 14.0	1.5 14.0	1.5 14.0	1.5 14.0	1.5 14.0	1.5 14.0
PIM, 3rd Order, 2 x 20 W, dBc	-150	-150	-150	-150	-150	-150	-150	-150
Input Power per Port at 50°C, maximum, watts	300	300	300	250	250	250	200	200

Electrical Specifications, BASTA

Frequency Band, MHz	694–790	790–862	880–960	1427–1518	1695–1920	1920–2180	2300–2500	2490–2690
Gain by all Beam Tilts, average, dBi	14.5	14.9	15.1	15.8	17	18	18.6	18.2
Gain by all Beam Tilts Tolerance, dB	±0.3	±0.3	±0.3	±0.4	±0.7	±0.6	±0.6	±0.7
Gain by Beam Tilt, average, dBi	2° 14.4 8° 14.5 14° 14.4	2° 14.8 8° 15.0 14° 14.9	2° 15.0 8° 15.1 14° 15.0	2° 15.7 7° 15.8 12° 15.8	2° 16.9 7° 17.1 12° 16.9	2° 17.9 7° 18.1 12° 17.7	2° 18.7 7° 18.8 12° 18.0	2° 18.2 7° 18.3 12° 17.8
Beamwidth, Horizontal Tolerance, degrees	±2.6	±2.4	±1.5	±2.6	±5	±7.5	±7	±8
Beamwidth, Vertical Tolerance, degrees	±0.9	±0.5	±0.6	±0.3	±0.5	±0.4	±0.2	±0.3
USLS, beampeak to 20° above	14	15	14	17	17	17	15	13

RZVV-65B-R4-V4

beampeak, dB

Front-to-Back Total Power at 180° ± 30°, dB	23	23	23	25	25	26	26	24
CPR at Boresight, dB	14	14	15	18	17	19	17	17
CPR at Sector, dB	10	10	8	4	9	9	8	3

Mechanical Specifications

Effective Projective Area (EPA), frontal	0.49 m ² 5.274 ft ²
Effective Projective Area (EPA), lateral	0.25 m ² 2.691 ft ²
Mechanical Tilt Range	0°–12°
Wind Loading @ Velocity, frontal	519.0 N @ 150 km/h (116.7 lbf @ 150 km/h)
Wind Loading @ Velocity, lateral	268.0 N @ 150 km/h (60.2 lbf @ 150 km/h)
Wind Loading @ Velocity, maximum	662.0 N @ 150 km/h (148.8 lbf @ 150 km/h)
Wind Loading @ Velocity, rear	497.0 N @ 150 km/h (111.7 lbf @ 150 km/h)
Wind Speed, maximum	241 km/h (150 mph)

Packaging and Weights

Width, packed	532 mm 20.945 in
Depth, packed	387 mm 15.236 in
Length, packed	2127 mm 83.74 in
Weight, gross	44.9 kg 98.987 lb

Regulatory Compliance/Certifications

Agency	Classification
CHINA-ROHS	Above maximum concentration value
ISO 9001:2015	Designed, manufactured and/or distributed under this quality management system
ROHS	Compliant/Exempted
UK-ROHS	Compliant/Exempted



Included Products

- BSAMNT-4 – Wide Profile Antenna Downtilt Mounting Kit for 2.4 - 4.5 in (60 - 115 mm) OD round members. Kit contains one scissor top bracket set and one bottom bracket set.

RZVV-65B-R4-V4

* Footnotes

Performance Note

Severe environmental conditions may degrade optimum performance