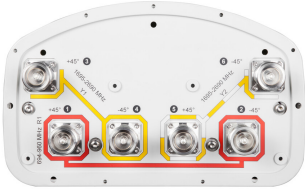


RVV65A-M



6-port sector antenna, 2x 694–960 and 4x 1695–2690 MHz, 65° HPBW, RET compatible

- Three DualPol® antennas under one radome
- Utilizes AccuRET® actuator(s) on the back of the antenna
- High band antennas are arranged side-by-side for optimum MIMO 4x4/4x2 performance

OBSOLETE

This product was discontinued on: November 30, 2023

Replaced By:

RVV-65A-R3

6-port sector antenna, 2x 694–960 and 4x 1695–2690 MHz, 65° HPBW, 3x RET

General Specifications

Antenna Type	Sector
Band	Multiband
Color	Light Gray (RAL 7035)
Grounding Type	RF connector inner conductor and body grounded to reflector and mounting bracket
Performance Note	Outdoor usage Wind loading figures are validated by wind tunnel measurements described in white paper WP-112534-EN
Radome Material	Fiberglass, UV resistant
Radiator Material	Aluminum Low loss circuit board
Reflector Material	Aluminum
RF Connector Interface	7-16 DIN Female
RF Connector Location	Bottom
RF Connector Quantity, high band	4
RF Connector Quantity, low band	2
RF Connector Quantity, total	6

Remote Electrical Tilt (RET) Information

Model with Factory Installed AISG 2.0 Actuator	RVV65A-3X2
---	------------

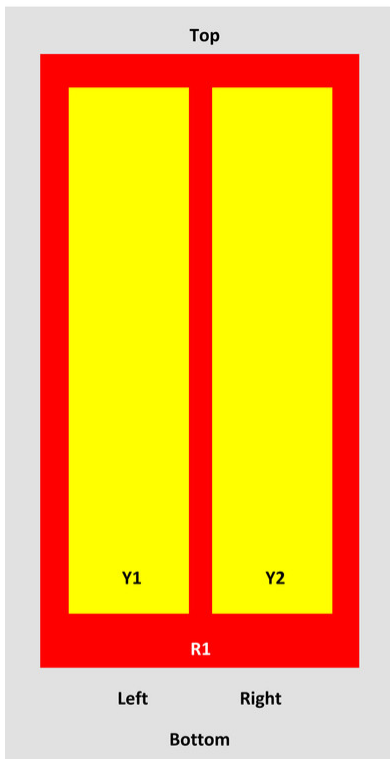
Dimensions

RVV65A-M

Width	301 mm 11.85 in
Depth	181 mm 7.126 in
Length	1412 mm 55.591 in
Net Weight, without mounting kit	17.4 kg 38.36 lb

Array Layout

RVV65A-M, RVV65A-3X2



Array	Freq (MHz)	Coms
R1	694-960	1-2
Y1	1695-2690	3-4
Y2	1695-2690	5-6

View from the front of the antenna

(Sizes of colored boxes are not true depictions of array sizes)

Electrical Specifications

Impedance	50 ohm
Operating Frequency Band	1695 – 2690 MHz 694 – 960 MHz
Polarization	±45°
Total Input Power, maximum	650 W @ 50 °C

RVV65A-M

Electrical Specifications

Frequency Band, MHz	694–790	790–890	890–960	1695–1920	1920–2180	2300–2690
Gain, dBi	14.2	14.3	14.6	17.4	17.9	18.3
Beamwidth, Horizontal, degrees	73	71	69	60	63	61
Beamwidth, Vertical, degrees	16.9	15.3	14.3	7.1	6.5	5.4
Beam Tilt, degrees	3–18	3–18	3–18	3–13	3–13	3–13
USLS (First Lobe), dB	15	15	13	16	15	14
Front-to-Back Ratio at 180°, dB	28	35	30	31	31	31
Isolation, Cross Polarization, dB	25	25	25	25	25	25
Isolation, Inter-band, dB	30	30	30	30	30	30
VSWR Return loss, dB	1.5 14.0	1.5 14.0	1.5 14.0	1.5 14.0	1.5 14.0	1.5 14.0
PIM, 3rd Order, 2 x 20 W, dBc	-150	-150	-150	-150	-150	-150
Input Power per Port at 50°C, maximum, watts	300	300	300	250	250	200

Electrical Specifications, BASTA

Frequency Band, MHz	694–790	790–890	890–960	1695–1920	1920–2180	2300–2690
Gain by all Beam Tilts, average, dBi	13.8	14.1	14.2	16.7	17.4	17.8
Gain by all Beam Tilts Tolerance, dB	±0.5	±0.3	±0.4	±1	±0.5	±0.7
Gain by Beam Tilt, average, dBi	3° 13.8 10° 13.8 18° 13.6	3° 14.2 10° 14.2 18° 13.9	3° 14.5 10° 14.2 18° 13.8	3° 16.7 8° 16.8 13° 16.4	3° 17.3 8° 17.6 13° 17.2	3° 17.8 8° 18.0 13° 17.1
Beamwidth, Horizontal Tolerance, degrees	±1.8	±1.8	±3.3	±7.5	±8	±5.6
Beamwidth, Vertical Tolerance, degrees	±1.1	±0.8	±1.1	±0.5	±0.5	±0.4
USLS, beampeak to 20° above beampeak, dB	16	18	17	12	14	12
Front-to-Back Total Power at 180° ± 30°, dB	23	24	21	23	23	23
CPR at Boresight, dB	21	21	20	14	15	18
CPR at Sector, dB	8	10	8	9	10	7

Mechanical Specifications

Wind Loading @ Velocity, frontal

205.0 N @ 150 km/h (46.1 lbf @ 150 km/h)

RVV65A-M

Wind Loading @ Velocity, lateral	169.0 N @ 150 km/h (38.0 lbf @ 150 km/h)
Wind Loading @ Velocity, maximum	396.0 N @ 150 km/h (89.0 lbf @ 150 km/h)
Wind Loading @ Velocity, rear	208.0 N @ 150 km/h (46.8 lbf @ 150 km/h)
Wind Speed, maximum	241 km/h (150 mph)

Packaging and Weights

Width, packed	429 mm 16.89 in
Depth, packed	329 mm 12.953 in
Length, packed	1672 mm 65.827 in
Weight, gross	30.7 kg 67.682 lb

Regulatory Compliance/Certifications

Agency	Classification
CE	Compliant with the relevant CE product directives
CHINA-ROHS	Below maximum concentration value
ISO 9001:2015	Designed, manufactured and/or distributed under this quality management system
REACH-SVHC	Compliant as per SVHC revision on www.commscope.com/ProductCompliance
ROHS	Compliant
UK-ROHS	Compliant



Included Products

BSAMNT-OFFSET	– Forward Offset Pipe Mounting Kit for 4.5 in (114.3 mm) OD round members
---------------	---

* Footnotes

Performance Note	Severe environmental conditions may degrade optimum performance
-------------------------	---