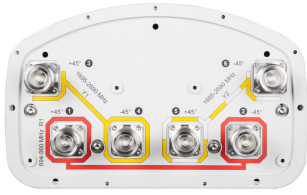


RVV65A-M



6-port sector antenna, 2x 694–960 and 4x 1695–2690 MHz, 65° HPBW, RET compatible

- Three DualPol® antennas under one radome
- Utilizes AccuRET® actuator(s) on the back of the antenna
- High band antennas are arranged side-by-side for optimum MIMO 4x4/4x2 performance

OBSOLETE

This product was discontinued on: November 30, 2023

Replaced By:

RVV-65A-R3

6-port sector antenna, 2x 694–960 and 4x 1695–2690 MHz, 65° HPBW, 3x RET

General Specifications

| | |
|---|--|
| Antenna Type | Sector |
| Band | Multiband |
| Color | Light Gray (RAL 7035) |
| Grounding Type | RF connector inner conductor and body grounded to reflector and mounting bracket |
| Performance Note | Outdoor usage Wind loading figures are validated by wind tunnel measurements described in white paper WP-112534-EN |
| Radome Material | Fiberglass, UV resistant |
| Radiator Material | Aluminum Low loss circuit board |
| Reflector Material | Aluminum |
| RF Connector Interface | 7-16 DIN Female |
| RF Connector Location | Bottom |
| RF Connector Quantity, high band | 4 |
| RF Connector Quantity, low band | 2 |
| RF Connector Quantity, total | 6 |

Remote Electrical Tilt (RET) Information

| | |
|---|------------|
| Model with Factory Installed AISG 2.0 Actuator | RVV65A-3X2 |
|---|------------|

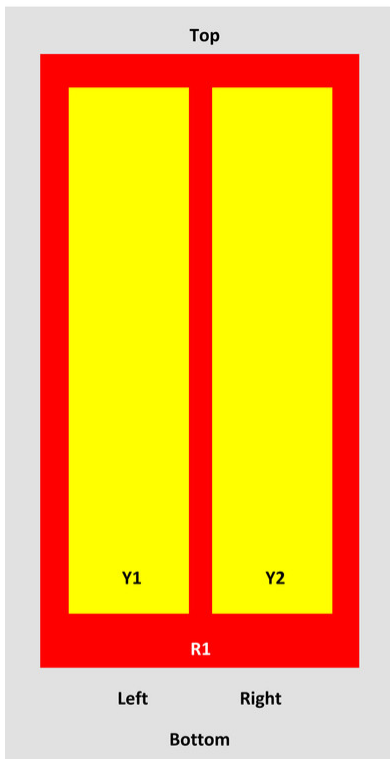
Dimensions

RVV65A-M

| | |
|---|---------------------|
| Width | 301 mm 11.85 in |
| Depth | 181 mm 7.126 in |
| Length | 1412 mm 55.591 in |
| Net Weight, without mounting kit | 17.4 kg 38.36 lb |

Array Layout

RVV65A-M, RVV65A-3X2



| Array | Freq (MHz) | Coms |
|-------|------------|------|
| R1 | 694-960 | 1-2 |
| Y1 | 1695-2690 | 3-4 |
| Y2 | 1695-2690 | 5-6 |

View from the front of the antenna

(Sizes of colored boxes are not true depictions of array sizes)

Electrical Specifications

| | |
|-----------------------------------|---------------------------------|
| Impedance | 50 ohm |
| Operating Frequency Band | 1695 – 2690 MHz 694 – 960 MHz |
| Polarization | ±45° |
| Total Input Power, maximum | 650 W @ 50 °C |

RVV65A-M

Electrical Specifications

| Frequency Band, MHz | 694–790 | 790–890 | 890–960 | 1695–1920 | 1920–2180 | 2300–2690 |
|--|----------|----------|----------|-----------|-----------|-----------|
| Gain, dBi | 14.2 | 14.3 | 14.6 | 17.4 | 17.9 | 18.3 |
| Beamwidth, Horizontal, degrees | 73 | 71 | 69 | 60 | 63 | 61 |
| Beamwidth, Vertical, degrees | 16.9 | 15.3 | 14.3 | 7.1 | 6.5 | 5.4 |
| Beam Tilt, degrees | 3–18 | 3–18 | 3–18 | 3–13 | 3–13 | 3–13 |
| USLS (First Lobe), dB | 15 | 15 | 13 | 16 | 15 | 14 |
| Front-to-Back Ratio at 180°, dB | 28 | 35 | 30 | 31 | 31 | 31 |
| Isolation, Cross Polarization, dB | 25 | 25 | 25 | 25 | 25 | 25 |
| Isolation, Inter-band, dB | 30 | 30 | 30 | 30 | 30 | 30 |
| VSWR Return loss, dB | 1.5 14.0 | 1.5 14.0 | 1.5 14.0 | 1.5 14.0 | 1.5 14.0 | 1.5 14.0 |
| PIM, 3rd Order, 2 x 20 W, dBc | -150 | -150 | -150 | -150 | -150 | -150 |
| Input Power per Port at 50°C, maximum, watts | 300 | 300 | 300 | 250 | 250 | 200 |

Electrical Specifications, BASTA

| Frequency Band, MHz | 694–790 | 790–890 | 890–960 | 1695–1920 | 1920–2180 | 2300–2690 |
|---|---------------------------------|---------------------------------|---------------------------------|--------------------------------|--------------------------------|--------------------------------|
| Gain by all Beam Tilts, average, dBi | 13.8 | 14.1 | 14.2 | 16.7 | 17.4 | 17.8 |
| Gain by all Beam Tilts Tolerance, dB | ±0.5 | ±0.3 | ±0.4 | ±1 | ±0.5 | ±0.7 |
| Gain by Beam Tilt, average, dBi | 3° 13.8 10° 13.8 18° 13.6 | 3° 14.2 10° 14.2 18° 13.9 | 3° 14.5 10° 14.2 18° 13.8 | 3° 16.7 8° 16.8 13° 16.4 | 3° 17.3 8° 17.6 13° 17.2 | 3° 17.8 8° 18.0 13° 17.1 |
| Beamwidth, Horizontal Tolerance, degrees | ±1.8 | ±1.8 | ±3.3 | ±7.5 | ±8 | ±5.6 |
| Beamwidth, Vertical Tolerance, degrees | ±1.1 | ±0.8 | ±1.1 | ±0.5 | ±0.5 | ±0.4 |
| USLS, beampeak to 20° above beampeak, dB | 16 | 18 | 17 | 12 | 14 | 12 |
| Front-to-Back Total Power at 180° ± 30°, dB | 23 | 24 | 21 | 23 | 23 | 23 |
| CPR at Boresight, dB | 21 | 21 | 20 | 14 | 15 | 18 |
| CPR at Sector, dB | 8 | 10 | 8 | 9 | 10 | 7 |

Mechanical Specifications

Wind Loading @ Velocity, frontal

205.0 N @ 150 km/h (46.1 lbf @ 150 km/h)

RVV65A-M

| | |
|---|--|
| Wind Loading @ Velocity, lateral | 169.0 N @ 150 km/h (38.0 lbf @ 150 km/h) |
| Wind Loading @ Velocity, maximum | 396.0 N @ 150 km/h (89.0 lbf @ 150 km/h) |
| Wind Loading @ Velocity, rear | 208.0 N @ 150 km/h (46.8 lbf @ 150 km/h) |
| Wind Speed, maximum | 241 km/h (150 mph) |

Packaging and Weights

| | |
|-----------------------|---------------------|
| Width, packed | 429 mm 16.89 in |
| Depth, packed | 329 mm 12.953 in |
| Length, packed | 1672 mm 65.827 in |
| Weight, gross | 30.7 kg 67.682 lb |

Regulatory Compliance/Certifications

| Agency | Classification |
|---------------|--|
| CE | Compliant with the relevant CE product directives |
| CHINA-ROHS | Below maximum concentration value |
| ISO 9001:2015 | Designed, manufactured and/or distributed under this quality management system |
| REACH-SVHC | Compliant as per SVHC revision on www.commscope.com/ProductCompliance |
| ROHS | Compliant |
| UK-ROHS | Compliant |



Included Products

| | |
|---------------|---|
| BSAMNT-OFFSET | - Forward Offset Pipe Mounting Kit for 4.5 in (114.3 mm) OD round members |
|---------------|---|

* Footnotes

| | |
|-------------------------|---|
| Performance Note | Severe environmental conditions may degrade optimum performance |
|-------------------------|---|

BSAMNT-OFFSET



Forward Offset Pipe Mounting Kit for 4.5 in (114.3 mm) OD round members

Product Classification

Product Type Pipe mounting kit

General Specifications

Application Outdoor

Color Silver

Dimensions

Compatible Diameter, maximum 114.3 mm | 4.5 in

Compatible Diameter, minimum 61 mm | 2.402 in

Weight, net 3.5 kg | 7.716 lb

Material Specifications

Material Type Galvanized steel

Packaging and Weights

Included Brackets | Hardware

Packaging quantity 1

Regulatory Compliance/Certifications

| Agency | Classification |
|---------------|--|
| CE | Compliant with the relevant CE product directives |
| CHINA-ROHS | Below maximum concentration value |
| ISO 9001:2015 | Designed, manufactured and/or distributed under this quality management system |
| REACH-SVHC | Compliant as per SVHC revision on www.commscope.com/ProductCompliance |
| ROHS | Compliant |
| UK-ROHS | Compliant |



BSAMNT-OFFSET
