

# HH45A-2XB1



4-port sector antenna, 4x 1710–2180 MHz, 45° HPBW, 2x RET. An Internal Smart Bias Tee is configured on Port 1. Ideal for capacity optimization and supports 4 x 4 MIMO.

## OBSOLETE

This product was discontinued on: September 30, 2020

## General Specifications

<b>Antenna Type</b>	Sector
<b>Band</b>	Single band
<b>Color</b>	Light Gray (RAL 7035)
<b>Grounding Type</b>	RF connector body grounded to reflector and mounting bracket
<b>Performance Note</b>	Outdoor usage
<b>Radome Material</b>	Fiberglass, UV resistant
<b>Radiator Material</b>	Low loss circuit board
<b>Reflector Material</b>	Aluminum
<b>RF Connector Interface</b>	7-16 DIN Female
<b>RF Connector Location</b>	Bottom
<b>RF Connector Quantity, high band</b>	4
<b>RF Connector Quantity, total</b>	4

## Remote Electrical Tilt (RET) Information

<b>RET Interface</b>	8-pin DIN Female   8-pin DIN Male
<b>RET Interface, quantity</b>	1 female   1 male
<b>Input Voltage</b>	10–30 Vdc
<b>Internal Bias Tee</b>	Port 1
<b>Internal RET</b>	High band (2)
<b>Power Consumption, idle state, maximum</b>	2 W
<b>Power Consumption, normal conditions, maximum</b>	13 W
<b>Protocol</b>	3GPP/AISG 2.0 (Multi-RET)

# HH45A-2XB1

## Dimensions

<b>Width</b>	407 mm   16.024 in
<b>Depth</b>	120 mm   4.724 in
<b>Length</b>	1278 mm   50.315 in
<b>Net Weight, without mounting kit</b>	14.7 kg   32.408 lb

## Electrical Specifications

<b>Impedance</b>	50 ohm
<b>Operating Frequency Band</b>	1710 – 2180 MHz
<b>Polarization</b>	±45°

## Electrical Specifications

<b>Frequency Band, MHz</b>	<b>1710–1880</b>	<b>1850–1990</b>	<b>1920–2180</b>
<b>Gain, dBi</b>	18.2	18.9	19.2
<b>Beamwidth, Horizontal, degrees</b>	46	44	43
<b>Beamwidth, Vertical, degrees</b>	7.4	7	6.6
<b>Beam Tilt, degrees</b>	2–12	2–12	2–12
<b>USLS (First Lobe), dB</b>	17	16	16
<b>Front-to-Back Ratio at 180°, dB</b>	35	30	28
<b>Isolation, Cross Polarization, dB</b>	28	28	28
<b>Isolation, Inter-band, dB</b>	30	30	30
<b>VSWR   Return loss, dB</b>	1.5   14.0	1.5   14.0	1.5   14.0
<b>PIM, 3rd Order, 2 x 20 W, dBc</b>	-153	-153	-153
<b>Input Power per Port, maximum, watts</b>	300	300	300

## Electrical Specifications, BASTA

<b>Frequency Band, MHz</b>	<b>1710–1880</b>	<b>1850–1990</b>	<b>1920–2180</b>
<b>Gain by all Beam Tilts, average, dBi</b>	17.8	18.5	18.8
<b>Gain by all Beam Tilts Tolerance, dB</b>	±0.5	±0.5	±0.4
<b>Gain by Beam Tilt, average, dBi</b>	2°   17.7 7°   17.9 12°   17.8	2°   18.3 7°   18.6 12°   18.5	2°   18.6 7°   18.9 12°   18.5
<b>Beamwidth, Horizontal Tolerance, degrees</b>	±2.5	±1.9	±2.1
<b>Beamwidth, Vertical Tolerance, degrees</b>	±0.4	±0.3	±0.5
<b>USLS, beampeak to 20° above beampeak, dB</b>	15	18	18

# HH45A-2XB1

<b>Front-to-Back Total Power at 180° ± 30°, dB</b>	27	26	26
<b>CPR at Boresight, dB</b>	17	17	16
<b>CPR at Sector, dB</b>	11	13	14

## Mechanical Specifications

<b>Wind Loading @ Velocity, frontal</b>	577.0 N @ 150 km/h (129.7 lbf @ 150 km/h)
<b>Wind Loading @ Velocity, lateral</b>	88.0 N @ 150 km/h (19.8 lbf @ 150 km/h)
<b>Wind Loading @ Velocity, rear</b>	675.0 N @ 150 km/h (151.7 lbf @ 150 km/h)
<b>Wind Speed, maximum</b>	241 km/h (150 mph)

## Packaging and Weights

<b>Width, packed</b>	552 mm   21.732 in
<b>Depth, packed</b>	292 mm   11.496 in
<b>Length, packed</b>	1403 mm   55.236 in
<b>Weight, gross</b>	26.2 kg   57.761 lb

## Regulatory Compliance/Certifications

<b>Agency</b>	<b>Classification</b>
CE	Compliant with the relevant CE product directives
CHINA-ROHS	Below maximum concentration value
ISO 9001:2015	Designed, manufactured and/or distributed under this quality management system
REACH-SVHC	Compliant as per SVHC revision on <a href="http://www.commscope.com/ProductCompliance">www.commscope.com/ProductCompliance</a>
ROHS	Compliant
UK-ROHS	Compliant



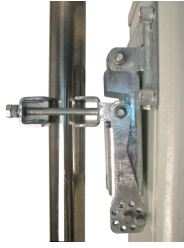
## Included Products

BSAMNT-3	–	Wide Profile Antenna Downtilt Mounting Kit for 2.4 - 4.5 in (60 - 115 mm) OD round members. Kit contains one scissor top bracket set and one bottom bracket set.
----------	---	--

## \* Footnotes

<b>Performance Note</b>	Severe environmental conditions may degrade optimum performance
-------------------------	---

# BSAMNT-3



Wide Profile Antenna Downtilt Mounting Kit for 2.4 - 4.5 in (60 - 115 mm) OD round members. Kit contains one scissor top bracket set and one bottom bracket set.

## Product Classification

**Product Type** Downtilt mounting kit

## General Specifications

**Application** Outdoor

**Color** Silver

## Dimensions

**Compatible Diameter, maximum** 115 mm | 4.528 in

**Compatible Diameter, minimum** 60 mm | 2.362 in

**Weight, net** 6.2 kg | 13.669 lb

## Material Specifications

**Material Type** Galvanized steel

## Packaging and Weights

**Included** Brackets | Hardware

**Packaging quantity** 1

**Weight, gross** 6.4 kg | 14.11 lb

## Regulatory Compliance/Certifications

Agency	Classification
CE	Compliant with the relevant CE product directives
CHINA-ROHS	Below maximum concentration value
ISO 9001:2015	Designed, manufactured and/or distributed under this quality management system
REACH-SVHC	Compliant as per SVHC revision on <a href="http://www.commscope.com/ProductCompliance">www.commscope.com/ProductCompliance</a>
ROHS	Compliant
UK-ROHS	Compliant

# BSAMNT-3

---

