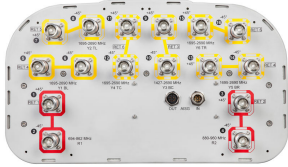


EGZV5-65D-R6



16-port sector antenna, 2x 694–862, 2x 880–960, 2x 1427–2690 and 10x 1695–2690 MHz, 65° HPBW, 6x RET

- All Internal RET actuators are connected in “Cascaded SRET” configuration
- Electrical tilt settings applicable to RF Ports R1, R2, Y3 & Y4 can be set independently (See Array Layout and RET Table below)
- A common electrical tilt setting is shared by RF Ports Y1/Y5 and Y2/Y6 for MIMO 4X4 purposes

This product will be discontinued on: December 31, 2025

General Specifications

| | |
|---|--|
| Antenna Type | Sector |
| Band | Multiband |
| Grounding Type | RF connector inner conductor and body grounded to reflector and mounting bracket |
| Performance Note | Outdoor usage Wind loading figures are validated by wind tunnel measurements described in white paper WP-112534-EN |
| Radome Material | Fiberglass, UV resistant |
| Radiator Material | Low loss circuit board |
| Reflector Material | Aluminum |
| RF Connector Interface | 4.3-10 Female |
| RF Connector Location | Bottom |
| RF Connector Quantity, high band | 12 |
| RF Connector Quantity, mid band | 0 |
| RF Connector Quantity, low band | 4 |
| RF Connector Quantity, total | 16 |

Remote Electrical Tilt (RET) Information

| | |
|--------------------------------|-----------------------------------|
| RET Hardware | CommRET v2 |
| RET Interface | 8-pin DIN Female 8-pin DIN Male |
| RET Interface, quantity | 1 female 1 male |
| Input Voltage | 10–30 Vdc |

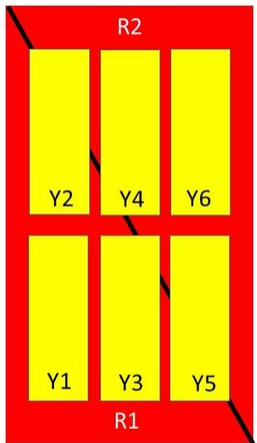
EGZV5-65D-R6

| | |
|--|------------------------------|
| Internal RET | High band (4) Low band (2) |
| Power Consumption, idle state, maximum | 1 W |
| Power Consumption, normal conditions, maximum | 8 W |
| Protocol | 3GPP/AISG 2.0 (Single RET) |

Dimensions

| | |
|---|----------------------|
| Width | 395 mm 15.551 in |
| Depth | 228 mm 8.976 in |
| Length | 2688 mm 105.827 in |
| Net Weight, without mounting kit | 46.9 kg 103.397 lb |

Array Layout



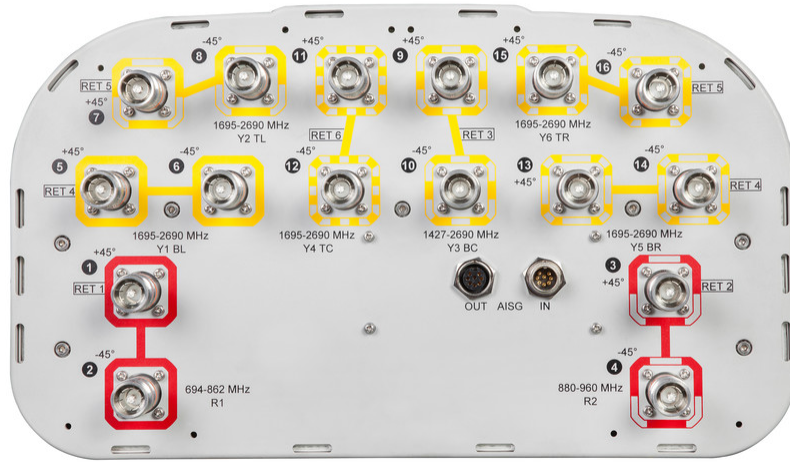
| Array | Freq (MHz) | Conns | RET (SRET) | AISG RET UID |
|-------|------------|-------|------------|----------------------|
| R1 | 694-862 | 1-2 | 1 | CPxxxxxxxxxxxxxxxxR1 |
| R2 | 880-960 | 3-4 | 2 | CPxxxxxxxxxxxxxxxxR2 |
| Y1 | 1695-2690 | 5-6 | 4 | CPxxxxxxxxxxxxxxxxY1 |
| Y5 | 1695-2690 | 13-14 | | |
| Y2 | 1695-2690 | 7-8 | 5 | CPxxxxxxxxxxxxxxxxY2 |
| Y6 | 1695-2690 | 15-16 | | |
| Y3 | 1427-2690 | 9-10 | | |
| Y4 | 1695-2690 | 11-12 | 6 | CPxxxxxxxxxxxxxxxxY4 |

Left Right
Bottom

(Sizes of colored boxes are not true depictions of array sizes)

Port Configuration

EGZV5-65D-R6



Electrical Specifications

| | |
|-----------------------------------|---|
| Impedance | 50 ohm |
| Operating Frequency Band | 1427 – 2690 MHz 1695 – 2690 MHz 694 – 862 MHz 880 – 960 MHz |
| Polarization | ±45° |
| Total Input Power, maximum | 1,000 W @ 50 °C |

Electrical Specifications

| | R1 | R2 | Y1-Y2/Y4-Y6 | | | | | Y3 |
|--|---------|---------|-------------|-----------|-----------|-----------|-----------|-----------|
| Frequency Band, MHz | 694–862 | 880–960 | 1695–1920 | 1920–2200 | 2300–2500 | 2500–2690 | 1427–1518 | 1695–2690 |
| Gain, dBi | 16.3 | 16.5 | 16.8 | 17.8 | 18.2 | 17.7 | 15.2 | 17.6 |
| Beamwidth, Horizontal, degrees | 65 | 64 | 68 | 63 | 59 | 61 | 69 | 60 |
| Beamwidth, Vertical, degrees | 8.5 | 7.4 | 7.2 | 6.4 | 5.7 | 5.3 | 9.3 | 6.7 |
| Beam Tilt, degrees | 2–12 | 2–12 | 2–12 | 2–12 | 2–12 | 2–12 | 2–12 | 2–12 |
| USLS (First Lobe), dB | 18 | 20 | 16 | 17 | 16 | 16 | 15 | 15 |
| Front-to-Back Ratio at 180°, dB | 34 | 31 | 32 | 35 | 34 | 31 | 33 | 34 |
| Isolation, Cross Polarization, dB | 27 | 27 | 27 | 27 | 27 | 27 | 25 | 25 |

EGZV5-65D-R6

| | | | | | | | | |
|---|------------|------------|------------|------------|------------|------------|------------|------------|
| Isolation, Inter-band, dB | 28 | 28 | 25 | 25 | 25 | 25 | 25 | 25 |
| VSWR Return loss, dB | 1.5 14.0 | 1.5 14.0 | 1.5 14.0 | 1.5 14.0 | 1.5 14.0 | 1.5 14.0 | 1.5 14.0 | 1.5 14.0 |
| PIM, 3rd Order, 2 x 20 W, dBc | -150 | -150 | -150 | -150 | -150 | -150 | -150 | -150 |
| Input Power per Port at 50°C, maximum, watts | 250 | 250 | 200 | 200 | 200 | 200 | 250 | 200 |

Mechanical Specifications

| | |
|---|---|
| Wind Loading @ Velocity, frontal | 574.0 N @ 150 km/h (129.0 lbf @ 150 km/h) |
| Wind Loading @ Velocity, lateral | 422.0 N @ 150 km/h (94.9 lbf @ 150 km/h) |
| Wind Loading @ Velocity, maximum | 981.0 N @ 150 km/h (220.5 lbf @ 150 km/h) |
| Wind Loading @ Velocity, rear | 590.0 N @ 150 km/h (132.6 lbf @ 150 km/h) |
| Wind Speed, maximum | 241 km/h (150 mph) |

Packaging and Weights

| | |
|-----------------------|----------------------|
| Width, packed | 505 mm 19.882 in |
| Depth, packed | 386 mm 15.197 in |
| Length, packed | 2821 mm 111.063 in |
| Weight, gross | 66 kg 145.505 lb |

Regulatory Compliance/Certifications

| Agency | Classification |
|---------------|--|
| CE | Compliant with the relevant CE product directives |
| CHINA-ROHS | Above maximum concentration value |
| ISO 9001:2015 | Designed, manufactured and/or distributed under this quality management system |
| ROHS | Compliant/Exempted |
| UK-ROHS | Compliant/Exempted |



Included Products

| | | |
|----------|---|--|
| BSAMNT-4 | - | Wide Profile Antenna Downtilt Mounting Kit for 2.4 - 4.5 in (60 - 115 mm) OD round members. Kit contains one scissor top bracket set and one bottom bracket set. |
|----------|---|--|

* Footnotes

| | |
|-------------------------|---|
| Performance Note | Severe environmental conditions may degrade optimum performance |
|-------------------------|---|