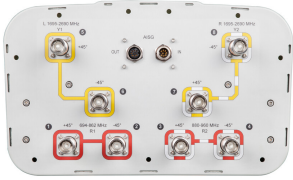


# EGVV65D-FL-C3-4XR



8-port sector antenna, 2x 694–862, 2x 880–960 and 4x 1695–2690 MHz, 65° HPBW, 4x RET. Low band arrays are diplexed at the element level.

- All Internal RET actuators are connected in “Cascaded SRET” configuration
- Uses the 4.3-10 connector which is 40 percent smaller than the 7-16 DIN connector

## OBSOLETE

This product was discontinued on: November 30, 2023

## General Specifications

<b>Antenna Type</b>	Sector
<b>Band</b>	Multiband
<b>Grounding Type</b>	RF connector inner conductor and body grounded to reflector and mounting bracket
<b>Performance Note</b>	Outdoor usage   Wind loading figures are validated by wind tunnel measurements described in white paper WP-112534-EN
<b>Radome Material</b>	Fiberglass, UV resistant
<b>Radiator Material</b>	Copper   Low loss circuit board
<b>Reflector Material</b>	Aluminum
<b>RF Connector Interface</b>	4.3-10 Female
<b>RF Connector Location</b>	Bottom
<b>RF Connector Quantity, high band</b>	4
<b>RF Connector Quantity, low band</b>	4
<b>RF Connector Quantity, total</b>	8

## Remote Electrical Tilt (RET) Information

<b>RET Interface</b>	8-pin DIN Female   8-pin DIN Male
<b>RET Interface, quantity</b>	1 female   1 male
<b>Input Voltage</b>	10–30 Vdc
<b>Internal RET</b>	High band (2)   Low band (2)
<b>Power Consumption, idle state, maximum</b>	2 W
<b>Power Consumption, normal conditions, maximum</b>	13 W

# EGVV65D-FL-C3-4XR

**Protocol** 3GPP/AISG 2.0 (Single RET)

## Dimensions

**Width** 350 mm | 13.78 in

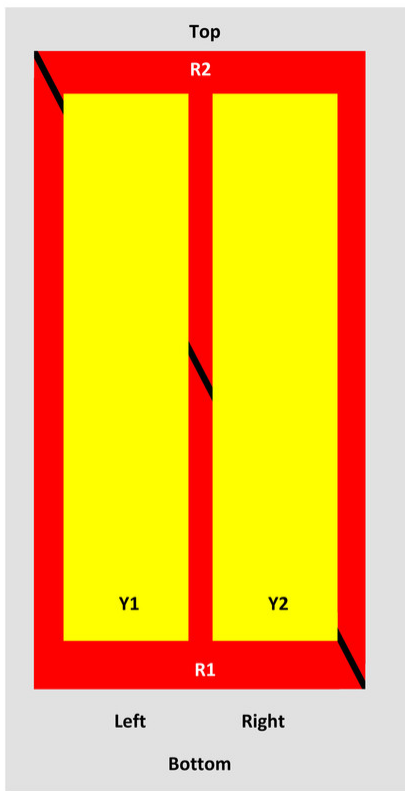
**Depth** 208 mm | 8.189 in

**Length** 2690 mm | 105.906 in

**Net Weight, without mounting kit** 39.6 kg | 87.303 lb

## Array Layout

EGVV65D-FL-C3-4XR



Array	Freq (MHz)	Conns	RET (SRET)	AISG RET UID
R1	694-862	1-2	1	ANXXXXXXXXXXXXX1
R2	880-960	3-4	2	ANXXXXXXXXXXXXX2
Y1	1695-2690	5-6	3	ANXXXXXXXXXXXXX3
Y2	1695-2690	7-8	4	ANXXXXXXXXXXXXX4

View from the front of the antenna

(Sizes of colored boxes are not true depictions of array sizes)

## Electrical Specifications

**Impedance** 50 ohm

**Operating Frequency Band** 1695 – 2690 MHz | 694 – 862 MHz | 880 – 960 MHz

# EGVV65D-FL-C3-4XR

<b>Polarization</b>	±45°
<b>Total Input Power, maximum</b>	800 W @ 50 °C

## Electrical Specifications

<b>Frequency Band, MHz</b>	<b>694–862</b>	<b>880–960</b>	<b>1695–1920</b>	<b>1920–2180</b>	<b>2300–2500</b>	<b>2500–2690</b>
<b>Gain, dBi</b>	16.5	16.9	18.1	18.5	18.4	18.5
<b>Beamwidth, Horizontal, degrees</b>	66	61	60	62	61	59
<b>Beamwidth, Vertical, degrees</b>	8.2	7.1	5.5	5	4.4	4.2
<b>Beam Tilt, degrees</b>	2–12	2–12	2–12	2–12	2–12	2–12
<b>USLS (First Lobe), dB</b>	17	19	18	19	18	19
<b>Front-to-Back Ratio at 180°, dB</b>	32	32	32	36	35	34
<b>Isolation, Cross Polarization, dB</b>	28	28	28	28	28	28
<b>Isolation, Inter-band, dB</b>	30	30	30	30	30	30
<b>VSWR   Return loss, dB</b>	1.5 14.0	1.5 14.0	1.5 14.0	1.5 14.0	1.5 14.0	1.5 14.0
<b>PIM, 3rd Order, 2 x 20 W, dBc</b>	-150	-150	-150	-150	-150	-150
<b>Input Power per Port at 50°C, maximum, watts</b>	200	200	250	250	250	200

## Electrical Specifications, BASTA

<b>Frequency Band, MHz</b>	<b>694–862</b>	<b>880–960</b>	<b>1695–1920</b>	<b>1920–2180</b>	<b>2300–2500</b>	<b>2500–2690</b>
<b>Gain by all Beam Tilts, average, dBi</b>	16.3	16.7	17.6	18.2	18.1	18.2
<b>Gain by all Beam Tilts Tolerance, dB</b>	±0.3	±0.3	±0.8	±0.5	±0.6	±0.6
<b>Gain by Beam Tilt, average, dBi</b>	2° 16.3 7° 16.4 12° 16.3	2° 16.8 7° 16.8 12° 16.4	2° 17.2 7° 17.7 12° 17.6	2° 17.7 7° 18.4 12° 18.3	2° 17.7 7° 18.3 12° 18.0	2° 17.7 7° 18.4 12° 18.1
<b>Beamwidth, Horizontal Tolerance, degrees</b>	±1.5	±2.3	±4.1	±4.3	±4.7	±3.6
<b>Beamwidth, Vertical Tolerance, degrees</b>	±0.7	±0.3	±0.4	±0.4	±0.3	±0.2
<b>USLS, beampeak to 20° above beampeak, dB</b>	16	19	15	17	15	15
<b>Front-to-Back Total Power at 180° ± 30°, dB</b>	25	24	26	29	28	28
<b>CPR at Boresight, dB</b>	20	20	19	21	22	18

# EGVV65D-FL-C3-4XR

<b>CPR at Sector, dB</b>	12	8	11	11	8	5
--------------------------	----	---	----	----	---	---

## Mechanical Specifications

<b>Wind Loading @ Velocity, frontal</b>	477.0 N @ 150 km/h (107.2 lbf @ 150 km/h)
<b>Wind Loading @ Velocity, lateral</b>	409.0 N @ 150 km/h (91.9 lbf @ 150 km/h)
<b>Wind Loading @ Velocity, maximum</b>	1,010.0 N @ 150 km/h (227.1 lbf @ 150 km/h)
<b>Wind Loading @ Velocity, rear</b>	506.0 N @ 150 km/h (113.8 lbf @ 150 km/h)
<b>Wind Speed, maximum</b>	241 km/h (150 mph)

## Packaging and Weights

<b>Width, packed</b>	460 mm   18.11 in
<b>Depth, packed</b>	350 mm   13.78 in
<b>Length, packed</b>	2830 mm   111.417 in
<b>Weight, gross</b>	55.7 kg   122.797 lb

## Regulatory Compliance/Certifications

<b>Agency</b>	<b>Classification</b>
CE	Compliant with the relevant CE product directives
CHINA-ROHS	Below maximum concentration value
ISO 9001:2015	Designed, manufactured and/or distributed under this quality management system
REACH-SVHC	Compliant as per SVHC revision on <a href="http://www.commscope.com/ProductCompliance">www.commscope.com/ProductCompliance</a>
ROHS	Compliant
UK-ROHS	Compliant



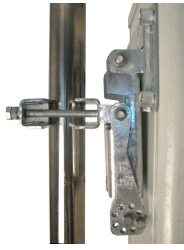
## Included Products

- BSAMNT-3 – Wide Profile Antenna Downtilt Mounting Kit for 2.4 - 4.5 in (60 - 115 mm) OD round members. Kit contains one scissor top bracket set and one bottom bracket set.

## \* Footnotes

**Performance Note** Severe environmental conditions may degrade optimum performance

# BSAMNT-3



Wide Profile Antenna Downtilt Mounting Kit for 2.4 - 4.5 in (60 - 115 mm) OD round members. Kit contains one scissor top bracket set and one bottom bracket set.

## Product Classification

**Product Type** Downtilt mounting kit

## General Specifications

**Application** Outdoor

**Color** Silver

## Dimensions

**Compatible Diameter, maximum** 115 mm | 4.528 in

**Compatible Diameter, minimum** 60 mm | 2.362 in

**Weight, net** 6.2 kg | 13.669 lb

## Material Specifications

**Material Type** Galvanized steel

## Packaging and Weights

**Included** Brackets | Hardware

**Packaging quantity** 1

**Weight, gross** 6.4 kg | 14.11 lb

## Regulatory Compliance/Certifications

Agency	Classification
CE	Compliant with the relevant CE product directives
CHINA-ROHS	Below maximum concentration value
ISO 9001:2015	Designed, manufactured and/or distributed under this quality management system
REACH-SVHC	Compliant as per SVHC revision on <a href="http://www.commscope.com/ProductCompliance">www.commscope.com/ProductCompliance</a>
ROHS	Compliant
UK-ROHS	Compliant

# BSAMNT-3

---

