

CNNPX310R-6P



6-port sector antenna, 2x 824–960 and 4x 1710–2170 MHz, 65° HPBW, 3x RET with manual override.

- Integrated Internal Remote Electrical Tilt (RET), with independent control of electrical tilt with manual override on all arrays

OBSOLETE

This product was discontinued on: November 30, 2023

Replaced By:

RVV-65D-R3VB

6-port sector antenna, 2x 694–960 and 4x 1695–2690 MHz, 65° HPBW, 3x RET

General Specifications

Antenna Type	Sector
Band	Multiband
Grounding Type	RF connector inner conductor and body grounded to reflector and mounting bracket
Performance Note	Outdoor usage
Radome Material	Polyester fiberglass pultrusion
RF Connector Interface	7-16 DIN Female
RF Connector Location	Bottom
RF Connector Quantity, high band	4
RF Connector Quantity, mid band	0
RF Connector Quantity, low band	2
RF Connector Quantity, total	6

Remote Electrical Tilt (RET) Information

RET Interface	8-pin DIN Male
RET Interface, quantity	1 male
Input Voltage	10–30 Vdc
Internal RET	High band (2) Low band (1)
Power Consumption, idle state, maximum	2 W
Power Consumption, normal conditions, maximum	13 W

CNNPX310R-6P

Protocol 3GPP/AISG 2.0 (Single RET)

Dimensions

Width 370 mm | 14.567 in

Depth 120 mm | 4.724 in

Length 2630 mm | 103.543 in

Net Weight, without mounting kit 36.5 kg | 80.469 lb

Electrical Specifications

Impedance 50 ohm

Operating Frequency Band 1710 – 2170 MHz | 824 – 960 MHz

Polarization ±45°

Electrical Specifications

Frequency Band, MHz	824–890	890–960	1710–1880	1920–2170
Gain, dBi	17	17.5	16.8	17.8
Beamwidth, Horizontal, degrees	67	62	68	63
Beamwidth, Vertical, degrees	7.5	7	7.2	6.5
Beam Tilt, degrees	0–10	0–10	0–10	0–10
USLS (First Lobe), dB	18	18	18	18
Front-to-Back Ratio at 180°, dB	25	25	25	25
Isolation, Cross Polarization, dB	30	30	30	30
VSWR Return loss, dB	1.43 15.0	1.43 15.0	1.43 15.0	1.43 15.0
PIM, 3rd Order, 2 x 20 W, dBc	-150	-150	-150	-150
Input Power per Port, maximum, watts	500	500	300	300

Mechanical Specifications

Wind Loading @ Velocity, maximum 1,430.0 N @ 160 km/h (321.5 lbf @ 160 km/h)

Wind Speed, maximum 200 km/h (124 mph)

Packaging and Weights

Width, packed 440 mm | 17.323 in

Depth, packed 216 mm | 8.504 in

Length, packed 2755 mm | 108.465 in

CNNPX310R-6P

Weight, gross

38.5 kg | 84.878 lb

Regulatory Compliance/Certifications

Agency	Classification
ISO 9001:2015	Designed, manufactured and/or distributed under this quality management system
REACH-SVHC	Compliant as per SVHC revision on www.commscope.com/ProductCompliance
ROHS	Compliant
UK-ROHS	Compliant

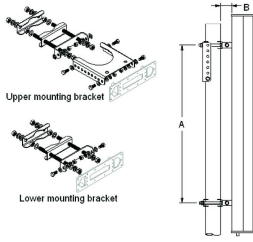
Included Products

T-029-GL-E	–	Adjustable Tilt Pipe Mounting Kit for 2.362"-4.5" (60-115mm) OD round members for panel antennas. Includes 2 clamp sets.
------------	---	--

* Footnotes

Performance Note Severe environmental conditions may degrade optimum performance

T-029-GL-E



Adjustable Tilt Pipe Mounting Kit for 2.362"-4.5" (60-115mm) OD round members for panel antennas. Includes 2 clamp sets.

Product Classification

Product Type Adjustable tilt mounting kit

General Specifications

Application Outdoor

Color Silver

Dimensions

Compatible Length, maximum 2850 mm | 112.205 in

Compatible Length, minimum 1500 mm | 59.055 in

Compatible Diameter, maximum 115 mm | 4.528 in

Compatible Diameter, minimum 60 mm | 2.362 in

Antenna-to-Pipe Distance 85 mm | 3.346 in

Bracket-to-Bracket Distance 1400 mm | 55.118 in

Weight, net 6 kg | 13.228 lb

Material Specifications

Material Type Galvanized steel

Mechanical Specifications

Mechanical Tilt 0°-8°

Packaging and Weights

Included Brackets | Hardware

Packaging quantity 1

Regulatory Compliance/Certifications

Agency	Classification
CE	Compliant with the relevant CE product directives

T-029-GL-E

CHINA-ROHS	Below maximum concentration value
ISO 9001:2015	Designed, manufactured and/or distributed under this quality management system
REACH-SVHC	Compliant as per SVHC revision on www.commscope.com/ProductCompliance
ROHS	Compliant
UK-ROHS	Compliant

