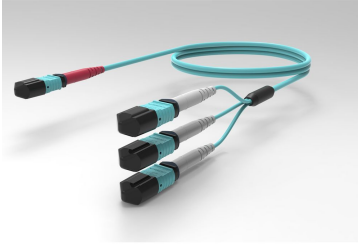


# UQX2PQPHF

## Base Product



Ultra Low Loss OM4, MPO24 (Unpinned) to MPO8 QSFP (Unpinned), Fiber Extension Cable Assembly, 24-Fiber, Plenum

## Product Classification

<b>Regional Availability</b>	Australia/New Zealand   Europe   Latin America   Middle East/Africa   North America
<b>Portfolio</b>	CommScope®
<b>Product Type</b>	Fiber array cable assembly
<b>Product Brand</b>	SYSTIMAX ULL
<b>Ordering Note</b>	For additional jacket colors, please contact a CommScope Sales Representative   For lengths greater than 999 ft (304 m), orders must be in meters   Minimum length may vary based on cable configuration

## General Specifications

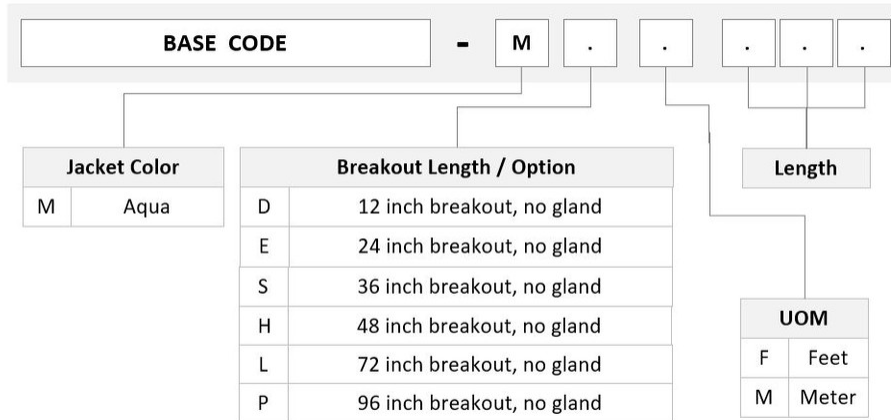
<b>Color, boot A</b>	Red
<b>Color, connector A</b>	Aqua
<b>Color, boot B</b>	Gray
<b>Color, connector B</b>	Aqua
<b>Construction Type</b>	Stranded
<b>Furcation Color</b>	Aqua
<b>Interface, Connector A</b>	MPO-24/UPC Female
<b>Interface, Connector B</b>	MPO-08/UPC Female
<b>Interface Feature, connector B</b>	QSFP configuration
<b>Jacket Color</b>	Aqua
<b>Polarity</b>	Method B Enhanced (ULL)
<b>Total Fibers, quantity</b>	24

## Dimensions

# UQX2PQPHF

<b>Cable Assembly Length Range (m)</b>	3 – 999
<b>Cable Assembly Length Range (ft)</b>	10 – 999

## Ordering Tree



## Mechanical Specifications

<b>Cable Retention Strength, maximum</b>	11.24 lb @ 0 °   4.40 lb @ 90 °
--	---------------------------------

## Optical Specifications

<b>Fiber Mode</b>	Multimode
<b>Fiber Type</b>	OM4, LazrSPEED®

## Environmental Specifications

<b>Operating Temperature</b>	-10 °C to +60 °C (+14 °F to +140 °F)
<b>Environmental Space</b>	Indoor   Plenum

## Regulatory Compliance/Certifications

Agency	Classification
ISO 9001:2015	Designed, manufactured and/or distributed under this quality management system

## Included Products

760161901	-	Fiber indoor cable, LazrSPEED® Plenum MPO Light Duty for Patchcords, 24 fiber, Multimode
P-024-MP-5K-F36AQ	-	OM4, Feet jacket marking, Aqua jacket color
860366210	-	MPO12, ULTRA LOW LOSS, FEMALE, OM3/4, AQUA, 3mm

# UQX2PQPHF

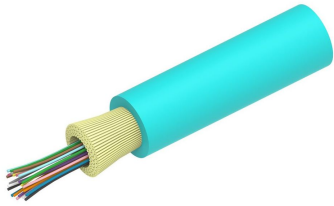
---

860634624

- LazrSPEED® Elite MPO Female 24 Fiber Connector, lime green

# 760161901 | P-024-MP-5K-F36AQ

---



Fiber indoor cable, LazrSPEED® Plenum MPO Light Duty for Patchcords, 24 fiber, Multimode OM4, Feet jacket marking, Aqua jacket color

## Product Classification

<b>Regional Availability</b>	Asia   Australia/New Zealand   Latin America   Middle East/Africa   North America
<b>Portfolio</b>	CommScope®
<b>Product Type</b>	Fiber indoor cable
<b>Product Series</b>	P-MP

## General Specifications

<b>Cable Type</b>	MPO trunk cable
<b>Construction Type</b>	Non-armored
<b>Subunit Type</b>	Gel-free
<b>Jacket Color</b>	Aqua
<b>Jacket Marking</b>	Feet
<b>Total Fiber Count</b>	24

## Dimensions

<b>Diameter Over Jacket</b>	3.6 mm   0.142 in
-----------------------------	-------------------

## Representative Image



## Mechanical Specifications

<b>Minimum Bend Radius, loaded</b>	54 mm   2.126 in
<b>Minimum Bend Radius, unloaded</b>	29 mm   1.142 in
<b>Tensile Load, long term, maximum</b>	120 N   26.977 lbf
<b>Tensile Load, short term, maximum</b>	400 N   89.924 lbf
<b>Compression</b>	4 N/mm   22.841 lb/in
<b>Compression Test Method</b>	FOTP-41   IEC 60794-1 E3
<b>Flex</b>	300 cycles
<b>Flex Test Method</b>	FOTP-104   IEC 60794-1 E6
<b>Impact</b>	0.74 N-m   6.55 in lb
<b>Impact Test Method</b>	FOTP-25   IEC 60794-1 E4
<b>Strain</b>	See long and short term tensile loads
<b>Strain Test Method</b>	FOTP-33   IEC 60794-1 E1
<b>Twist</b>	10 cycles
<b>Twist Test Method</b>	FOTP-85   IEC 60794-1 E7
<b>Vertical Rise, maximum</b>	500 m   1,640.42 ft

## Optical Specifications

<b>Fiber Type</b>	OM4, LazrSPEED® 550   OM4, LazrSPEED® 550
-------------------	---

## Environmental Specifications

<b>Installation temperature</b>	0 °C to +70 °C (+32 °F to +158 °F)
<b>Operating Temperature</b>	0 °C to +70 °C (+32 °F to +158 °F)

# 760161901 | P-024-MP-5K-F36AQ

<b>Storage Temperature</b>	-40 °C to +70 °C (-40 °F to +158 °F)
<b>Cable Qualification Standards</b>	ANSI/ICEA S-83-596   Telcordia GR-409
<b>Environmental Space</b>	Plenum
<b>Flame Test Listing</b>	NEC OFNP (ETL) and c(ETL)
<b>Flame Test Method</b>	NFPA 130   NFPA 262

## Environmental Test Specifications

<b>Heat Age</b>	0 °C to +85 °C (+32 °F to +185 °F)
<b>Heat Age Test Method</b>	IEC 60794-1 F9
<b>Low High Bend</b>	0 °C to +70 °C (+32 °F to +158 °F)
<b>Low High Bend Test Method</b>	FOTP-37   IEC 60794-1 E11
<b>Temperature Cycle</b>	0 °C to +70 °C (+32 °F to +158 °F)
<b>Temperature Cycle Test Method</b>	FOTP-3   IEC 60794-1 F1

## Packaging and Weights

<b>Cable weight</b>	12 kg/km   8.064 lb/kft
---------------------	-------------------------

## Regulatory Compliance/Certifications

<b>Agency</b>	<b>Classification</b>
CHINA-ROHS	Below maximum concentration value
ISO 9001:2015	Designed, manufactured and/or distributed under this quality management system
REACH-SVHC	Compliant as per SVHC revision on <a href="http://www.commscope.com/ProductCompliance">www.commscope.com/ProductCompliance</a>
ROHS	Compliant
UK-ROHS	Compliant



## \* Footnotes

**Operating Temperature** Specification applicable to non-terminated bulk fiber cable

# 860366210

---



MPO12, ULTRA LOW LOSS, FEMALE, OM3/4, AQUA, 3mm

## Product Classification

<b>Regional Availability</b>	Asia   Australia/New Zealand   EMEA   Latin America   North America
<b>Portfolio</b>	CommScope®
<b>Product Type</b>	Fiber connector
<b>Product Brand</b>	LazrSPEED®

## General Specifications

<b>Color</b>	Aqua
<b>Color, boot</b>	Black
<b>Ferrule Geometry</b>	Flat
<b>Interface</b>	MPO/UPC Female
<b>Interface Feature</b>	Unpinned
<b>Total Fiber Count</b>	12

## Dimensions

<b>Length</b>	60.1 mm   2.366 in
<b>Compatible Cable Diameter</b>	3 mm   0.118 in

## Material Specifications

<b>Ferrule Material</b>	Polymer
-------------------------	---------

## Mechanical Specifications

<b>Cable Retention Strength, maximum</b>	11.24 lb @ 0 °
--	----------------

## Optical Specifications

<b>Fiber Mode</b>	Multimode
<b>Fiber Type</b>	OM3   OM4
<b>Insertion Loss Change, mating</b>	0.3 dB

# 860366210

---

<b>Optical Components Standard</b>	ANSI/TIA-568-C.3
<b>Insertion Loss Change, temperature</b>	0.3 dB
<b>Insertion Loss, maximum</b>	0.2 dB
<b>Return Loss, minimum</b>	27 dB

## Packaging and Weights

<b>Packaging quantity</b>	1
---------------------------	---

## Regulatory Compliance/Certifications

<b>Agency</b>	<b>Classification</b>
CHINA-ROHS	Below maximum concentration value
ISO 9001:2015	Designed, manufactured and/or distributed under this quality management system
REACH-SVHC	Compliant as per SVHC revision on <a href="http://www.commscope.com/ProductCompliance">www.commscope.com/ProductCompliance</a>
ROHS	Compliant
UK-ROHS	Compliant

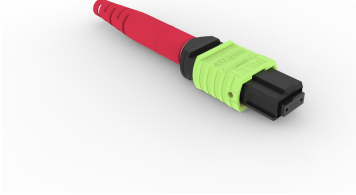


## \* Footnotes

<b>Insertion Loss Change, mating</b>	TIA-568: Maximum insertion loss change after 500 matings
<b>Insertion Loss Change, temperature</b>	Maximum insertion loss change from -10 °C to +60 °C (+14 °F to +140 °F)



## LazrSPEED® Elite MPO Female 24 Fiber Connector, lime green



### Product Classification

<b>Regional Availability</b>	Asia   Australia/New Zealand   EMEA   Latin America   North America
<b>Portfolio</b>	CommScope®
<b>Product Type</b>	Fiber connector
<b>Product Brand</b>	LazrSPEED®

### General Specifications

<b>Color</b>	Lime green
<b>Color, boot</b>	Red
<b>Ferrule Geometry</b>	Flat
<b>Interface</b>	MPO/UPC Female
<b>Interface Feature</b>	Unpinned
<b>Total Fiber Count</b>	24

### Dimensions

<b>Length</b>	60.1 mm   2.366 in
<b>Compatible Cable Diameter</b>	3 mm   0.118 in

### Material Specifications

<b>Ferrule Material</b>	Polymer
-------------------------	---------

### Mechanical Specifications

<b>Cable Retention Strength, maximum</b>	11.24 lb @ 0 °
--	----------------

### Optical Specifications

<b>Fiber Mode</b>	Multimode
<b>Fiber Type</b>	OM5, LazrSPEED® wideband
<b>Insertion Loss Change, mating</b>	0.3 dB

# 860634624

---

<b>Optical Components Standard</b>	ANSI/TIA-568-C.3
<b>Insertion Loss Change, temperature</b>	0.3 dB
<b>Insertion Loss, maximum</b>	0.27 dB
<b>Insertion Loss, ULL, maximum</b>	0.2 dB
<b>Return Loss, minimum</b>	27 dB

## Packaging and Weights

<b>Packaging quantity</b>	1
---------------------------	---

## Regulatory Compliance/Certifications

<b>Agency</b>	<b>Classification</b>
CHINA-ROHS	Above maximum concentration value
ISO 9001:2015	Designed, manufactured and/or distributed under this quality management system
REACH-SVHC	Compliant as per SVHC revision on <a href="http://www.commscope.com/ProductCompliance">www.commscope.com/ProductCompliance</a>
ROHS	Compliant/Exempted
UK-ROHS	Compliant/Exempted



## \* Footnotes

<b>Insertion Loss Change, mating</b>	TIA-568: Maximum insertion loss change after 500 matings
<b>Insertion Loss Change, temperature</b>	Maximum insertion loss change from -10 °C to +60 °C (+14 °F to +140 °F)