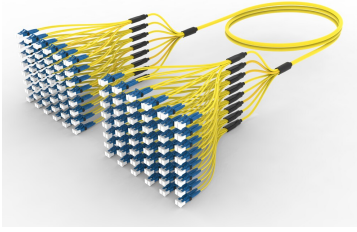


UNGLFLFCL

Base Product



Ultra Low Loss ULL TeraSPEED® LC/UPC G B to LC/UPC G B
Ruggedized fanout Cable, 96-Fiber, LSZH, 12 fiber PmP 2.0 mm Dca

Product Classification

Regional Availability

Asia | Australia/New Zealand | Europe | Latin America | Middle East/Africa | North America

Portfolio

CommScope®

Product Type

Ruggedized fanout

Product Brand

SYSTIMAX ULL

Ordering Note

For additional jacket colors, please contact a CommScope Sales Representative | For lengths greater than 999 ft (304 m), orders must be in meters | Minimum length may vary based on cable configuration

General Specifications

Color, boot A

Blue

Color, connector A

Blue

Color, boot B

Blue

Color, connector B

Blue

Construction Type

Stranded

Furcation Color

Yellow

Interface, Connector A

LC/UPC

Interface Feature, connector A

Grade B performance

Interface, Connector B

LC/UPC

Interface Feature, connector B

Grade B performance

Jacket Color

Yellow

Fibers per Subunit, quantity

12

Total Fibers, quantity

96

Dimensions

Cable Assembly Length Range (m)

3 – 305

UNGLFLFCL

Cable Assembly Length Range (ft)

10 – 999

Ordering Tree



Optical Specifications

Fiber Mode

Singlemode

Fiber Type

G.657.A2, TeraSPEED®

Environmental Specifications

Operating Temperature

-10 °C to +60 °C (+14 °F to +140 °F)

EN50575 CPR Cable EuroClass Fire Performance

Dca

Environmental Space

Dual Rated LSZH/Riser | Indoor

Regulatory Compliance/Certifications

Agency

Classification

ANATEL

Compliant

CHINA-ROHS

Below maximum concentration value

UNGLFLFCL

ISO 9001:2015	Designed, manufactured and/or distributed under this quality management system
REACH-SVHC	Compliant as per SVHC revision on www.commscope.com/ProductCompliance
ROHS	Compliant
UK-ROHS	Compliant



Included Products

760242312 N-096-MP-8G-F12YL/20T/D	-	Fiber indoor cable, Low Smoke Zero Halogen Riser MPO Trunk, 96 fiber multi-unit with 12 fiber 2.0mm subunits, Gel-free, Singlemode G.657.A2/B2, Feet jacket marking, Yellow jacket color, Dca flame rating
--------------------------------------	---	--