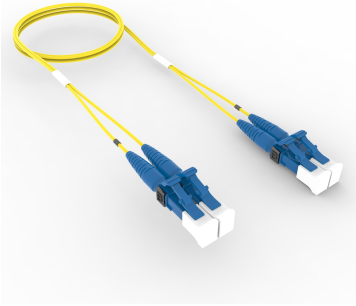


# UDGLCLC42

---



Ultra Low Loss Singlemode, LC/UPC to LC/UPC, Fiber Patch Cord, 1.6 mm Duplex, Plenum

## Product Classification

|                              |  |
|------------------------------|--|
| <b>Regional Availability</b> | Asia   Australia/New Zealand   China   Europe   India   Latin America   Middle East/Africa   North America               |
| <b>Portfolio</b>             | CommScope®   |
| <b>Product Type</b>          | Fiber patch cord, duplex   |
| <b>Product Brand</b>         | SYSTIMAX ULL   |
| <b>Ordering Note</b>         | For lengths greater than 999 ft (304 m), orders must be in meters   Minimum length may vary based on cable configuration |

## General Specifications

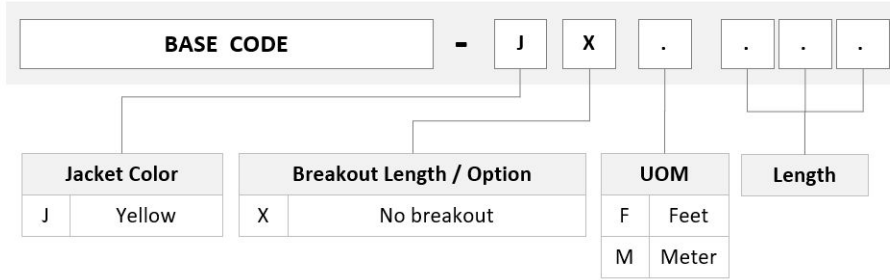
|                               |                |
|-------------------------------|----------------|
| <b>Color, boot A</b>          | Blue           |
| <b>Color, connector A</b>     | Blue           |
| <b>Color, boot B</b>          | Blue           |
| <b>Color, connector B</b>     | Blue           |
| <b>Interface, Connector A</b> | LC/UPC         |
| <b>Interface, Connector B</b> | LC/UPC         |
| <b>Jacket Color</b>           | Yellow         |
| <b>Polarity</b>               | Pairs, flipped |
| <b>Total Fibers, quantity</b> | 2              |

## Dimensions

|   |                   |
|---|-------------------|
| <b>Cable Assembly Length Range (m)</b>  | 1 – 999           |
| <b>Cable Assembly Length Range (ft)</b> | 1 – 999           |
| <b>Diameter Over Jacket</b>             | 1.6 mm   0.063 in |

## Ordering Tree

# UDGLCLC42



## Mechanical Specifications

**Cable Retention Strength, maximum** 11.24 lb @ 0 ° | 4.40 lb @ 90 °

## Optical Specifications

**Fiber Mode** Singlemode

**Fiber Type** G.657.A2, TeraSPEED®

## Environmental Specifications

**Operating Temperature** -10 °C to +60 °C (+14 °F to +140 °F)

**Environmental Space** Plenum

## Packaging and Weights

**Packaging quantity** 1

## Regulatory Compliance/Certifications

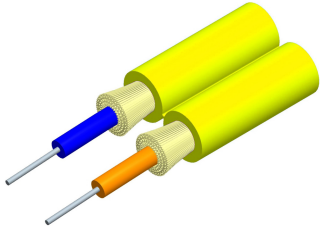
| Agency        | Classification   |
|---------------|--|
| CHINA-ROHS    | Above maximum concentration value  |
| ISO 9001:2015 | Designed, manufactured and/or distributed under this quality management system |
| ROHS          | Compliant/Exempted   |
| UK-ROHS       | Compliant/Exempted   |



## Included Products

- 760238069 P-002-ZC-8G-F16YL – Fiber indoor cable, 1.6 mm diameter, Plenum rated, Zipcord 2-fiber, Singlemode G.657.A2/B2, Feet jacket marking, Yellow jacket color
- 860655464 – LC/UPC Connector, Singlemode, Blue





Fiber indoor cable, 1.6 mm diameter, Plenum rated, Zipcord 2-fiber, Singlemode G.657.A2/B2, Feet jacket marking, Yellow jacket color

## Product Classification

|                              |   |
|------------------------------|---|
| <b>Regional Availability</b> | Asia   Australia/New Zealand   Latin America   Middle East/Africa   North America |
| <b>Portfolio</b>             | CommScope®  |
| <b>Product Type</b>          | Fiber indoor cable  |
| <b>Product Series</b>        | P-ZC  |

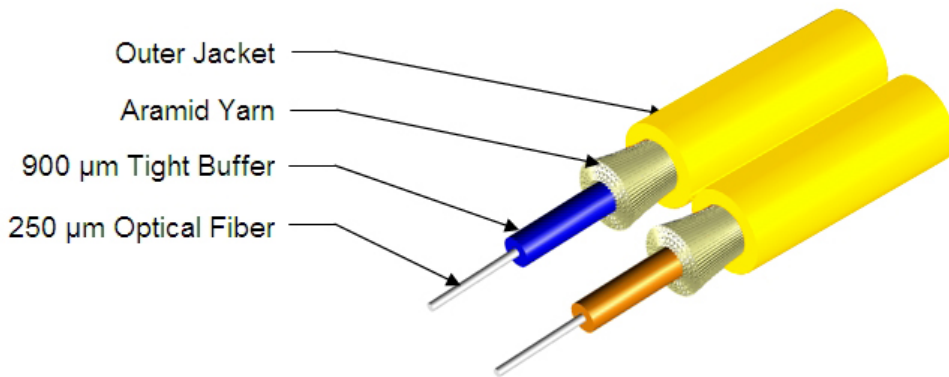
## General Specifications

|                          |             |
|--------------------------|-------------|
| <b>Cable Type</b>        | Cordage     |
| <b>Construction Type</b> | Non-armored |
| <b>Subunit Type</b>      | Gel-free    |
| <b>Jacket Color</b>      | Yellow      |
| <b>Jacket Marking</b>    | Feet        |
| <b>Total Fiber Count</b> | 2           |

## Dimensions

|                           |                   |
|---------------------------|-------------------|
| <b>Height Over Jacket</b> | 1.7 mm   0.067 in |
| <b>Width Over Jacket</b>  | 3.5 mm   0.138 in |

## Representative Image



## Mechanical Specifications

|  |                                       |
|--|---------------------------------------|
| <b>Minimum Bend Radius, loaded</b>       | 38 mm   1.496 in                      |
| <b>Minimum Bend Radius, unloaded</b>     | 15 mm   0.591 in                      |
| <b>Tensile Load, long term, maximum</b>  | 53 N   11.915 lbf                     |
| <b>Tensile Load, short term, maximum</b> | 178 N   40.016 lbf                    |
| <b>Compression</b>                       | 10 N/mm   57.101 lb/in                |
| <b>Compression Test Method</b>           | FOTP-41   IEC 60794-1 E3              |
| <b>Flex</b>                              | 300 cycles                            |
| <b>Flex Test Method</b>                  | FOTP-104   IEC 60794-1 E6             |
| <b>Impact</b>                            | 0.74 N-m   6.55 in lb                 |
| <b>Impact Test Method</b>                | FOTP-25   IEC 60794-1 E4              |
| <b>Strain</b>                            | See long and short term tensile loads |
| <b>Strain Test Method</b>                | FOTP-33   IEC 60794-1 E1              |
| <b>Twist</b>                             | 10 cycles                             |
| <b>Twist Test Method</b>                 | FOTP-85   IEC 60794-1 E7              |
| <b>Vertical Rise, maximum</b>            | 500 m   1,640.42 ft                   |

## Optical Specifications

|                   |                           |
|-------------------|---------------------------|
| <b>Fiber Type</b> | G.657.A2/B2   G.657.A2/B2 |
|-------------------|---------------------------|

## Environmental Specifications

|                                 |                                    |
|---------------------------------|------------------------------------|
| <b>Installation temperature</b> | 0 °C to +70 °C (+32 °F to +158 °F) |
|---------------------------------|------------------------------------|

# 760238069 | P-002-ZC-8G-F16YL

|                                      |                                       |
|--------------------------------------|---------------------------------------|
| <b>Operating Temperature</b>         | -20 °C to +70 °C (-4 °F to +158 °F)   |
| <b>Storage Temperature</b>           | -40 °C to +70 °C (-40 °F to +158 °F)  |
| <b>Cable Qualification Standards</b> | ANSI/ICEA S-83-596   Telcordia GR-409 |
| <b>Environmental Space</b>           | Plenum                                |
| <b>Flame Test Listing</b>            | NEC OFNP (ETL) and c(ETL)             |
| <b>Flame Test Method</b>             | NFPA 130   NFPA 262                   |

## Environmental Test Specifications

|                                      |                                     |
|--------------------------------------|-------------------------------------|
| <b>Heat Age</b>                      | -20 °C to +85 °C (-4 °F to +185 °F) |
| <b>Heat Age Test Method</b>          | IEC 60794-1 F9                      |
| <b>Low High Bend</b>                 | -20 °C to +70 °C (-4 °F to +158 °F) |
| <b>Low High Bend Test Method</b>     | FOTP-37   IEC 60794-1 E11           |
| <b>Temperature Cycle</b>             | -20 °C to +70 °C (-4 °F to +158 °F) |
| <b>Temperature Cycle Test Method</b> | FOTP-3   IEC 60794-1 F1             |

## Packaging and Weights

|                     |                        |
|---------------------|------------------------|
| <b>Cable weight</b> | 6 kg/km   4.032 lb/kft |
|---------------------|------------------------|

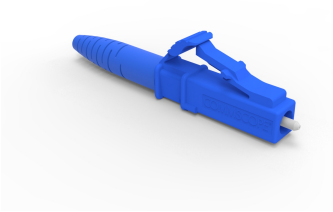
## Regulatory Compliance/Certifications

| <b>Agency</b> | <b>Classification</b>  |
|---------------|--|
| CHINA-ROHS    | Below maximum concentration value  |
| ISO 9001:2015 | Designed, manufactured and/or distributed under this quality management system   |
| REACH-SVHC    | Compliant as per SVHC revision on <a href="http://www.commscope.com/ProductCompliance">www.commscope.com/ProductCompliance</a> |
| ROHS          | Compliant  |
| UK-ROHS       | Compliant  |



## \* Footnotes

**Operating Temperature** Specification applicable to non-terminated bulk fiber cable



## LC/UPC Connector, Singlemode, Blue

### Product Classification

|                              |   |
|------------------------------|---|
| <b>Regional Availability</b> | Asia   Australia/New Zealand   EMEA   Latin America   North America |
| <b>Portfolio</b>             | CommScope®  |
| <b>Product Type</b>          | Fiber connector   |

### General Specifications

|                       |        |
|-----------------------|--------|
| <b>Color, boot</b>    | Blue   |
| <b>Color, housing</b> | Blue   |
| <b>Interface</b>      | LC/UPC |

### Dimensions

|                                  |                                     |
|----------------------------------|-------------------------------------|
| <b>Length</b>                    | 41.6 mm   1.638 in                  |
| <b>Compatible Cable Diameter</b> | 1.6 mm   0.063 in   2 mm   0.079 in |
| <b>Dimensional Standards</b>     | IEC 61754-20   TIA-604-10           |

### Material Specifications

|                         |          |
|-------------------------|----------|
| <b>Ferrule Material</b> | Zirconia |
|-------------------------|----------|

### Mechanical Specifications

|  |                |
|--|----------------|
| <b>Cable Retention Strength, maximum</b> | 11.24 lb @ 0 ° |
|--|----------------|

### Optical Specifications

|   |                                 |
|---|---------------------------------|
| <b>Fiber Mode</b>                         | Singlemode                      |
| <b>Insertion Loss Change, mating</b>      | 0.2 dB                          |
| <b>Optical Components Standard</b>        | ANSI/TIA-568. 3-D   IEC 61753-1 |
| <b>Insertion Loss Change, temperature</b> | 0.2 dB                          |
| <b>Insertion Loss, ULL, maximum</b>       | 0.25 dB                         |
| <b>Return Loss, minimum</b>               | 55 dB                           |

## \* Footnotes

**Insertion Loss Change, mating** TIA-568: Maximum insertion loss change after 500 matings

**Insertion Loss Change, temperature** Maximum insertion loss change from -10 °C to +60 °C (+14 °F to +140 °F)