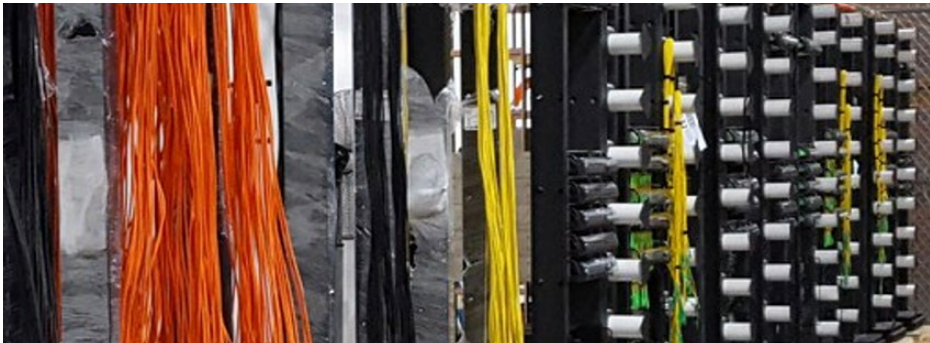


Service Summary

- Time-to-market
- Reduced disruption
- Reduced cost
- Improved quality

Rack and Roll

For network migration and implementation
Professional Services



Services Overview

With pressures to add capacity and increase quality of service – while maintaining business as usual (BAU)—network operators need innovative solutions. Commscope’s Rack and Roll Methodology offers operators a way to implement new architectures and new equipment in their networks with reduced costs, improved standardization and quality, reduced lead times, reduced waste and minimal disruption to ongoing operations.

The keys to a successful Rack and Roll engagement are careful planning and design up front, offsite construction (or “racking”) where “production-line” techniques can be efficiently applied to each module, rack or system built and timely delivery (“rolling”) to the site where the new elements can be integrated into the operator’s site by a special crew dedicated to getting the system up and running quickly.

Rack and Roll Methodology for Network Migration and Implementation Projects

Operator Challenges

Increasing bandwidth demands and competitive markets are driving network operators to continue to innovate their service delivery networks—to add capacity and improve quality. The end game is retaining and gaining satisfied customers. This requires new equipment and often, entirely new architectures.

For most operators, data center, central office, headend or hub space is limited—if not already over-capacity. Internal staff is fully utilized on BAU activities. But, new solutions need to be installed and operational as quickly as possible—to reap the efficiencies and improved service benefits they offer.

Rack and Roll Methodology

CommScope's Rack and Roll services embrace a methodology in which a solution is planned, built off-site and then delivered and integrated into the operator's existing system. It calls on a wide array of professional services disciplines and leverages CommScope experience implementing over tens of thousands of critical network elements into cable, telco and hyperscaler networks.

PLANNING

- Technology consulting
- Survey and audit
- Engineering and design
- Detailed designs
- Material planning

RACKING

- Rack, stack and wire
- Cable management
- Material logistics
- Testing
- Quality control
- Custom packing

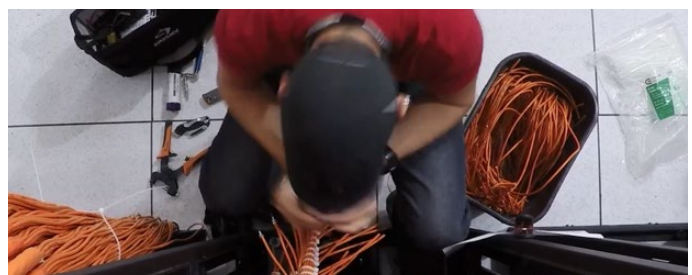


ROLLING

- Insured and protected shipment
- Move-in
- Intra-bay and site connections
- Testing
- Quality control
- Commissioning and migration

The value of the Rack and Roll Methodology comes from the concept of prefabrication. Prefabrication is the process of assembling racks, hardware, and wiring to a nearly-complete state offsite to deliver later to the project site for installation and integration into the operator's site. Designing which components go into each rack requires attention to not only the ease of construction but also the lifetime serviceability of the system and the power consumption and heat dissipation requirements of each element and rack.

The Rack and Roll methodology can be applied to any technology or deployment scenario.



Rack and Roll Methodology Benefits

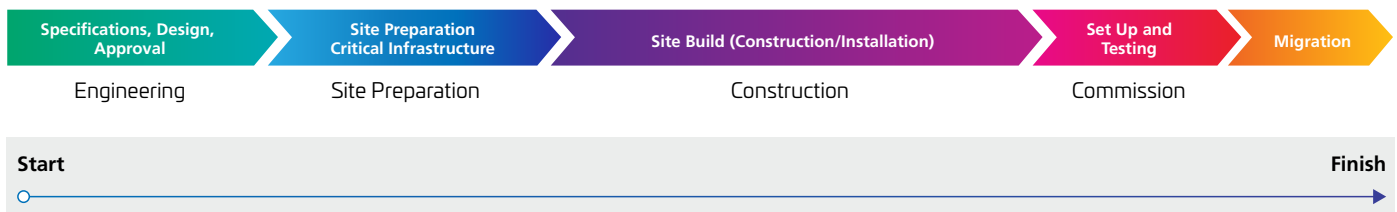
The primary advantage of the Rack and Roll approach is increased productivity, especially when project schedules are tight, and skilled labor is scarce. Other advantages include enhanced, simplified, onsite logistics, less risk of theft and vandalism (from multiple people in and out of the site). Prefabrication helps decrease material waste, reduces costs due to change orders and creates less disruption to ongoing operations. The bottom line is time savings and, as shown in the figure below, the typical Rack and Roll build can result in a 30% time savings, compared to traditional onsite build techniques.



Benefits

- Reduced construction cycle time
- Standard and consistent quality
- Predictive costs and predictive schedule
- Factory commissioning reduces punch list items
- Less skilled labor required at work site
- Reduced safety risk at site
- Reduction of material waste at site
- Reduced overall construction costs

Traditional Onsite Build



Rack and Roll Build



Typical Time Savings of Prefabricated CommScope Rack and Roll vs. Conventional Onsite Builds

Customer Care

Contact Customer Care for product information and sales:

United States: 866-36-CommScope | International: +1-678-473-5656

CommScope pushes the boundaries of communications technology with game-changing ideas and ground-breaking discoveries that spark profound human achievement. We collaborate with our customers and partners to design, create and build the world's most advanced networks. It is our passion and commitment to identify the next opportunity and realize a better tomorrow. Discover more at commscope.com

COMMSCOPE®

commscope.com

Visit our website or contact your local CommScope representative for more information.

© 2020 CommScope, Inc. All rights reserved.

Unless otherwise noted, all trademarks identified by ® or ™ are registered trademarks or trademarks, respectively, of CommScope, Inc. This document is for planning purposes only and is not intended to modify or supplement any specifications or warranties relating to CommScope products or services. CommScope is committed to the highest standards of business integrity and environmental sustainability, with a number of CommScope's facilities across the globe certified in accordance with international standards, including ISO 9001, TL 9000, and ISO 14001. Further information regarding CommScope's commitment can be found at www.commscope.com/corporate-responsibility-and-sustainability.

PA-114811-EN (07/20)