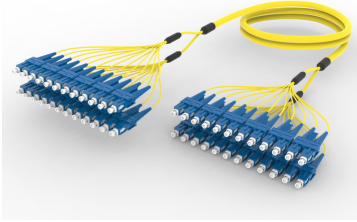


F4WSCSCAF

Base Product



Singlemode SC/UPC to SC/UPC 24-Fiber InstaPATCH® 360 Ruggedized Fanout Cable, Low Smoke Zero Halogen

OBSOLETE

This product was discontinued on: October 7, 2024

Product Classification

Regional Availability	Europe Middle East/Africa
Portfolio	CommScope®
Product Type	Ruggedized fanout
Product Brand	SYSTIMAX InstaPATCH® 360
Ordering Note	For lengths greater than 999 ft (304 m), orders must be in meters Minimum length may vary based on cable configuration Not available in the United States or Canada

General Specifications

Color, boot A	Blue
Color, connector A	Blue
Color, boot B	Blue
Color, connector B	Blue
Construction Type	Stranded
Furcation Color	Yellow
Interface, Connector A	SC/UPC
Interface, Connector B	SC/UPC
Jacket Color	Yellow
Fibers per Subunit, quantity	12
Total Fibers, quantity	24

Dimensions

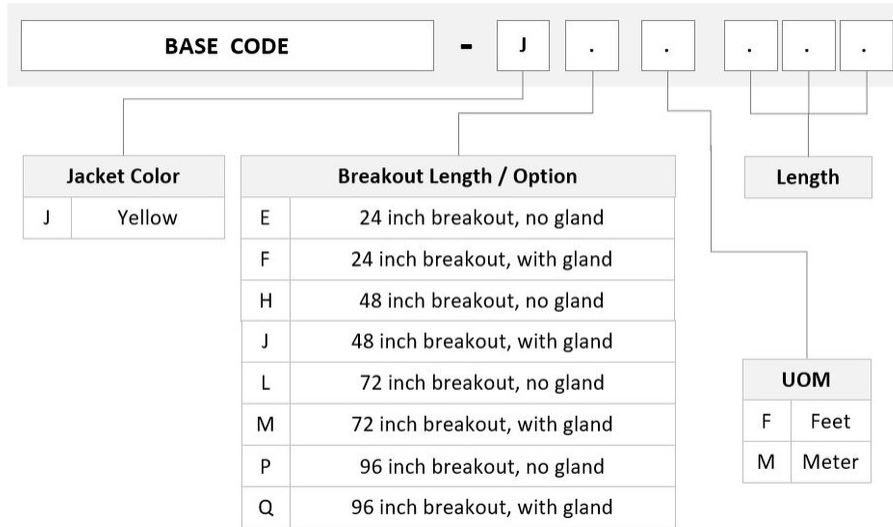
Cable Assembly Length Range (m)	3 – 305
--	---------

F4WSCSCAF

Cable Assembly Length Range (ft)

8 – 999

Ordering Tree



Mechanical Specifications

Cable Retention Strength, maximum 11.24 lb @ 0° | 4.40 lb @ 90°

Optical Specifications

Fiber Mode Singlemode

Fiber Type G.652.D | G.657.A1, TeraSPEED®

Environmental Specifications

Operating Temperature -10 °C to +60 °C (+14 °F to +140 °F)

Environmental Space Indoor | Low Smoke Zero Halogen (LSZH)

Regulatory Compliance/Certifications

Agency	Classification
ANATEL	Compliant
CHINA-ROHS	Below maximum concentration value
ISO 9001:2015	Designed, manufactured and/or distributed under this quality management system
REACH-SVHC	Compliant as per SVHC revision on www.commscope.com/ProductCompliance
ROHS	Compliant

F4WSCSCAF

UK-ROHS

Compliant



Included Products

460125768

- TeraSPEED® Pre-Radiused SC Connector for 1.6 mm Fiber Cordage, Duplex, Singlemode

760239612

- Fiber indoor cable, TeraSPEED® Low Smoke Zero Halogen Riser MPO Trunk, 24 fibers, 12 fiber subunits, Singlemode G.652.D and G.657.A1, Gel-free, Feet jacket marking, Yellow jacket color, B2ca Flame rating

N-024-MP-8W-F12YL/B2