

CJHRG | IPO6-24LUTP-PG2S-1100E

Base Product



InstaPATCH® Cu GigaSPEED XL® U/UTP LSZH Preterminated Copper Cable, dual row standard density RJ45 plug to 360 1100 Evolve module, 24 links

Product Classification

Regional Availability	Asia Australia/New Zealand EMEA Latin America North America
Portfolio	CommScope®
Product Type	Copper trunk cable assembly
Product Brand	GigaSPEED XL® InstaPATCH® Cu

General Specifications

ANSI/TIA Category	6
Cable Type	U/UTP (unshielded)
Conductor Type	Solid
Interface, Connector A	RJ45 plug
Interface Feature, connector A	Dual row Standard density
Interface, Connector B	360 1100 Evolve module
Interface Feature, connector B	Standard
Link Count	24
Wiring	T568B

Dimensions

Cable Assembly Length Range (m)	2 – 30
Cable Assembly Length Range (ft)	7 – 98

Electrical Specifications

dc Resistance, maximum	0.3 ohm
Safety Voltage Rating	300 V

Ordering Tree

CJHRG | IPO6-24LUTP-PG2S-1100E

1	2	3	4	5	6	7	8	9	10	11	12				
C	A	A	A	C	-	1	1	H	A	B	B	F	0	5	0

Cable Type	
A	Cat 6A X10D – U/UTP (Plenum)
B	Cat 6A X10D – U/UTP (Riser)
C	Cat 6A X10D – U/UTP (LSZH)
D	Cat 6A X10D – F/UTP (Plenum)
E	Cat 6A X10D – F/UTP (Riser)
F	Cat 6A X10D – F/UTP (LSZH)
G	Cat 6 XL – U/UTP (Plenum)
H	Cat 6 XL – U/UTP (Riser)
J	Cat 6 XL – U/UTP (LSZH)
Q	Cat 6A X10D – S/FTP (LSZH)
R	Cat 6 – U/UTP Class B Rated (LSZH)
S	Cat 6A – U/UTP Class B Rated (LSZH)
Y	Cat 6A X10D SD – U/UTP (Riser)

Connector B	
A	Outlet* – Single Row Standard Density
B	Outlet* – Dual Row Standard Density
C	Outlet* – Dual Row High Density
G	RJ45 Plug* – Single Row Standard Density
H	RJ45 Plug* – Dual Row Standard Density
J	RJ45 Plug* – Dual Row High Density
N	1100 Module
R	360 1100 Evolve Module
S	OneLink 2x6
T	OneLink 2x4

Orientation A	
1	Trident Series Flat
2	Right Paired Flat
3	Right Series Flat
4	Left Paired Flat
5	Left Series Flat
6	Trident Paired Flat
A	Trident Series Angled
B	Right Paired Angled
C	Right Series Angled
D	Left Paired Angled
E	Left Series Angled
F	Trident Paired Angled

Orientation B	
1	Trident Series Flat
2	Right Paired Flat
3	Right Series Flat
4	Left Paired Flat
5	Left Series Flat
6	Trident Paired Flat
A	Trident Series Angled
B	Right Paired Angled
C	Right Series Angled
D	Left Paired Angled
E	Left Series Angled
F	Trident Paired Angled
X	Not Applicable

Link	
B	6
C	8
D	12
E	16
F	18
G	24

Outlet Color	
0	Not Applicable
1	Black (BK)
2	Blue (BL)
B	White (WH)

UOM	
F	Foot
M	Meter

Length	
12	XXX

Connector A	
A	Outlet* – Single Row Standard Density
B	Outlet* – Dual Row Standard Density
C	Outlet* – Dual Row High Density
G	RJ45 Plug* – Single Row Standard Density
H	RJ45 Plug* – Dual Row Standard Density
J	RJ45 Plug* – Dual Row High Density
N	1100 Module
R	360 1100 Evolve Module
S	OneLink 2x6
T	OneLink 2x4
X	Unterminated

Bundling	
H	Hook-n-loop
S	Sleaving

Jacket Color	
B	White (WH)
C	Slate (SL)
Z	Blue (BL)

Labeling	
A	Generic Label

- Cords > 1m are authorized for use in channels and are an effective standalone method used to connect active devices
- Cords < 1m are also valid elements for use in a channel or as an equipment interconnect, but due to their limited length are not guaranteed to meet component compliance requirements that were developed to assess the quality of longer cords

Environmental Specifications

Operating Temperature	-10 °C to +60 °C (+14 °F to +140 °F)
Environmental Space	Low Smoke Zero Halogen (LSZH)
Flammability Rating	UL 94 V-0

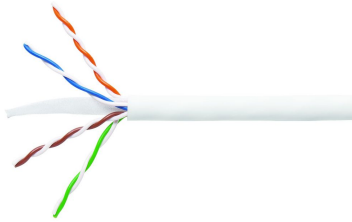
Regulatory Compliance/Certifications

Agency	Classification
ISO 9001:2015	Designed, manufactured and/or distributed under this quality management system

Included Products

- 3071E-4/23 – GigaSPEED XL® 3071 ETL Verified Category 6 U/UTP Cable, low smoke zero halogen, 4 pair count
- 760151167
360-IPR-1100-GS3-DM6 – SYSTIMAX 360™ GigaSPEED XL® 1100GS3 Evolve Category 6 U/UTP Distribution Module, 6 port

3071E-4/23



GigaSPEED XL® 3071 ETL Verified Category 6 U/UTP Cable, low smoke zero halogen, 4 pair count

Product Classification

Regional Availability	Asia Australia/New Zealand EMEA Latin America
Portfolio	SYSTIMAX®
Product Type	Twisted pair cable
Product Brand	GigaSPEED XL®

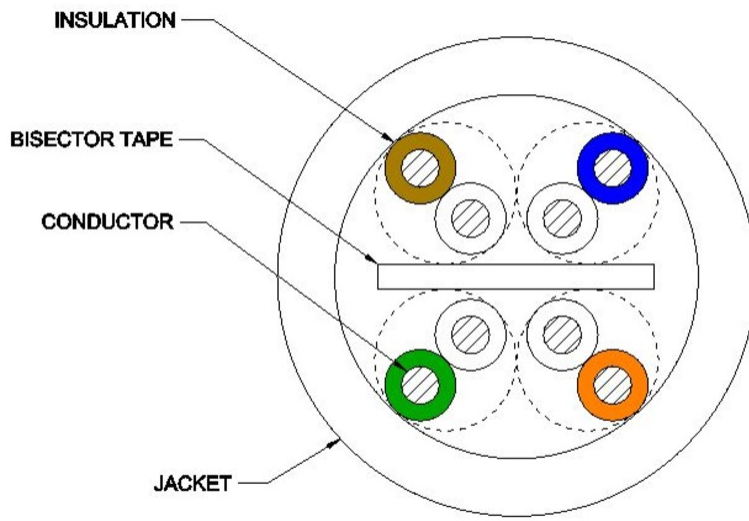
General Specifications

Product Number	3071E
ANSI/TIA Category	6
Cable Component Type	Horizontal
Cable Type	U/UTP (unshielded)
Conductor Type, singles	Solid
Conductors, quantity	8
Pairs, quantity	4
Separator Type	Bisector
Transmission Standards	ANSI/TIA-568.2-D CENELEC EN 50288-6-1 ISO/IEC 11801 Class E

Dimensions

Diameter Over Jacket, nominal	5.918 mm 0.233 in
Jacket Thickness	0.508 mm 0.02 in
Conductor Gauge, singles	23 AWG

Cross Section Drawing



Electrical Specifications

dc Resistance Unbalance, maximum	5 %
dc Resistance, maximum	7.61 ohms/100 m 2.32 ohms/100 ft
Mutual Capacitance at Frequency	5.6 nF/100 m @ 1 kHz
Nominal Velocity of Propagation (NVP)	69 %
Operating Frequency, maximum	300 MHz
Operating Voltage, maximum	80 V
Remote Powering	Fully complies with the recommendations set forth by IEEE 802.3bt (Type 4) for the safe delivery of power over LAN cable when installed according to ISO/IEC 14763-2, CENELEC EN 50174-1, CENELEC EN 50174-2 or TIA TSB-184-A

Material Specifications

Conductor Material	Bare copper
Insulation Material	Polyolefin
Jacket Material	Low Smoke Zero Halogen (LSZH)
Separator Material	Polyolefin

Mechanical Specifications

Pulling Tension, maximum	11.34 kg 25 lb
---------------------------------	------------------

3071E-4/23

Environmental Specifications

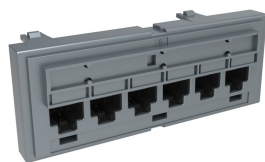
Installation temperature	0 °C to +60 °C (+32 °F to +140 °F)
Operating Temperature	-20 °C to +60 °C (-4 °F to +140 °F)
Acid Gas Test Method	IEC 60754-2
Environmental Space	Low Smoke Zero Halogen (LSZH)
Flame Test Method	IEC 60332-3-22
Smoke Test Method	IEC 61034-2

Packaging and Weights

Cable weight	37.204 kg/km 25 lb/kft
---------------------	--------------------------

Regulatory Compliance/Certifications

Agency	Classification
ISO 9001:2015	Designed, manufactured and/or distributed under this quality management system



SYSTIMAX 360™ GigaSPEED XL® 1100GS3 Evolve Category 6 U/UTP Distribution Module, 6 port

Product Classification

Regional Availability

Asia | Australia/New Zealand | EMEA | Latin America | North America

Portfolio

SYSTIMAX®

Product Type

Module

Product Brand

GigaSPEED XL®

General Specifications

ANSI/TIA Category

6

Cable Type

Unshielded

Color

Cool gray

Conductor Type

Solid | Stranded

Intelligence Type

iPatch® ready

Modules, quantity

1

Rack Type

EIA 19 in

Rack Units

1

Termination Type

IDC

Total Ports, quantity

6

Wiring

T568A | T568B

Dimensions

Height

43.688 mm | 1.72 in

Width

106.68 mm | 4.2 in

Depth

27.432 mm | 1.08 in

Compatible Diameter Over Dielectric, maximum

1.168 mm | 0.046 in

Compatible Diameter Over Dielectric, minimum

0.762 mm | 0.03 in

Compatible Conductor Gauge, solid

22 AWG | 24 AWG

760151167 | 360-IPR-1100-GS3-DM6

Compatible Conductor Gauge, stranded

22 AWG | 24 AWG

Electrical Specifications

Current Rating at Temperature

1.5 A @ 20 °C | 1.5 A @ 68 °F

Dielectric Withstand Voltage, RMS, conductive surface

1,500 Vac @ 60 Hz

Dielectric Withstand Voltage, RMS, contact-to-contact

1,000 Vac @ 60 Hz

Insulation Resistance, minimum

500 MOhm

Material Specifications

Contact Plating Material

Precious metals

Material Type

High-impact, flame retardant, thermoplastic | Powder-coated steel

Termination Contact Plating

Nickel

Mechanical Specifications

Plug Insertion Life, minimum

750 times

Plug Insertion Life, test plug

IEC 60603-7 compliant plug

Plug Retention Force, minimum

133.447 N | 30 lbf

Environmental Specifications

Operating Temperature

-10 °C to +60 °C (+14 °F to +140 °F)

Storage Temperature

-40 °C to +70 °C (-40 °F to +158 °F)

Relative Humidity

Up to 95%, non-condensing

Flammability Rating

UL 94 V-0

Safety Standard

UL | cUL

Packaging and Weights

Packaging quantity

1

Weight, net

0.068 kg | 0.15 lb

Regulatory Compliance/Certifications

Agency

Classification

CHINA-ROHS

Below maximum concentration value

ISO 9001:2015

Designed, manufactured and/or distributed under this quality management system

REACH-SVHC

Compliant as per SVHC revision on www.commscope.com/ProductCompliance

ROHS Compliant

UK-ROHS Compliant

