

CGNRF | IP06-18PUTP-1100L-1100E

Base Product



InstaPATCH® Cu GigaSPEED XL® U/UTP Plenum Preterminated Copper Cable, 1100 module to 360 1100 Evolve module, 18 links

Product Classification

Regional Availability	Asia Australia/New Zealand EMEA Latin America North America
Portfolio	CommScope®
Product Type	Copper trunk cable assembly
Product Brand	GigaSPEED XL® InstaPATCH® Cu

General Specifications

ANSI/TIA Category	6
Cable Type	U/UTP (unshielded)
Conductor Type	Solid
Interface, Connector A	1100 module
Interface Feature, connector A	Standard
Interface, Connector B	360 1100 Evolve module
Interface Feature, connector B	Standard
Link Count	18
Wiring	T568B

Dimensions

Cable Assembly Length Range (m)	2 – 90
Cable Assembly Length Range (ft)	7 – 295

Electrical Specifications

dc Resistance, maximum	0.3 ohm
Safety Voltage Rating	300 V

Ordering Tree

CGNRF | IP06-18PUTP-1100L-1100E

1 2 3 4 5 6 7 8 9 10 11 12												
C A A A C - 1 1 H A B B F 0 5 0												
Cable Type	Connector B			Orientation A			Orientation B					
1 A Cat 6A X10D – U/UTP (Plenum) B Cat 6A X10D – U/UTP (Riser) C Cat 6A X10D – U/UTP (LSZH) D Cat 6A X10D – F/UTP (Plenum) E Cat 6A X10D – F/UTP (Riser) F Cat 6A X10D – F/UTP (LSZH) G Cat 6 XL – U/UTP (Plenum) H Cat 6 XL – U/UTP (Riser) J Cat 6 XL – U/UTP (LSZH) Q Cat 6A X10D – S/FTP (LSZH) R Cat 6 – U/UTP Class B Rated (LSZH) S Cat 6A – U/UTP Class B Rated (LSZH) Y Cat 6A X10D SD – U/UTP (Riser)	3 A Outlet* – Single Row Standard Density B Outlet* – Dual Row Standard Density C Outlet* – Dual Row High Density G RJ45 Plug* – Single Row Standard Density H RJ45 Plug* – Dual Row Standard Density J RJ45 Plug* – Dual Row High Density N 1100 Module R 360 1100 Evolve Module S OneLink 2x6 T OneLink 2x4			5 1 Trident Series Flat 2 Right Paired Flat 3 Right Series Flat 4 Left Paired Flat 5 Left Series Flat 6 Trident Paired Flat A Trident Series Angled B Right Paired Angled C Right Series Angled D Left Paired Angled E Left Series Angled F Trident Paired Angled			6 1 Trident Series Flat 2 Right Paired Flat 3 Right Series Flat 4 Left Paired Flat 5 Left Series Flat 6 Trident Paired Flat A Trident Series Angled B Right Paired Angled C Right Series Angled D Left Paired Angled E Left Series Angled F Trident Paired Angled X Not Applicable					
Connector A	Link			Outlet Color			UOM			Length		
2 A Outlet* – Single Row Standard Density B Outlet* – Dual Row Standard Density C Outlet* – Dual Row High Density G RJ45 Plug* – Single Row Standard Density H RJ45 Plug* – Dual Row Standard Density J RJ45 Plug* – Dual Row High Density N 1100 Module R 360 1100 Evolve Module S OneLink 2x6 T OneLink 2x4 X Unterminated	4 B 6 C 8 D 12 E 16 F 18 G 24			9 0 Not Applicable 1 Black (BK) 2 Blue (BL) 3 White (WH)			11 F Foot M Meter			12 XXX		
	Bundling			Jacket Color			<ul style="list-style-type: none"> Cords > 1m are authorized for use in channels and are an effective standalone method used to connect active devices Cords < 1m are also valid elements for use in a channel or as an equipment interconnect, but due to their limited length are not guaranteed to meet component compliance requirements that were developed to assess the quality of longer cords 					
	7 H Hook-n-loop S Sleaving			10 B White (WH) C Slate (SL) Z Blue (BL)								
	Labeling											
	8 A Generic Label											

Environmental Specifications

Operating Temperature	-10 °C to +60 °C (+14 °F to +140 °F)
Environmental Space	Plenum
Flammability Rating	UL 94 V-0

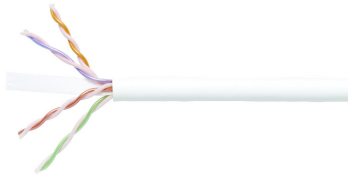
Regulatory Compliance/Certifications

Agency	Classification
ISO 9001:2015	Designed, manufactured and/or distributed under this quality management system

Included Products

2071E-4/23	–	GigaSPEED XL® 2071E ETL Verified Category 6 U/UTP Cable, plenum, 4 pair count
760151167	–	SYSTIMAX 360™ GigaSPEED XL® 1100GS3 Evolve Category 6 U/UTP Distribution Module, 6 port
360-IPR-1100-GS3-DM6		

2071E-4/23



GigaSPEED XL® 2071E ETL Verified Category 6 U/UTP Cable, plenum, 4 pair count

Product Classification

Regional Availability	Asia Australia/New Zealand EMEA Latin America North America
Portfolio	SYSTIMAX®
Product Type	Twisted pair cable
Product Brand	GigaSPEED XL®

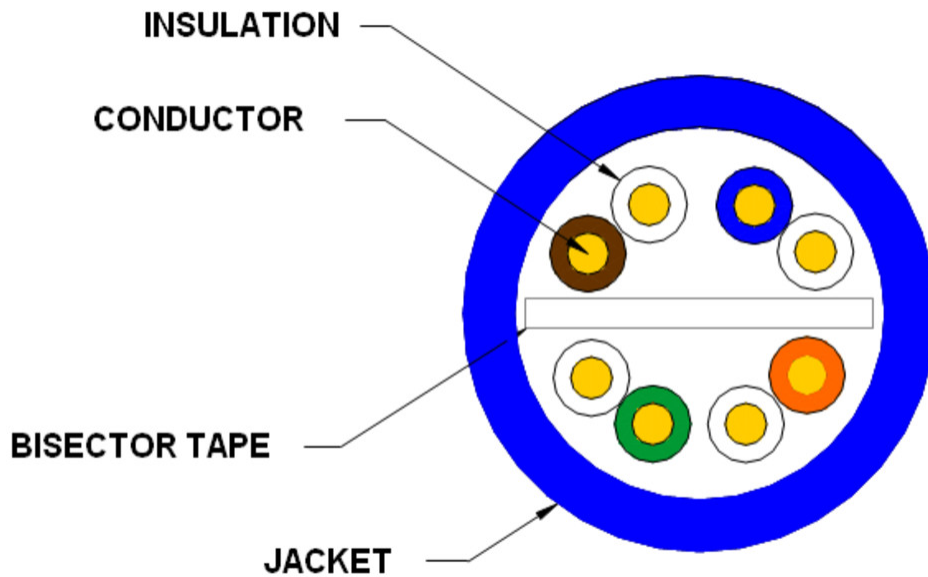
General Specifications

Product Number	2071E
ANSI/TIA Category	6
Cable Component Type	Horizontal
Cable Type	U/UTP (unshielded)
Conductor Type, singles	Solid
Conductors, quantity	8
Pairs, quantity	4
Separator Type	Bisector
Transmission Standards	ANSI/TIA-568.2-D CENELEC EN 50288-6-1 ISO/IEC 11801 Class E

Dimensions

Diameter Over Jacket, nominal	5.74 mm 0.226 in
Jacket Thickness	0.559 mm 0.022 in
Conductor Gauge, singles	23 AWG

Cross Section Drawing



Electrical Specifications

dc Resistance Unbalance, maximum	5 %
dc Resistance, maximum	7.61 ohms/100 m 2.32 ohms/100 ft
Dielectric Strength, minimum	1500 Vac 2500 Vdc
Mutual Capacitance at Frequency	5.6 nF/100 m @ 1 kHz
Nominal Velocity of Propagation (NVP)	71 %
Operating Frequency, maximum	300 MHz
Operating Voltage, maximum	80 V
Remote Powering	Fully complies with the recommendations set forth by IEEE 802.3bt (Type 4) for the safe delivery of power over LAN cable when installed according to ISO/IEC 14763-2, CENELEC EN 50174-1, CENELEC EN 50174-2 or TIA TSB-184-A

Material Specifications

Conductor Material	Bare copper
Insulation Material	FEP Polyolefin
Jacket Material	PVC
Separator Material	Flame retardant polyolefin

Mechanical Specifications

2071E-4/23

Pulling Tension, maximum 11.34 kg | 25 lb

Environmental Specifications

Installation temperature 0 °C to +60 °C (+32 °F to +140 °F)

Operating Temperature -20 °C to +60 °C (-4 °F to +140 °F)

Environmental Space Plenum

Temperature Rating, UL 75 °C | 167 °F

Flame Test Method CMP/FT6

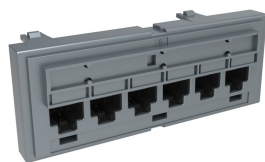
Smoke Test Method CMP/FT6

Packaging and Weights

Cable weight 43.157 kg/km | 29 lb/kft

Regulatory Compliance/Certifications

Agency	Classification
ISO 9001:2015	Designed, manufactured and/or distributed under this quality management system



SYSTIMAX 360™ GigaSPEED XL® 1100GS3 Evolve Category 6 U/UTP Distribution Module, 6 port

Product Classification

Regional Availability

Asia | Australia/New Zealand | EMEA | Latin America | North America

Portfolio

SYSTIMAX®

Product Type

Module

Product Brand

GigaSPEED XL®

General Specifications

ANSI/TIA Category

6

Cable Type

Unshielded

Color

Cool gray

Conductor Type

Solid | Stranded

Intelligence Type

iPatch® ready

Modules, quantity

1

Rack Type

EIA 19 in

Rack Units

1

Termination Type

IDC

Total Ports, quantity

6

Wiring

T568A | T568B

Dimensions

Height

43.688 mm | 1.72 in

Width

106.68 mm | 4.2 in

Depth

27.432 mm | 1.08 in

Compatible Diameter Over Dielectric, maximum

1.168 mm | 0.046 in

Compatible Diameter Over Dielectric, minimum

0.762 mm | 0.03 in

Compatible Conductor Gauge, solid

22 AWG | 24 AWG

760151167 | 360-IPR-1100-GS3-DM6

Compatible Conductor Gauge, stranded

22 AWG | 24 AWG

Electrical Specifications

Current Rating at Temperature

1.5 A @ 20 °C | 1.5 A @ 68 °F

Dielectric Withstand Voltage, RMS, conductive surface

1,500 Vac @ 60 Hz

Dielectric Withstand Voltage, RMS, contact-to-contact

1,000 Vac @ 60 Hz

Insulation Resistance, minimum

500 MOhm

Material Specifications

Contact Plating Material

Precious metals

Material Type

High-impact, flame retardant, thermoplastic | Powder-coated steel

Termination Contact Plating

Nickel

Mechanical Specifications

Plug Insertion Life, minimum

750 times

Plug Insertion Life, test plug

IEC 60603-7 compliant plug

Plug Retention Force, minimum

133.447 N | 30 lbf

Environmental Specifications

Operating Temperature

-10 °C to +60 °C (+14 °F to +140 °F)

Storage Temperature

-40 °C to +70 °C (-40 °F to +158 °F)

Relative Humidity

Up to 95%, non-condensing

Flammability Rating

UL 94 V-0

Safety Standard

UL | cUL

Packaging and Weights

Packaging quantity

1

Weight, net

0.068 kg | 0.15 lb

Regulatory Compliance/Certifications

Agency

Classification

CHINA-ROHS

Below maximum concentration value

ISO 9001:2015

Designed, manufactured and/or distributed under this quality management system

REACH-SVHC

Compliant as per SVHC revision on www.commscope.com/ProductCompliance

ROHS Compliant

UK-ROHS Compliant

