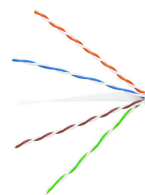


760151894 | 5071A BLU C6 4/23 U/UTP W1000



GigaSPEED XL® 5071A ETL Verified Category 6 U/UTP Cable, LSZH, non-plenum CMR rated, blue jacket, 4 pair count, 1000 ft (305 m) length, WE TOTE® box

Product Classification

Regional Availability	Asia Australia/New Zealand EMEA Latin America North America
Portfolio	SYSTIMAX®
Product Type	Twisted pair cable
Product Brand	GigaSPEED XL®

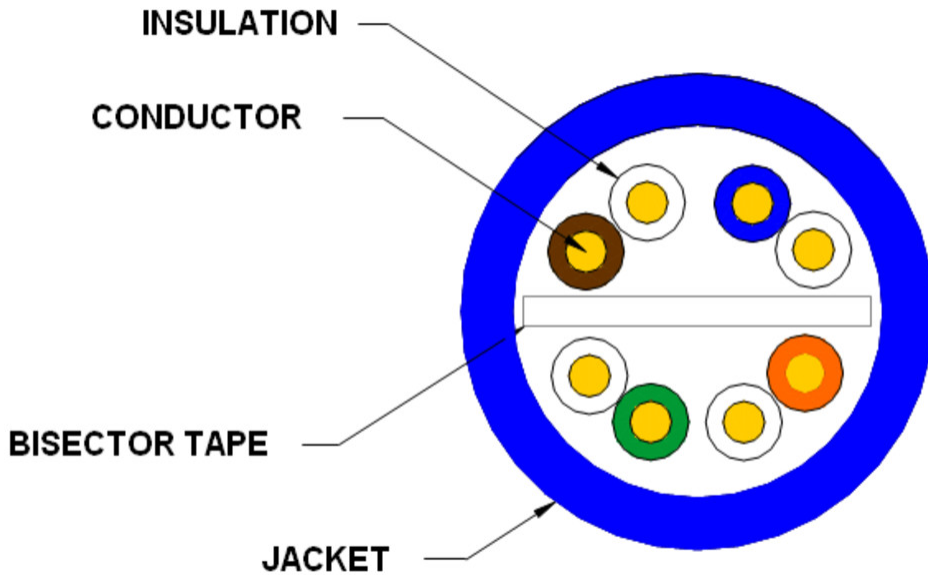
General Specifications

Product Number	5071A
ANSI/TIA Category	6
Cable Component Type	Horizontal
Cable Type	U/UTP (unshielded)
Conductor Type, singles	Solid
Conductors, quantity	8
Jacket Color	Blue
Note	A maximum recommended horizontal cable length is 70 meters (230 feet) for a 75C environment Elevated temperatures may require cable length derating per ANSI /TIA 568-C.2 Annex G to ensure channel insertion loss compliance
Pairs, quantity	4
Separator Type	Bisector
Transmission Standards	ANSI/TIA-568.2-D CENELEC EN 50288-6-1 ISO/IEC 11801 Class E

Dimensions

Cable Length	304.8 m 1000 ft
Diameter Over Jacket, nominal	6.096 mm 0.24 in
Jacket Thickness	0.635 mm 0.025 in
Conductor Gauge, singles	23 AWG

Cross Section Drawing



Electrical Specifications

dc Resistance Unbalance, maximum	5 %
dc Resistance, maximum	7.61 ohms/100 m 2.32 ohms/100 ft
Dielectric Strength, minimum	1500 Vac 2500 Vdc
Mutual Capacitance at Frequency	5.6 nF/100 m @ 1 kHz
Nominal Velocity of Propagation (NVP)	69 %
Operating Frequency, maximum	300 MHz
Operating Voltage, maximum	80 V
Remote Powering	Fully complies with the recommendations set forth by IEEE 802.3bt (Type 4) for the safe delivery of power over LAN cable when installed according to ISO/IEC 14763-2, CENELEC EN 50174-1, CENELEC EN 50174-2 or TIA TSB-184-A

Material Specifications

Conductor Material	Bare copper
Insulation Material	Polyolefin
Jacket Material	Low Smoke Zero Halogen (LSZH)
Separator Material	Polyolefin

Mechanical Specifications

760151894 | 5071A BLU C6 4/23 U/UTP W1000

Pulling Tension, maximum 11.34 kg | 25 lb

Environmental Specifications

Installation temperature 0 °C to +60 °C (+32 °F to +140 °F)
Operating Temperature -40 °C to +75 °C (-40 °F to +167 °F)
Environmental Space Low Smoke Zero Halogen (LSZH) | Non-plenum
Temperature Rating, UL 75 °C | 167 °F
Fire Safety Listing CM-LS | CMR
Flame Test Method UL 1666 | UL 1685
Smoke Test Method UL 1685-LS

Packaging and Weights

Cable weight 41.564 kg/km | 27.93 lb/kft
Packaging Type WE TOTE® box

Regulatory Compliance/Certifications

Agency	Classification
CHINA-ROHS	Below maximum concentration value
ISO 9001:2015	Designed, manufactured and/or distributed under this quality management system
REACH-SVHC	Compliant as per SVHC revision on www.commscope.com/ProductCompliance
ROHS	Compliant
UK-ROHS	Compliant

