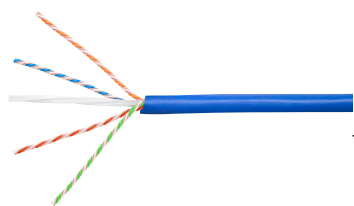


760107326 | 3091B BLU C6A 4/23 U/UTP W1000



GigaSPEED X10D® 3091B ETL Verified Category 6A U/UTP Cable, blue jacket, 4 pair count, 1000 ft (305 m) length, WE TOTE® box

Product Classification

| | |
|------------------------------|---|
| Regional Availability | Asia Australia/New Zealand EMEA Latin America |
| Portfolio | SYSTIMAX® |
| Product Type | Twisted pair cable |
| Product Brand | GigaSPEED X10D® |

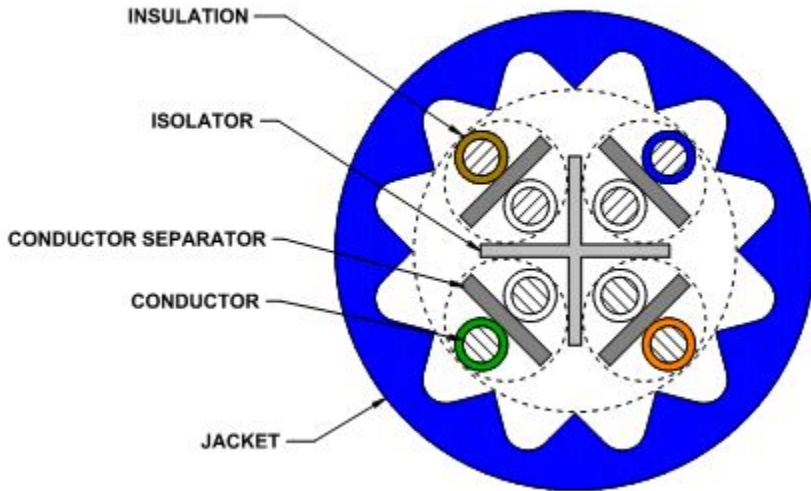
General Specifications

| | |
|--------------------------------|---|
| Product Number | 3091B |
| ANSI/TIA Category | 6A |
| Cable Component Type | Horizontal |
| Cable Type | U/UTP (unshielded) |
| Conductor Type, singles | Solid |
| Conductors, quantity | 8 |
| Jacket Color | Blue |
| Pairs, quantity | 4 |
| Separator Type | Isolator |
| Transmission Standards | ANSI/TIA-568.2-D ISO/IEC 11801 Class EA |

Dimensions

| | |
|--|---------------------|
| Cable Length | 304.8 m 1000 ft |
| Diameter Over Insulated Conductor | 0.864 mm 0.034 in |
| Diameter Over Jacket, nominal | 7.239 mm 0.285 in |
| Jacket Thickness | 1.295 mm 0.051 in |
| Conductor Gauge, singles | 23 AWG |

Cross Section Drawing



Electrical Specifications

| | |
|--|---|
| dc Resistance Unbalance, maximum | 4 % |
| dc Resistance, maximum | 7.61 ohms/100 m 2.32 ohms/100 ft |
| Delay Skew, maximum | 45 ns |
| Dielectric Strength, minimum | 2500 Vdc |
| Mutual Capacitance at Frequency | 6.0 nF/100 m @ 1 kHz |
| Nominal Velocity of Propagation (NVP) | 67 % |
| Operating Frequency, maximum | 550 MHz |
| Operating Voltage, maximum | 80 V |
| Propagation Delay, maximum | 536 ns/100m @500MHz |
| Remote Powering | Fully complies with the recommendations set forth by IEEE 802.3bt (Type 4) for the safe delivery of power over LAN cable when installed according to ISO/IEC 14763-2, CENELEC EN 50174-1, CENELEC EN 50174-2 or TIA TSB-184-A |
| Segregation Class | c |

Material Specifications

| | |
|-----------------------------|-------------------------------|
| Conductor Material | Bare copper |
| Insulation Material | Polyolefin |
| Jacket Material | Low Smoke Zero Halogen (LSZH) |
| Separator Material | Polyolefin |
| Separator 2 Material | Polyolefin |

Mechanical Specifications

Pulling Tension, maximum 11.34 kg | 25 lb

Environmental Specifications

Installation temperature 0 °C to +60 °C (+32 °F to +140 °F)

Operating Temperature -20 °C to +60 °C (-4 °F to +140 °F)

Acid Gas Test Method IEC 60754-2

EN50575 CPR Cable EuroClass Fire Performance Dca

EN50575 CPR Cable EuroClass Smoke Rating s2

EN50575 CPR Cable EuroClass Droplets Rating d2

EN50575 CPR Cable EuroClass Acidity Rating a1

Environmental Space Low Smoke Zero Halogen (LSZH)

Flame Test Method IEC 60332-3-22

Smoke Test Method IEC 61034-2

Packaging and Weights

Cable weight 54.913 kg/km | 36.9 lb/kft

Packaging Type WE TOTE® box

Regulatory Compliance/Certifications

| Agency | Classification |
|---------------|--|
| CENELEC | EN 50575 compliant, Declaration of Performance (DoP) available |
| CHINA-ROHS | Below maximum concentration value |
| ISO 9001:2015 | Designed, manufactured and/or distributed under this quality management system |
| REACH-SVHC | Compliant as per SVHC revision on www.commscope.com/ProductCompliance |
| ROHS | Compliant |
| UK-ROHS | Compliant |

