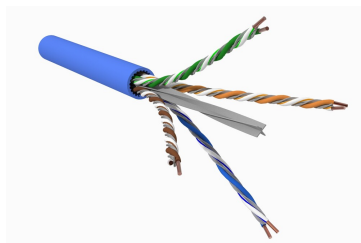


760259925 | 2073A BLU C6 4/21 U/UTP R3000



GigaREACH™ XL 2073A Category 6 U/UTP Cable, CMP Plenum, blue jacket, 4 pair count, 3000 ft (915 m) length, reel

Product Classification

Regional Availability

Asia | Australia/New Zealand | China | EMEA | Europe | India | Latin America | North America

Portfolio

SYSTIMAX®

Product Type

Twisted pair cable

Product Brand

GigaREACH™ XL

General Specifications

Product Number

2073A

ANSI/TIA Category

6

Cable Component Type

Horizontal

Cable Type

U/UTP (unshielded)

Conductor Type, singles

Solid

Conductors, quantity

8

Jacket Color

Blue

Pairs, quantity

4

Separator Type

Isolator | Tape separator

Transmission Standards

ANSI/TIA-568-D.2 | CENELEC EN 50288-6-1 | ISO/IEC 11801 Class E

Dimensions

Cable Length

914.4 m | 3000 ft

Diameter Over Jacket, nominal

7.62 mm | 0.3 in

Jacket Thickness

1.016 mm | 0.04 in

Conductor Gauge, singles

21 AWG

Electrical Specifications

Insertion Loss Margin

20% to Category 6 standard

760259925 | 2073A BLU C6 4/21 U/UTP R3000

Characteristic Impedance	100 ohm
dc Resistance Unbalance, maximum	5 %
dc Resistance, maximum	4.69 ohms/100 m 1.43 ohms/100 ft
Delay Skew, maximum	45 ns
Dielectric Strength, minimum	1500 Vac 2500 Vdc
LP (Limited Power) Rating	0.7 A
Mutual Capacitance at Frequency	6.4 nF/100 m @ 1 kHz
Nominal Velocity of Propagation (NVP)	74 %
Operating Frequency, maximum	250 MHz
Operating Voltage, maximum	80 V
Remote Powering	Fully complies with the recommendations set forth by IEEE 802.3bt (Type 4) for the safe delivery of power over LAN cable when installed according to ISO/IEC 14763-2, CENELEC EN 50174-1, CENELEC EN 50174-2 or TIA TSB-184-A
Safety Voltage Rating	300 V

Representative Image



Material Specifications

Conductor Material	Bare copper
Insulation Material	FEP Polyolefin

760259925 | 2073A BLU C6 4/21 U/UTP R3000

Jacket Material	Fire retardant PVC
Separator Material	Flame retardant polyolefin

Mechanical Specifications

Pulling Tension, maximum	11.34 kg 25 lb
---------------------------------	------------------

Environmental Specifications

Installation temperature	0 °C to +60 °C (+32 °F to +140 °F)
Operating Temperature	-20 °C to +75 °C (-4 °F to +167 °F)
EN50575 CPR Cable EuroClass Fire Performance	No Rating
Environmental Note	Plenum
Environmental Space	Indoor Plenum
Temperature Rating, ETL	90 °C 194 °F
Fire Safety Listing	CMP
Flame Test Method	CMP NFPA 262 UL 444 UL 910

Packaging and Weights

Cable weight	218.76 kg/km 147 lb/kft
Packaging Type	Reel

Regulatory Compliance/Certifications

Agency	Classification
CHINA-ROHS	Below maximum concentration value
REACH-SVHC	Compliant as per SVHC revision on www.commscope.com/ProductCompliance
ROHS	Compliant
UK-ROHS	Compliant

