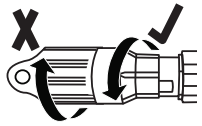


## FA-FWS-E-250-1 and FA-FWS-E-250-1C Installation

for HELIAX® FiberFeed® Solutions

Bulletin 7713114 Revision F Page 1 of 2

CommScope Infrastructure Academy offers installation training.



If Weather Shroud has a pre-installed end cap, carefully remove end cap by holding it stationary and turning the top nut counter-clock wise. If Weatherproofing Shroud has been factory installed skip to step 5.



Scan to view installation video

**1**

Carefully feed compression nut over DLC connector and slide onto jacketing. **Do not twist or bend the DLC connector or fiber. Excessive force or bending may break the fiber.**

**2**

Straighten the sleeve and feed the fiber connector into the sleeve until the DLC connector is even with the RRU end.

**3**

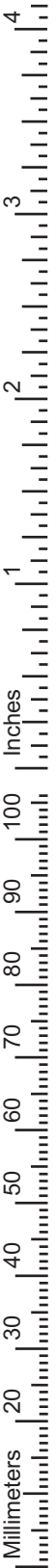
Wrap the rubber split grommet around the jacketing and push it into the clamping fingers until flush with the end.

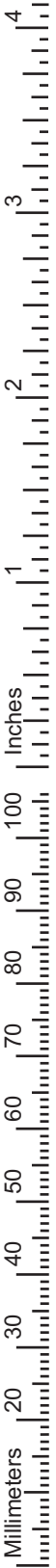
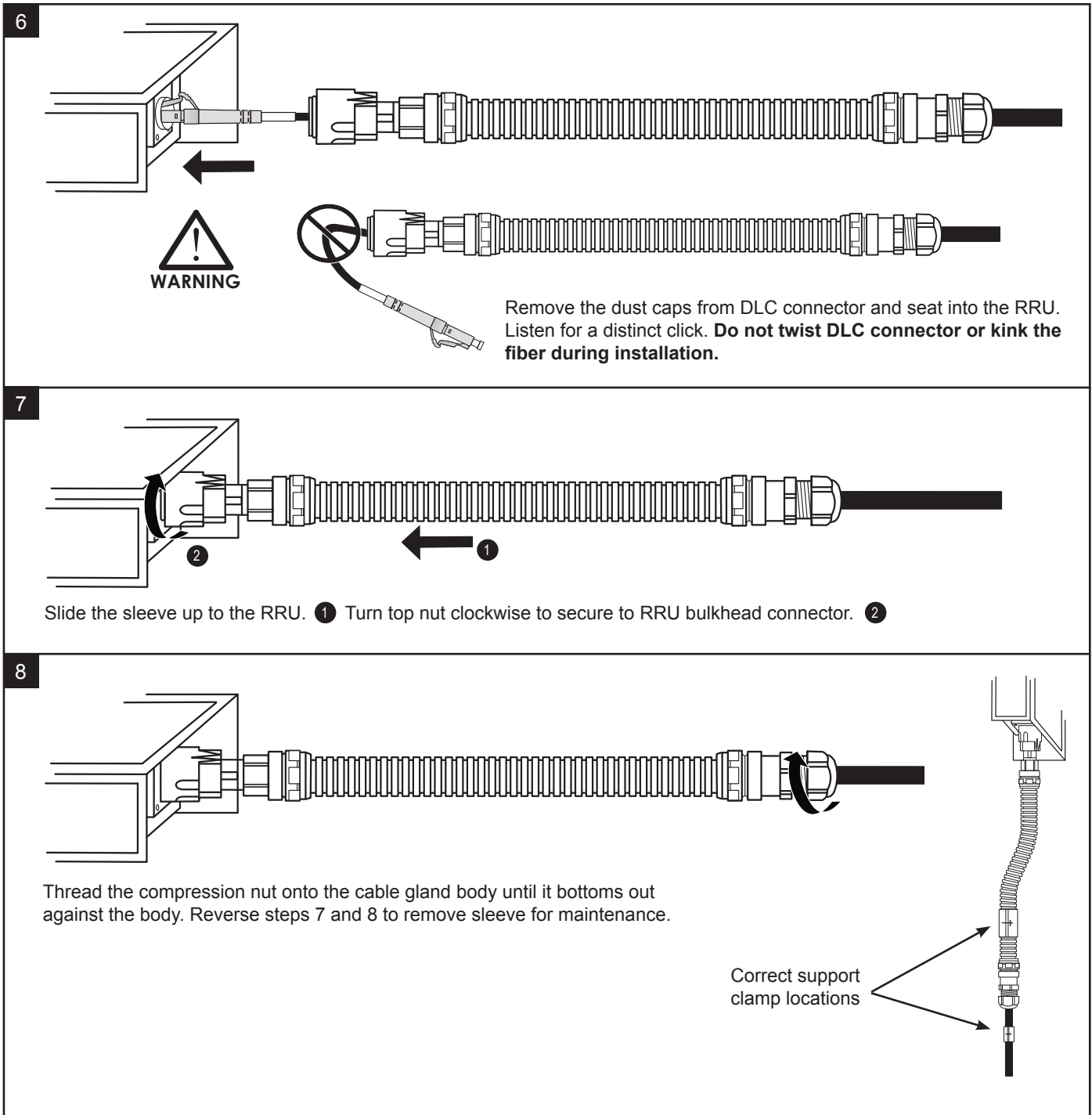
**4**

Engage the compression nut four full revolution to keep the grommet in place but **do not tighten** fully to allow for adjustment during RRU connection.

**5**

Slide sleeve down jacketing to allow access to the DLC connector. **Do not pull** the DLC connector through the sleeve or damage may occur.





**CommScope**  
 1100 CommScope Place SE P.O. Box 339, Hickory, NC 28603-0339  
 (828) 324-2200 (800) 982-1708  
 www.commscope.com

**Customer Service 24 hours**  
 North America: +1-800-255-1479 (toll free)  
 Any country: +1-779-435-6500  
 email: acicustomersupportcenter@commscope.com

Notice: CommScope disclaims any liability or responsibility for the results of improper or unsafe installation, inspection, maintenance, or removal practices.  
 Aviso: CommScope no acepta ninguna obligación ni responsabilidad como resultado de prácticas incorrectas o peligrosas de instalación, inspección, mantenimiento o retiro.  
 Avis : CommScope décline toute responsabilité pour les conséquences de procédures d'installation, d'inspection, d'entretien ou de retrait incorrectes ou dangereuses.  
 Hinweis: CommScope lehnt jede Haftung oder Verantwortung für Schäden ab, die aufgrund unsachgemäßer Installation, Überprüfung, Wartung oder Demontage auftreten.  
 Atenção: A CommScope abdica do direito de toda responsabilidade pelos resultados de práticas inadequadas e sem segurança de instalação, inspeção, manutenção ou remoção.  
 Avvertenza: CommScope declina eventuali responsabilità derivanti dall'esecuzione di procedure di installazione, ispezione, manutenzione e smontaggio improprie o poco sicure.  
 注意: CommScope 公司申明對於不恰當或不安全的安裝、檢驗、維修或拆卸操作所導致的後果不負責任 何義務和責任