

4P-4M-B2



4-port sector antenna, 4x 1695–2690 MHz, 65° HPBW, 2x RET

- All Internal RET actuators are connected in “Cascaded SRET” configuration
- Uses the 4.3-10 connector which is 40 percent smaller than the 7-16 DIN connector

General Specifications

Antenna Type	Sector
Band	Single band
Color	Light Gray (RAL 7035)
Grounding Type	RF connector inner conductor and body grounded to reflector and mounting bracket
Performance Note	Outdoor usage
Radome Material	Fiberglass, UV resistant
Radiator Material	Aluminum
Reflector Material	Aluminum
RF Connector Interface	4.3-10 Female
RF Connector Location	Bottom
RF Connector Quantity, mid band	4
RF Connector Quantity, total	4

Remote Electrical Tilt (RET) Information

RET Hardware	CommRET v2
RET Interface	8-pin DIN Female 8-pin DIN Male
RET Interface, quantity	1 female 1 male
Input Voltage	10–30 Vdc
Internal RET	Mid band (2)
Power Consumption, active state, maximum	10 W
Power Consumption, idle state, maximum	2 W
Protocol	3GPP/AISG 2.0 (Single RET)

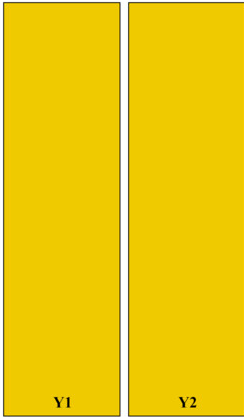
Dimensions

Width	257 mm 10.118 in
--------------	--------------------

4P-4M-B2

Depth	87 mm 3.425 in
Length	1757 mm 69.173 in
Net Weight, antenna only	12.5 kg 27.558 lb

Array Layout



Array ID	Frequency (MHz)	RF Connector	HPBW	RET (SRET)	AISG No.	AISG RET UID
Y1	1695-2690	1 - 2	65°	1	AISG1	CPXXXXXXXXXXXXX1
Y2	1695-2690	3 - 4	65°	2	AISG1	CPXXXXXXXXXXXXX2

(Sizes of colored boxes are not true depictions of array sizes)

Port Configuration



Electrical Specifications

Impedance	50 ohm
------------------	--------

4P-4M-B2

Operating Frequency Band	1695 – 2690 MHz
Polarization	±45°
Total Input Power, maximum	500 W

Electrical Specifications

	Y1,Y2	Y1,Y2	Y1,Y2	Y1,Y2	Y1,Y2
Frequency Band, MHz	1695–1880	1850–1990	1920–2200	2300–2500	2490–2690
RF Port	1,2,3,4	1,2,3,4	1,2,3,4	1,2,3,4	1,2,3,4
Gain, dBi	18.2	18.6	18.9	18.8	18.8
Beamwidth, Horizontal, degrees	67	64	64	61	57
Beamwidth, Vertical, degrees	5.7	5.4	5.1	4.3	4
Beam Tilt, degrees	2–12	2–12	2–12	2–12	2–12
USLS (First Lobe), dB	19	21	21	20	18
Front-to-Back Ratio, Copolarization 180° ± 30°, dB	30	32	32	32	32
Isolation, Cross Polarization, dB	28	28	28	28	28
Isolation, Inter-band, dB	28	28	28	28	28
VSWR Return loss, dB	1.5 14.0	1.5 14.0	1.5 14.0	1.5 14.0	1.5 14.0
PIM, 3rd Order, 2 x 20 W, dBc	-153	-153	-153	-153	-153
Input Power per Port, maximum, watts	200	200	200	200	200

Mechanical Specifications

Wind Loading @ Velocity, frontal	368.0 N @ 150 km/h (82.7 lbf @ 150 km/h)
Wind Loading @ Velocity, lateral	95.0 N @ 150 km/h (21.4 lbf @ 150 km/h)
Wind Loading @ Velocity, rear	315.0 N @ 150 km/h (70.8 lbf @ 150 km/h)
Wind Speed, maximum	241 km/h (150 mph)

Packaging and Weights

Width, packed	352 mm 13.858 in
Depth, packed	207 mm 8.15 in
Length, packed	1937 mm 76.26 in
Weight, gross	20 kg 44.092 lb

4P-4M-B2

Regulatory Compliance/Certifications

Agency

ISO 9001:2015

Classification

Designed, manufactured and/or distributed under this quality management system

Included Products

BSAMNT-B95-01

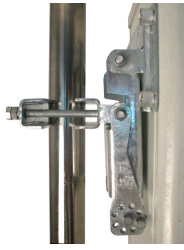
- Wide Profile Antenna Downtilt Mounting Kit for 2.4 - 4.5 in (60 - 115 mm) OD round members. Kit contains one scissor top bracket set and one bottom bracket set.

* Footnotes

Performance Note

Severe environmental conditions may degrade optimum performance

BSAMNT-B95-01



Wide Profile Antenna Downtilt Mounting Kit for 2.4 - 4.5 in (60 - 115 mm) OD round members. Kit contains one scissor top bracket set and one bottom bracket set.

Product Classification

Product Type Downtilt mounting kit

General Specifications

Application Outdoor

Color Silver

Dimensions

Compatible Diameter, maximum 115 mm | 4.528 in

Compatible Diameter, minimum 61 mm | 2.402 in

Material Specifications

Material Type Galvanized steel

Packaging and Weights

Included Brackets | Hardware

Packaging quantity 2

Weight, gross 3.6 kg | 7.937 lb

Regulatory Compliance/Certifications

Agency

CE
ISO 9001:2015

Classification

Compliant with the relevant CE product directives
Designed, manufactured and/or distributed under this quality management system

