

HFDC-24FIBER Enclosure for 24 Fiber Cable Installation

Bulletin 7860418 Revision B Page 1 of 2

The HFDC is an environmentally sealed enclosure for fiber management system that provides the function of LC trunk and jumper cable connection in the outside plant network. The closure is sealed with gel for longitudinal seal and features a wrap around gel block for cable sealing.

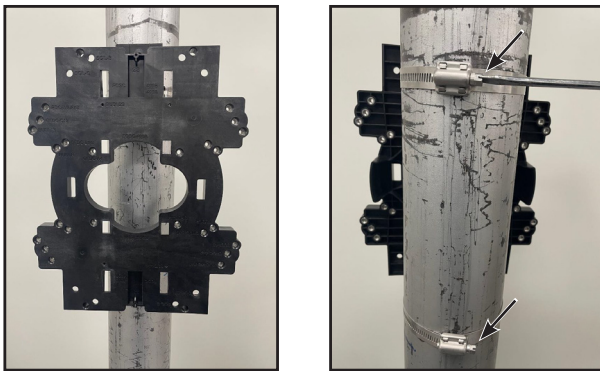
Cable diameters:

4 trunk ports: up to 17.5mm

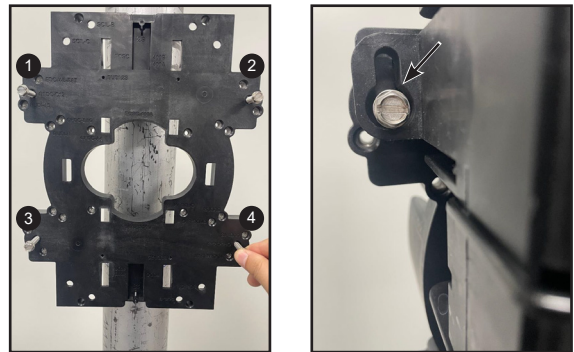
12 jumper ports: up to 5.5mm



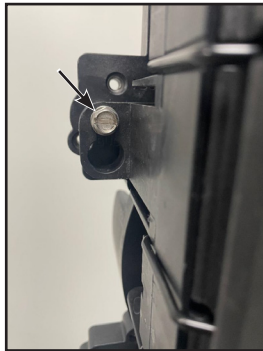
- 1** Install the bracket on the pole using two provided metal banding clamps. Tighten the clamp to the recommended torque of 2 N-m.



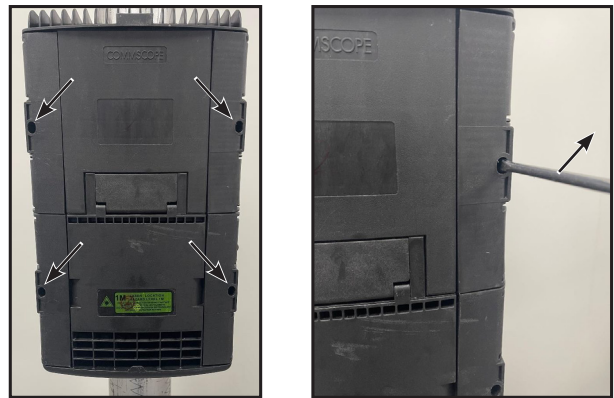
- 2** Pre-Install the bolts on the bracket from hardware kit provided in 4 locations, use two holes marked OFDC-012 and their direct opposite holes. Leave enough thread exposed for the HFDC enclosure to slide into place.



- 3** Lift the HFDC enclosure onto the screws and pull down to drop into place. Loosen bolts if enclosure isn't fully seated. Tighten the bolts to the recommended torque of 2 N-m.



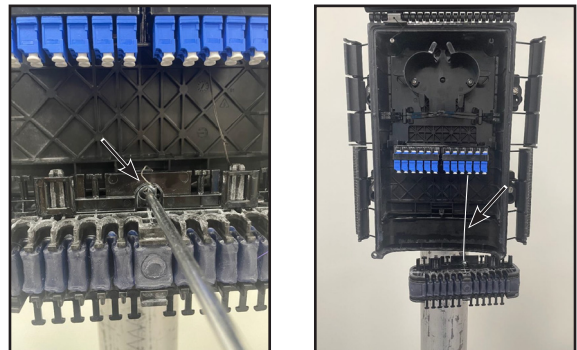
- 4** Use a screwdriver to open the four enclosure latches.



- 5** Open the enclosure cover and slide the pre-installed wedge into the hinge to hold the cover open during installation.



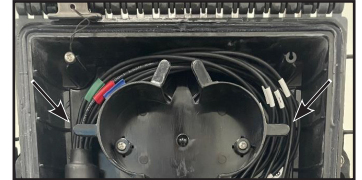
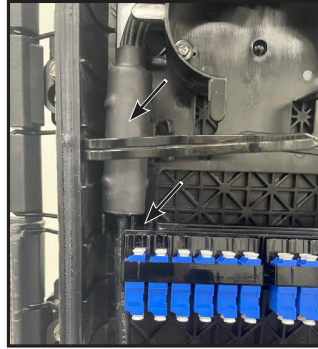
- 6** Loosen the screw on the gel gland and remove. The gland is tethered to the enclosure for safety.



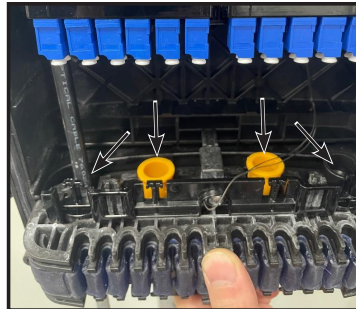
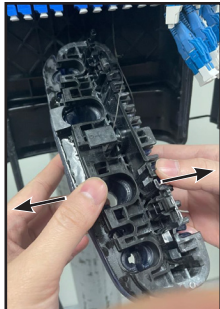
HFDC Fiber Box for 24 Fiber Cable Installation

Bulletin 7860418 Revision B Page 2 of 2

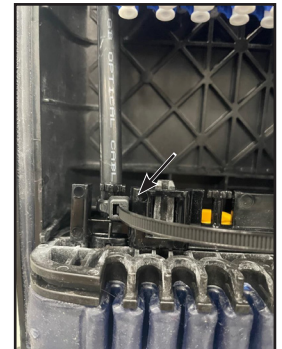
- 7** Pull the ends of the two pre-installed cable ties from under the retaining clip. Install the fiber trunk cable with the transition tube on the base tray as shown. Do not leave a large gap between the tube and fiber adapter. Tighten the tie wraps to secure the trunk cable and remove any extra length ensuring no sharp edges remain. Place fiber breakout inside of the retention clips.



- 8** Separate the gel pieces. Cut cable tie and remove sealing plug from the far left cavity and install the trunk cable. Remove additional plugs and install cables if required. Press the removed gel piece back into place and re-install the gel gland on the HFDC base. Tighten the screw with the recommended torque of 2 N-m.



- 9** Use one of the provided cable tie to fix the trunk cable to the gel gland and remove any extra length ensuring no sharp edges remain.



- 10** Connect the trunk DLC connectors into the adapter plate.



- 11** Install the output jumpers by connecting the DLC connectors and ensure that the cable is inside the gel. Close all latches using a screwdriver to complete the installation. If maintenance is required, just the bottom half of the cover can be accessed. It can also be held in an open position by hooking to a tab on the top as shown.



CommScope

3642 E US Highway 70, Claremont, NC 28610 USA
(828) 324-2200 (800) 982-1708
www.commscope.com

Technical Support

+1 888 297 6433, Option 3 (Toll Free US and Canada)
+1 828 323 4220, Option 3 (local)
<https://www.commscope.com/wisupport> (open a ticket)

Notice: CommScope disclaims any liability or responsibility for the results of improper or unsafe installation, inspection, maintenance, or removal practices.

Aviso: CommScope no acepta ninguna obligación ni responsabilidad como resultado de prácticas incorrectas o peligrosas de instalación, inspección, mantenimiento o retiro.

Avis: CommScope décline toute responsabilité pour les conséquences de procédures d'installation, d'inspection, d'entretien ou de retrait incorrectes ou dangereuses.

Hinweis: CommScope lehnt jede Haftung oder Verantwortung für Schäden ab, die aufgrund unsachgemäßer Installation, Überprüfung, Wartung oder Demontage auftreten.

Atenção: A CommScope abdica do direito de toda responsabilidade pelos resultados de práticas inadequadas e sem segurança de instalação, inspeção, manutenção ou remoção.

Avvertenza: CommScope declina eventuali responsabilità derivanti dall'esecuzione di procedure di installazione, ispezione, manutenzione e smontaggio improprie o poco sicure.

注意: CommScope 公司申明對於不恰當或不安全的安裝、檢驗、維修或拆卸操作所導致的後果不負任何義務和責任