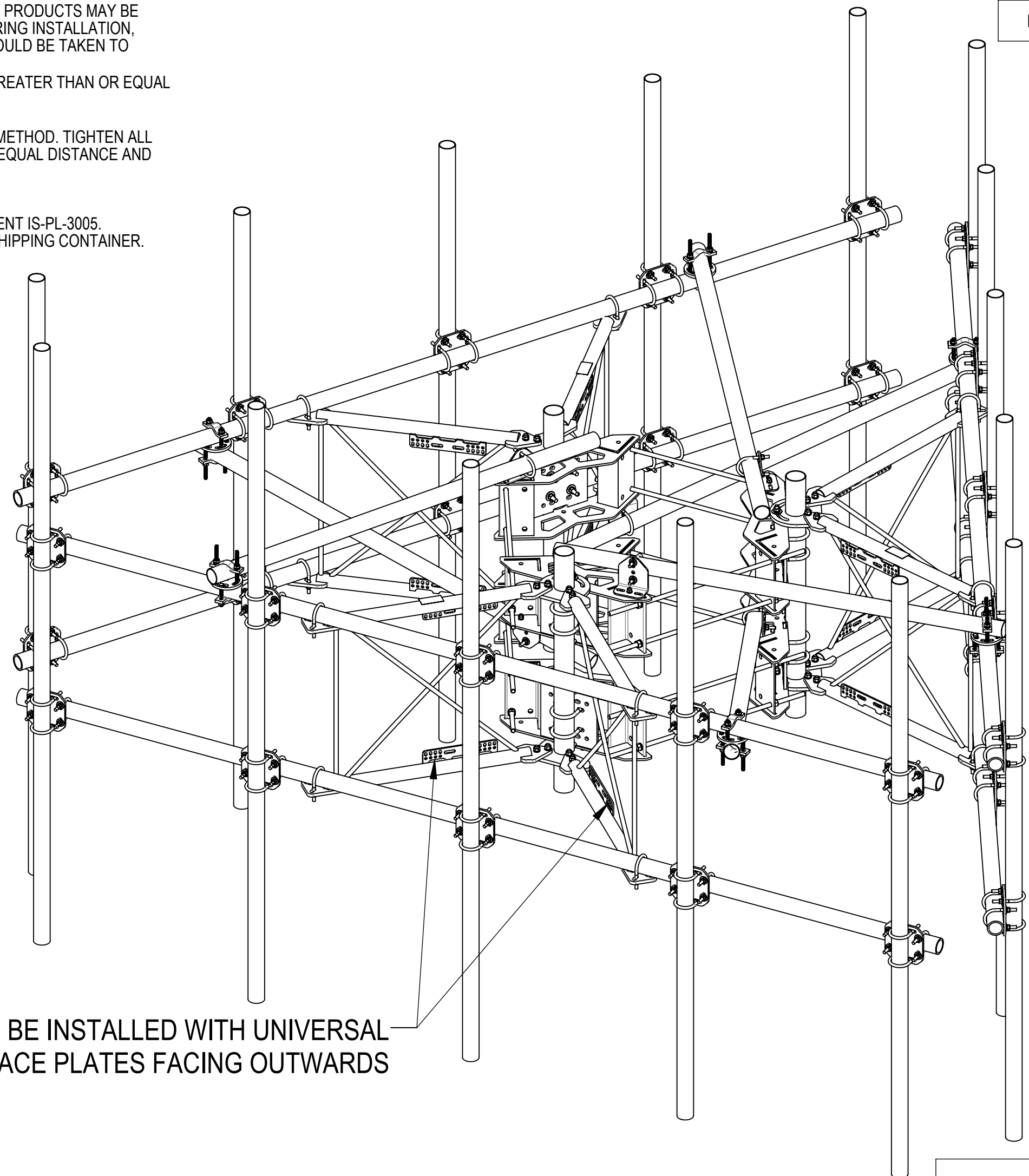


- 1.0 GENERAL NOTES
 - 1.1 ALL METRIC DIMENSIONS ARE IN BRACKETS [X. X]
 - 1.2 FOR PATENT INFO: <https://www.cs-pat.com>
- 2.0 DESIGN NOTES
 - 2.1 ANY HAZARDS OR OBSTRUCTIONS TO THE CLIMBING FACILITY AND SAFETY CLIMB MUST BE IDENTIFIED PRIOR TO INSTALLING THE APPURTENANCE. ADDITIONAL PRODUCTS MAY BE REQUIRED TO MAINTAIN THE INTEGRITY OF THE SAFETY CLIMB. DURING INSTALLATION, TEMPORARY AND/OR PERMANENT PRECAUTIONARY MEASURES SHOULD BE TAKEN TO PRESERVE THE CLIMBING FACILITY AND/OR SAFETY CLIMB.
 - 2.2 FITS MONOPOLES 38" TO 50" OD. MONOPOLE DIAMETER MUST BE GREATER THAN OR EQUAL TO 38" TO MEET ANTENNA TO ANTENNA CORNER SPACING OF >24".
- 3.0 MANUFACTURING/SPECIAL REQUIREMENTS
 - 3.1 TIGHTEN ALL BOLTS SECURING FLAT PLATES BY THE TURN-OF-NUT METHOD. TIGHTEN ALL U-BOLTS USING TURN-OF-NUT METHOD WITH ATTENTION TO LEAVE EQUAL DISTANCE AND EQUAL FORCE ON EACH LEG OF THE U-BOLT.
- 4.0 TEST
- 5.0 PACKAGING
 - 5.1 PACKAGING SHALL MEET COMMScope REQUIREMENTS PER DOCUMENT IS-PL-3005.
 - 5.2 PRINTED DOCUMENT TO BE PLACED INSIDE POLYBAG AND THEN IN SHIPPING CONTAINER.
 - 5.3 EXTRA HARDWARE MAY BE SUPPLIED, BAGGED AND SHIPPED.

REVISIONS			
REV.	DESCRIPTION	DATE	APPROVED
A	INITIAL RELEASE	JL1183 18FEB24	CB1094 40188553CMO
B	SFG2292-00 WAS SFG2278; ADDED SHEET 4	RY1002 28NOV24	YZ1080 40209667CMO



SHOULD BE INSTALLED WITH UNIVERSAL INTERFACE PLATES FACING OUTWARDS

COMMScope, INC. OF NORTH CAROLINA

TOLERANCES		SAP MATERIAL MASTER															
0 PLACE X[X] ± 0.25[6.3]	2 PLACE .XX[X] ± 0.06[1.5]	MCG22HDX15-15-WLL															
1 PLACE X[X] ± 0.12[3.0]	ANGLES ± 2°																
FINISH		MATERIAL															
UNLESS OTHERWISE SPECIFIED DIMENSIONS ARE IN INCHES INTERPRET PER ANSI Y 14.5M-1994		MP, 15' SF KIT OF 3 W/COLLAR, AP															
<table border="1"> <thead> <tr> <th>NAME</th> <th>DATE</th> <th>TITLE</th> </tr> </thead> <tbody> <tr> <td>CE JL1183</td> <td>18FEB24</td> <td rowspan="5">MP, 15' SF KIT OF 3 W/COLLAR, AP</td> </tr> <tr> <td>RW RY1002</td> <td>12/03/2024</td> </tr> <tr> <td>AD YZ1080</td> <td>12/04/2024</td> </tr> <tr> <td>RE YMENG</td> <td>12/17/2024</td> </tr> <tr> <td>ECN 40209667CMO</td> <td></td> </tr> </tbody> </table>		NAME	DATE	TITLE	CE JL1183	18FEB24	MP, 15' SF KIT OF 3 W/COLLAR, AP	RW RY1002	12/03/2024	AD YZ1080	12/04/2024	RE YMENG	12/17/2024	ECN 40209667CMO		SCALE DOCUMENT NO.	
NAME	DATE	TITLE															
CE JL1183	18FEB24	MP, 15' SF KIT OF 3 W/COLLAR, AP															
RW RY1002	12/03/2024																
AD YZ1080	12/04/2024																
RE YMENG	12/17/2024																
ECN 40209667CMO																	
		1:20 MCG22HDX15-15-WLL															
SIZE Auth Group INSL		MODEL DRAWING															
C		VERSION STATUS REVISION VERSION STATUS REVISION															
		01 RE B 01 RE B															
		SHEET 1 OF 5															

DENSITY	lbs/in ³
MASS	2596.41 lbs
VOLUME	10931.20 in ³
SURFACE AREA	99323.02 in ²
HEIGHT	120"
LENGTH	180"
WIDTH	84"

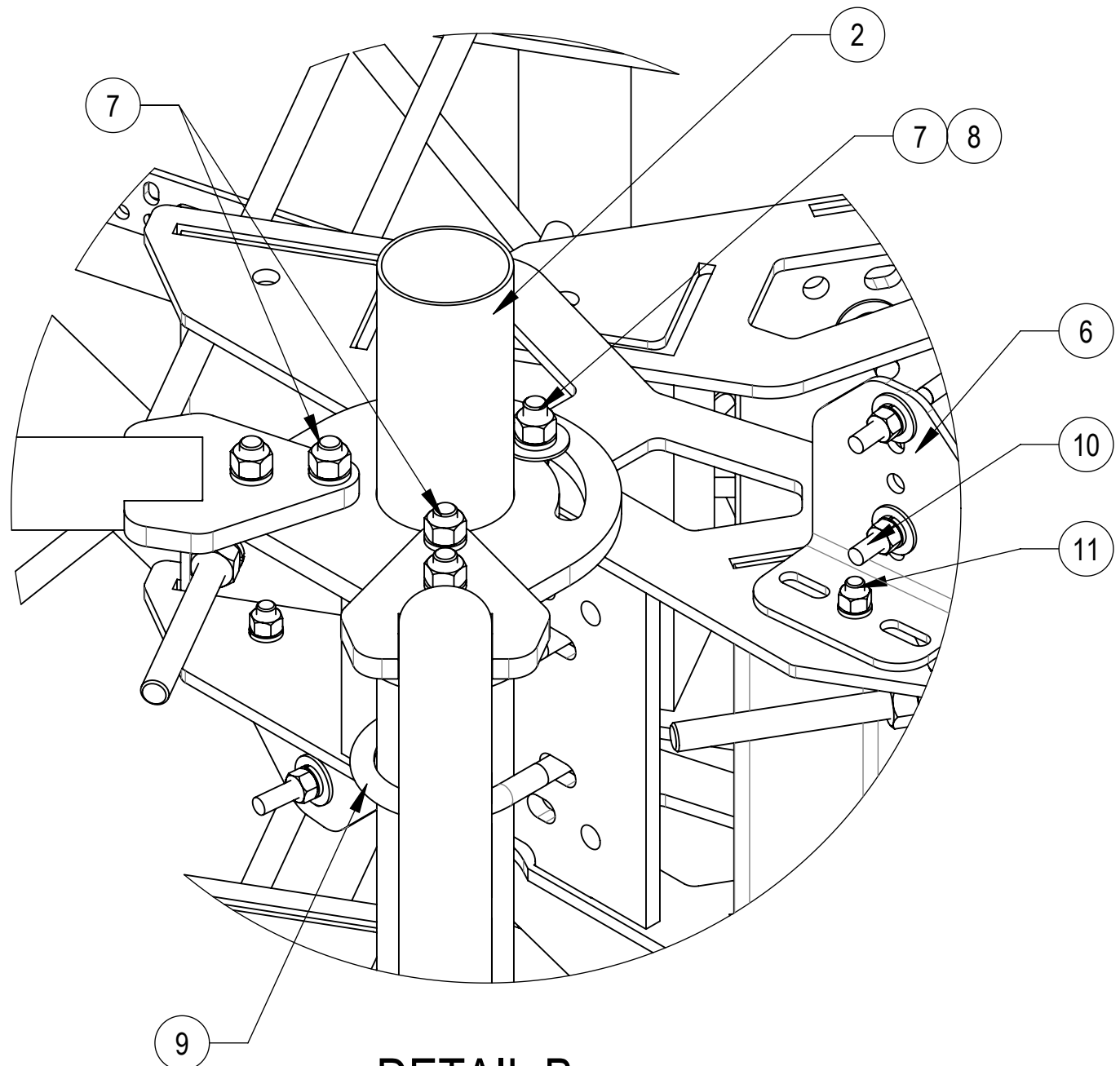
4 3 2 1

D

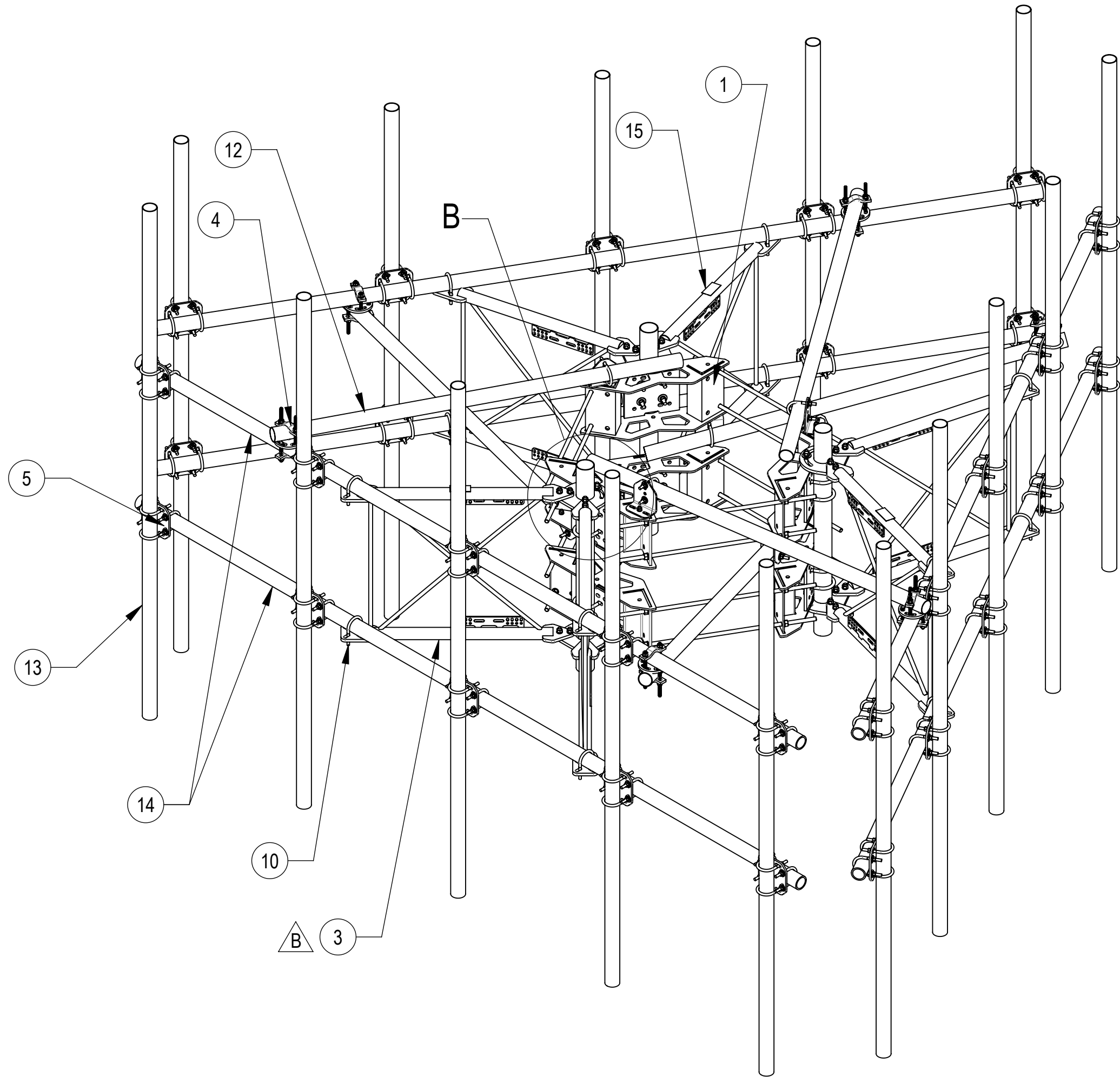
C

B

A



DETAIL B
SCALE 1 : 4

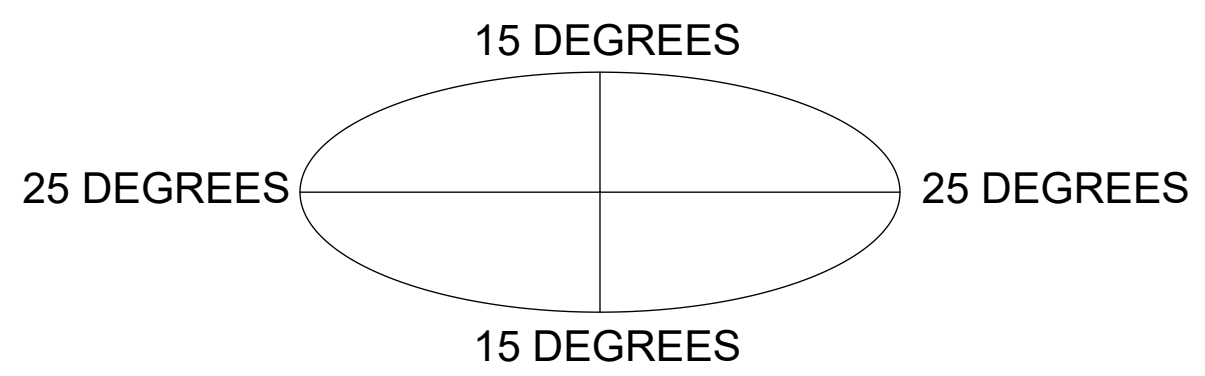


TOP
↓
BOTTOM

COMPONENT PART NUMBERS PROVIDED FOR ASSEMBLY PURPOSES;
INDIVIDUAL COMPONENTS MAY BE SHIPPED AS PARTS WITHIN AN INCLUDED KIT.

ITEM	PART NO.	DESCRIPTION	QTY.	WEIGHT	NOTE NO.
1	MC-RM1550-3	15" - 50" OD RINGMOUNT	2	229.90 LBS	
2	SFG2270	BACK VERTICAL ARM MOUNT	3	36.96 LBS	
3	SFG2292-00	WELDMENT, V-ARM, SECTOR FRAME 22	6	49.69 LBS	△B
4	XP-R	CROSSOVER PLATE, ROUND, UP TO 3.5" OD	6	6.20 LBS	
5	XP-2525	CROSSOVER PLATE KIT, 2-7/8 OD X 2-7/8 OD	30	8.37 LBS	
6	XAU01	ANGLE, CROSSOVER, 1.9-3.5" X 1.9-3.5" OD	6	2.98 LBS	
7	GB-05225	5/8" X 2-1/4" GALV BOLT KIT	30	0.28 LBS	
8	GWF-05	5/8" GALV FLAT WASHER, 1.7OD	6	0.06 LBS	
9	GUB-53560	5/8" X 3-5/8" X 6" GALV U-BOLT	12	1.30 LBS	
10	GUB-4352	1/2" X 3" X 5-1/4" GALV U-BOLT	18	0.71 LBS	
11	GB-04145	1/2" X 1-1/2" GALV BOLT KIT	6	0.13 LBS	
12	MT546084120	2.88" OD X 84" LONG PIPE	6	24.81 LBS	
13	MT546120120	PIPE, 2.875"OD X 120"	15	35.44 LBS	
14	MT546180276	PIPE, 2.875"OD X 180"	6	115.33 LBS	
15	SFG2255	LABEL, SFG22HDX	3	0.04 LBS	

ALLOWABLE TIEBACK ANGLE
±15 DEGREES VERTICAL
±25 DEGREES HORIZONTAL



© 2024 CommScope, Inc. Confidential

COMMSCOPE, INC. OF NORTH CAROLINA				
TITLE MP, 15' SF KIT OF 3 W/COLLAR, AP				
SIZE C	SCALE 1:20	DOCUMENT NO. MCG22HDX15-15-WLL		
DRAWING		VERSION	STATUS	REVISION
SHEET 2 OF 5		01	RE	B

4

3

2

1

4

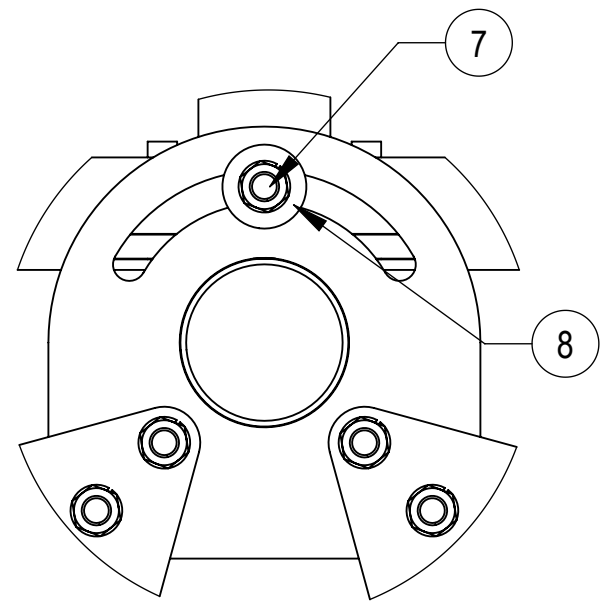
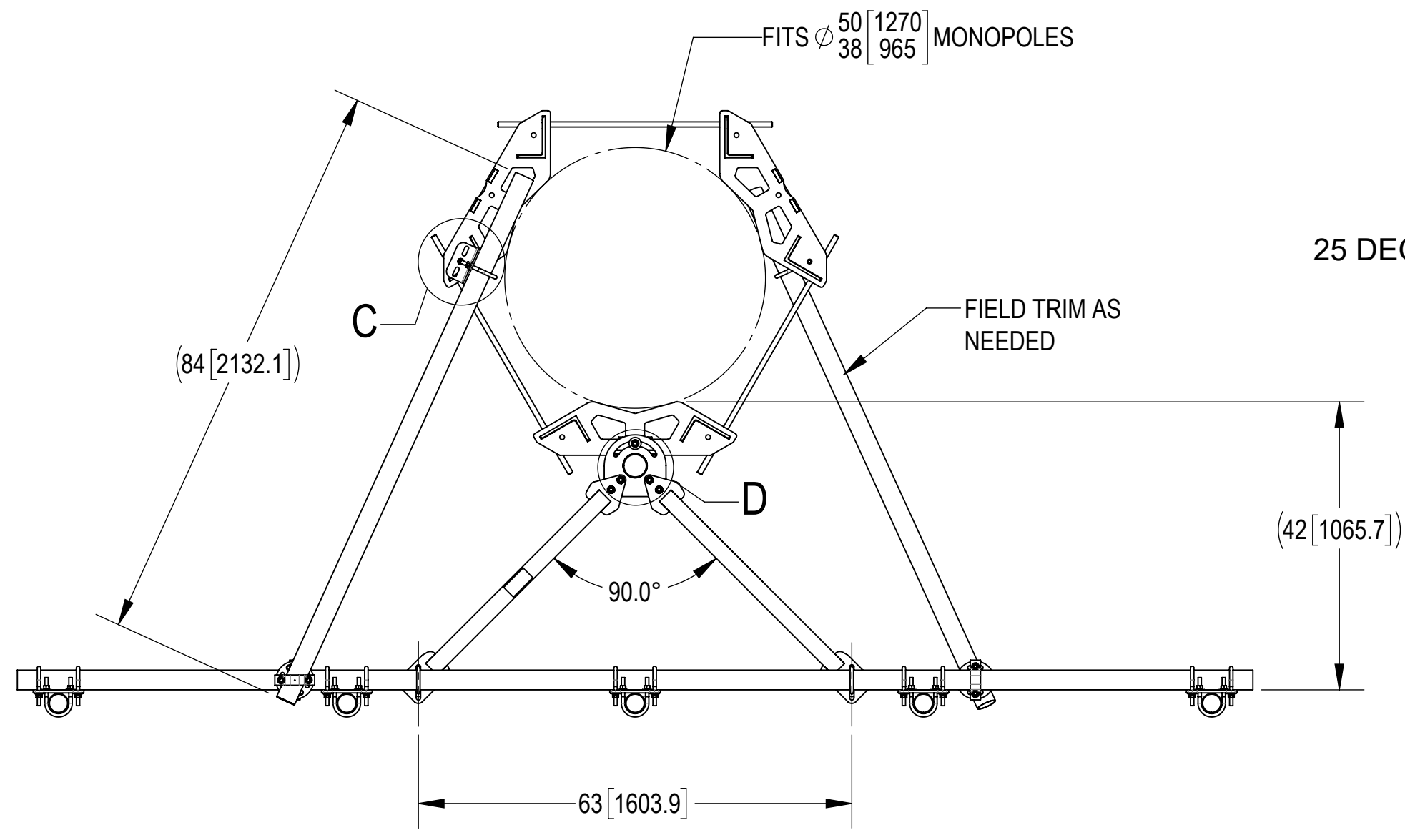
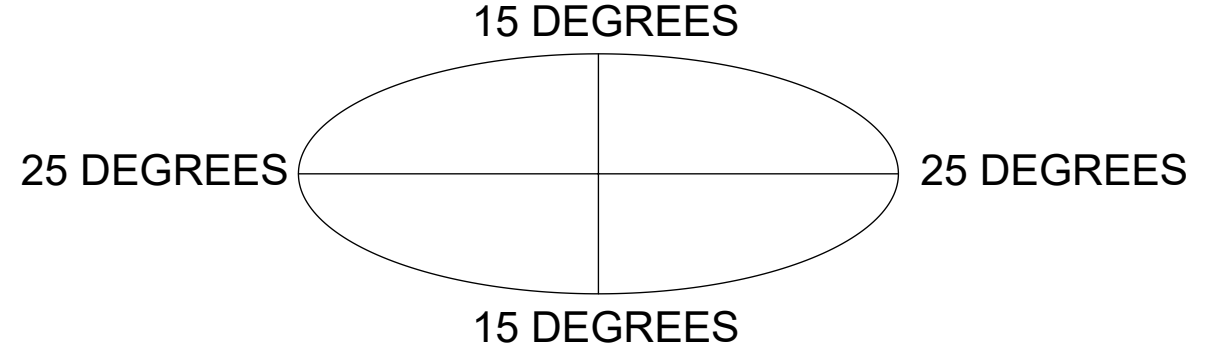
3

2

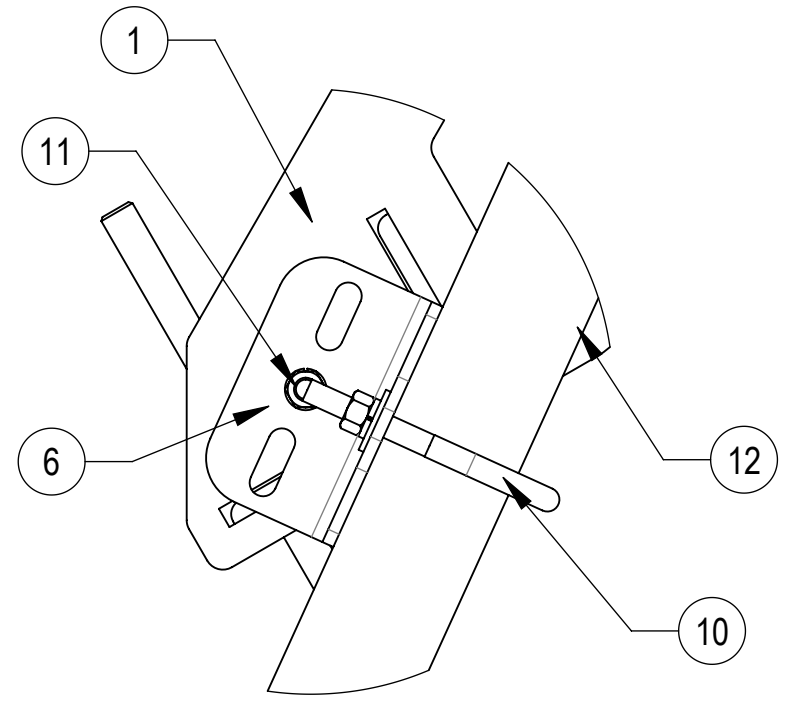
1

ALLOWABLE TIEBACK ANGLE

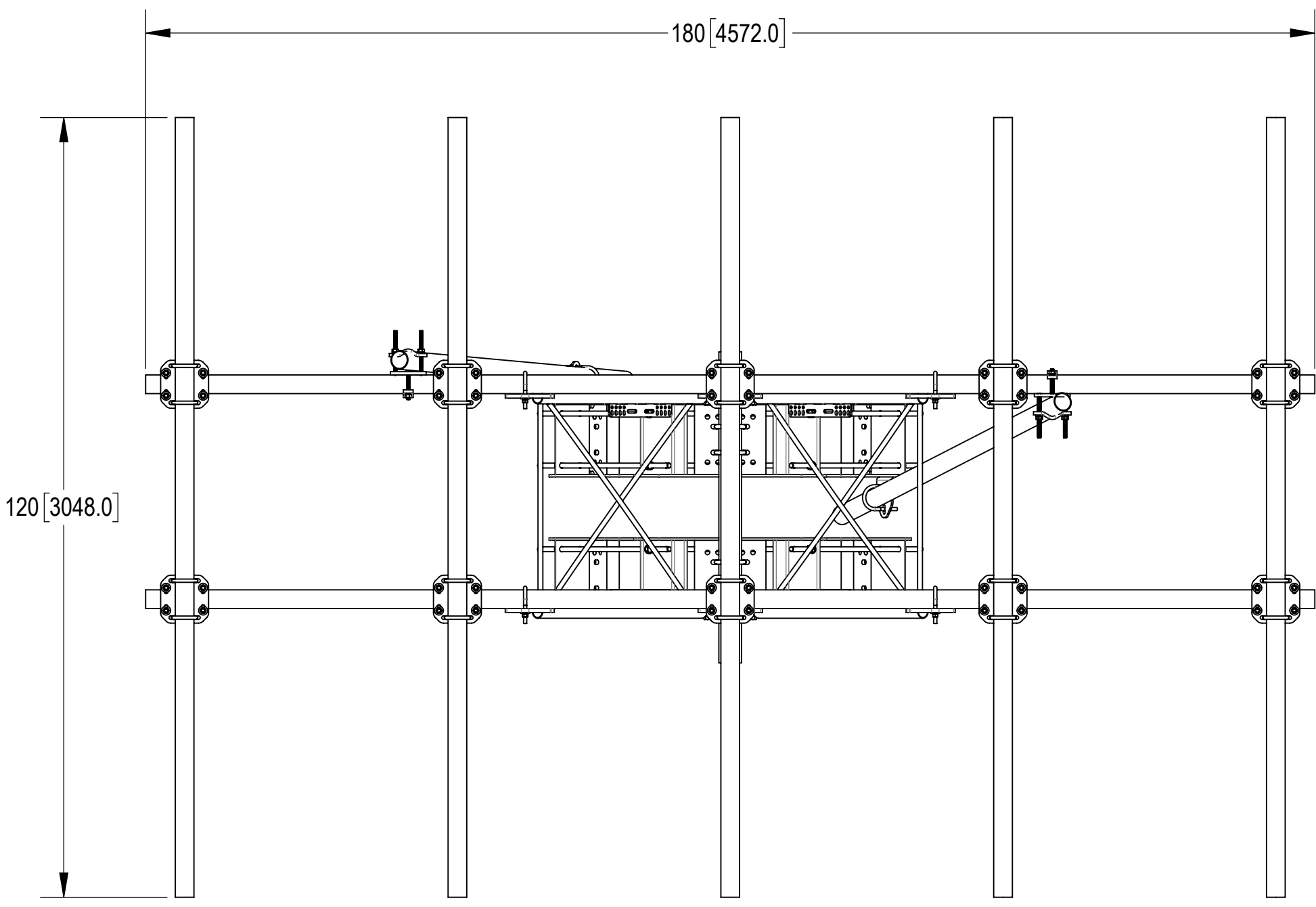
±15 DEGREES VERTICAL
±25 DEGREES HORIZONTAL



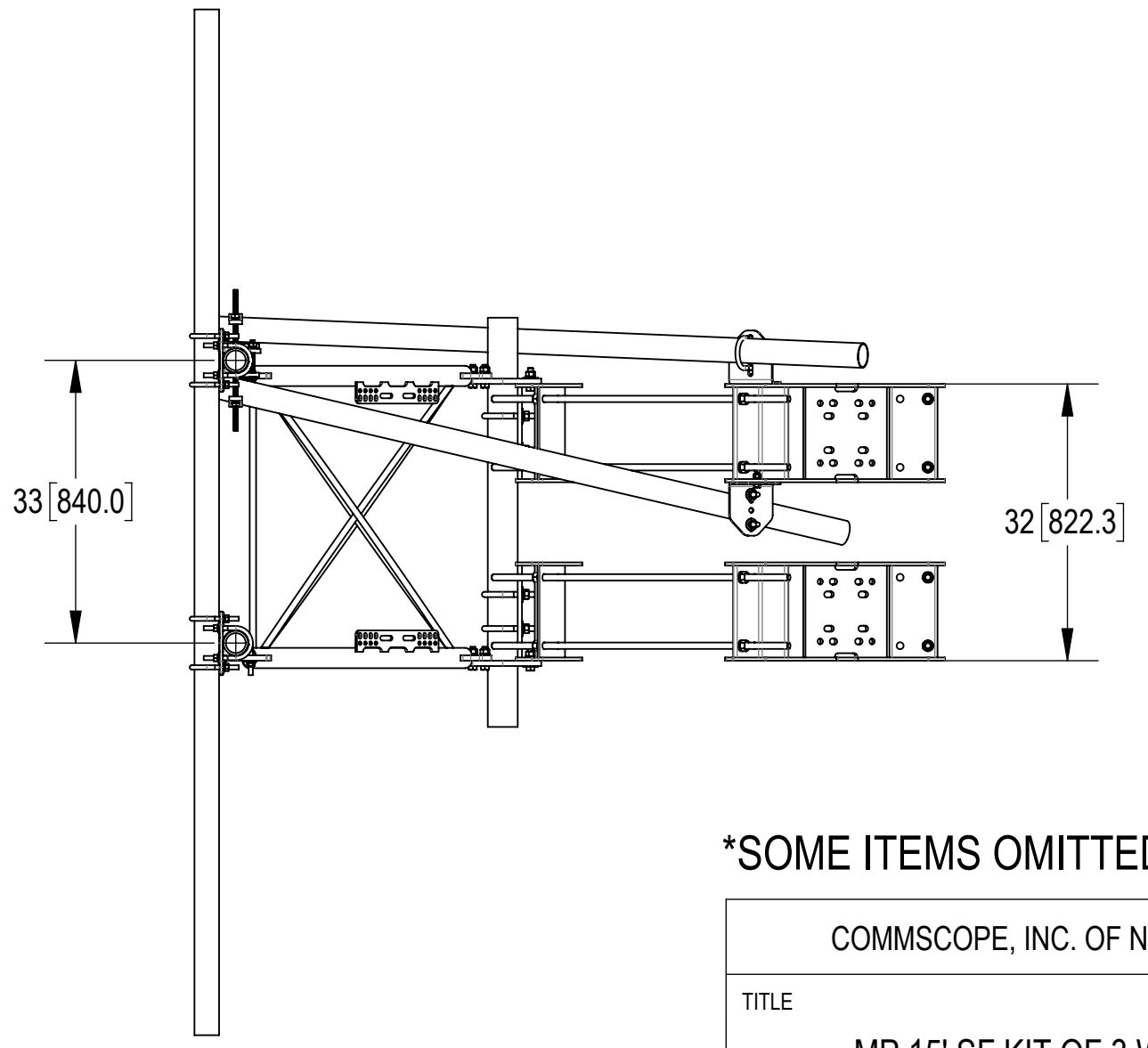
DETAIL D
SCALE 1 : 4



DETAIL C
SCALE 1 : 4



TOP
BOTTOM



SOME ITEMS OMITTED FOR CLARITY

COMMSCOPE, INC. OF NORTH CAROLINA				
TITLE MP, 15' SF KIT OF 3 W/COLLAR, AP				
SIZE C	SCALE 1:20	DOCUMENT NO. MCG22HDX15-15-WLL		
		DRAWING		SHEET
		VERSION	STATUS	REVISION
		01	RE	B
				SHEET 3 OF 5

4

3

2

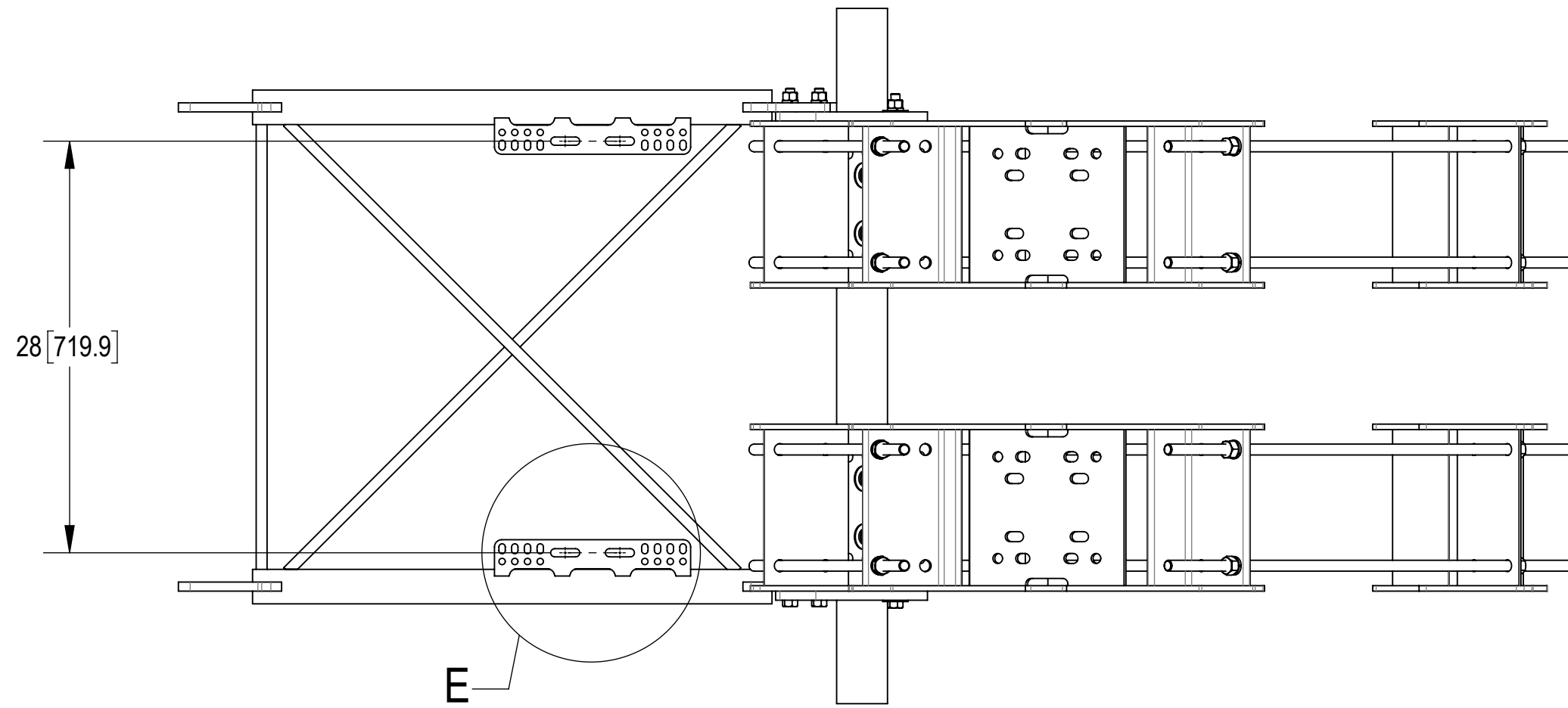
1

4

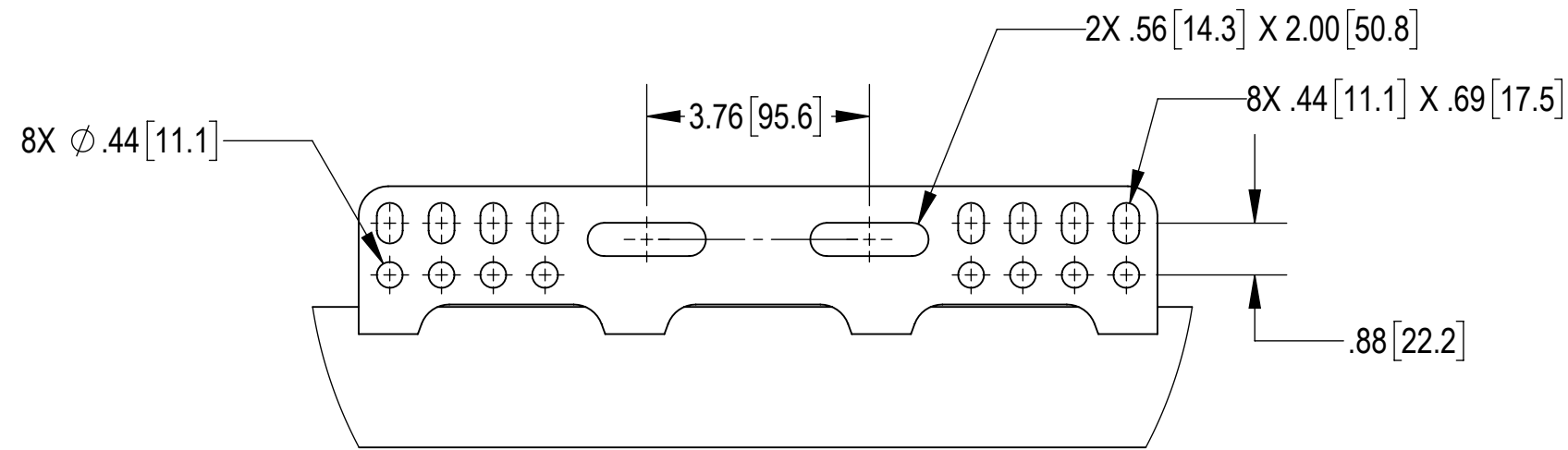
3

2

1



SIDE VIEW



DETAIL E
SCALE 1 : 3

COMMSCOPE, INC. OF NORTH CAROLINA

TITLE
MP,15' SF KIT OF 3 W/COLLAR,AP

SIZE C	SCALE 1:10	DOCUMENT NO. MCG22HDX15-15-WLL
------------------	----------------------	-----------------------------------

	DRAWING			SHEET 4 OF 5
	VERSION 01	STATUS RE	REVISION B	

4

3

2

1

D

D

C

C

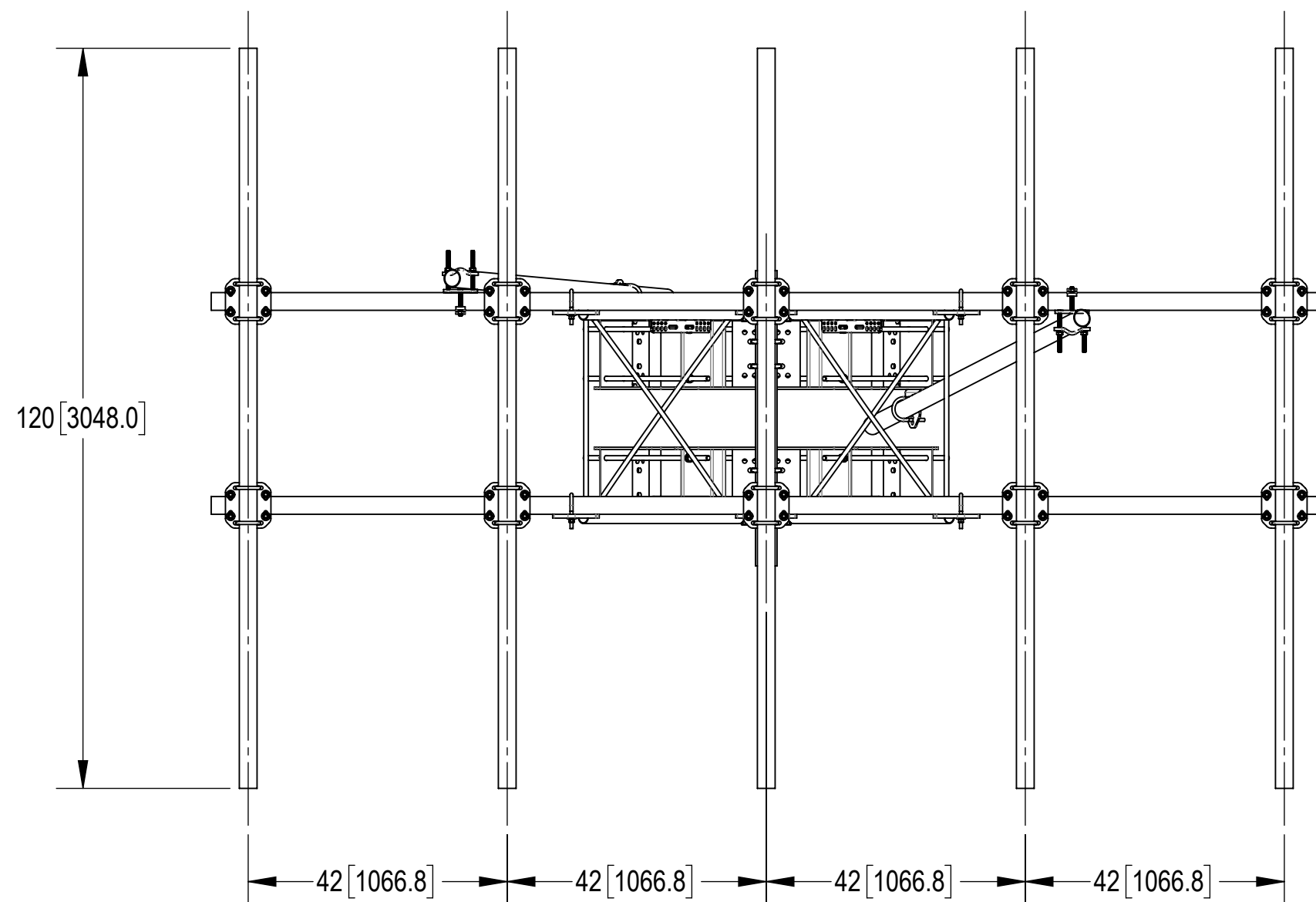
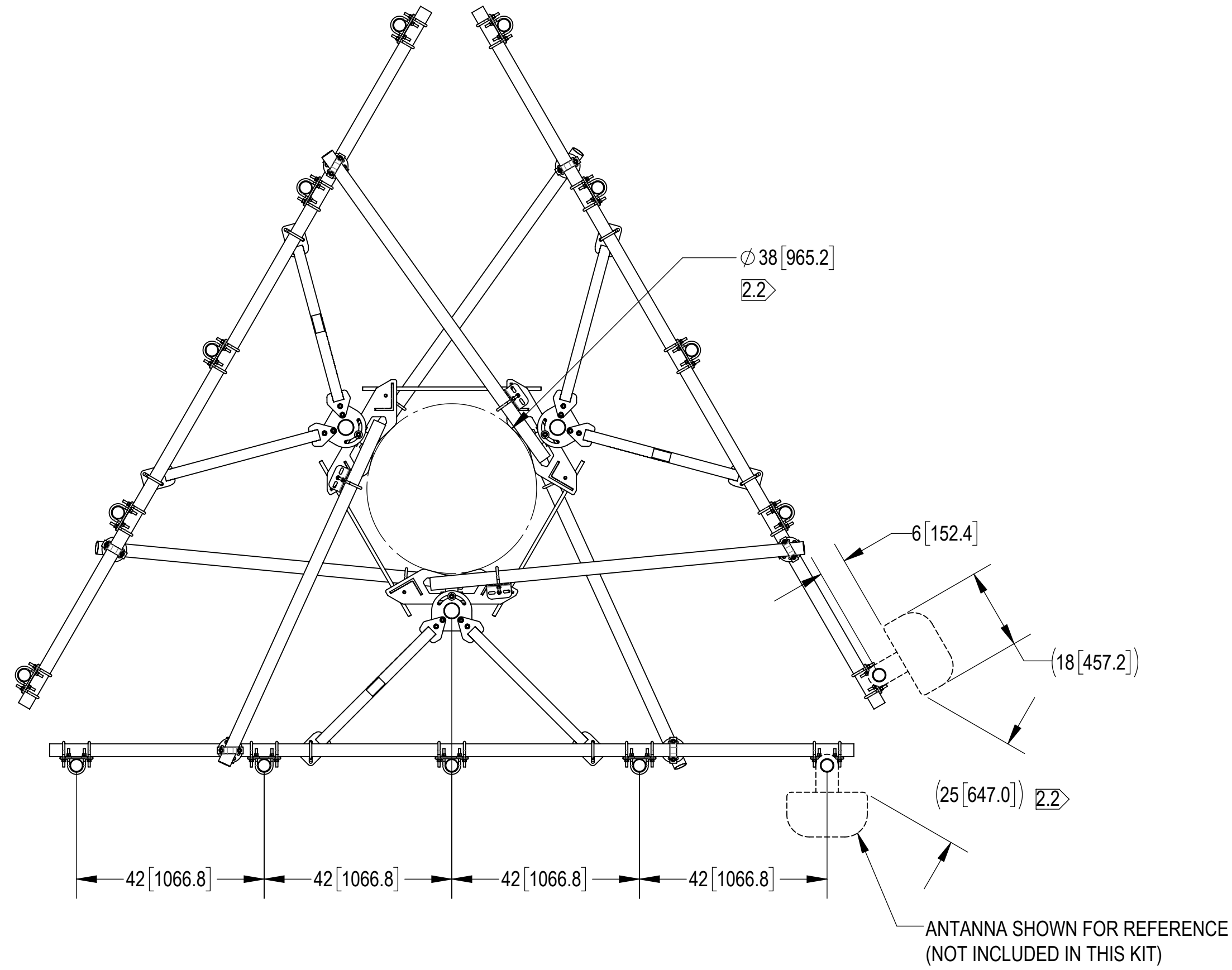
B

B

A

A

ANTENNA SPACING SHOWN



SOME ITEMS OMITTED FOR CLARITY

COMMSCOPE, INC. OF NORTH CAROLINA				
TITLE MP, 15' SF KIT OF 3 W/COLLAR, AP				
SIZE C	SCALE 1:24	DOCUMENT NO. MCG22HDX15-15-WLL		
		DRAWING		SHEET
		VERSION	STATUS	REVISION
		01	RE	B
				5 OF 5