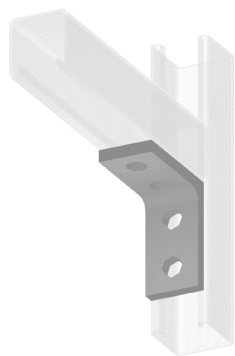


MT-495



1-5/8 in 90° Angle Fitting, 3/8 in, one-hole

- This item is now available as a custom product and is made to order

OBSOLETE

Product Classification

Product Type Square rail support component

Dimensions

Height 50.8 mm | 2.0 in
Inner Diameter 9.5 mm | 3/8 in
Length 76.2 mm | 3.0 in
Weight 0.3 kg | 0.7 lb
Width 152.4 mm | 6.0 in

General Specifications

Material Type Hot dip galvanized steel
Includes Splice
Mounting Square support rail
Package Quantity 1