

Adjustable Wall Mount for hollow walls, 6 in stand-off

## Product Classification

**Product Type** Wall mount kit

## Dimensions

**Height** 203.2 mm | 8.0 in  
**Length** 152.4 mm | 6.0 in  
**Pipe Outer Diameter** 2 3/8 in | 2 7/8 in | 3 1/2 in | 4 1/2 in  
**Weight** 31.1 kg | 68.6 lb  
**Width** 203.2 mm | 8.0 in

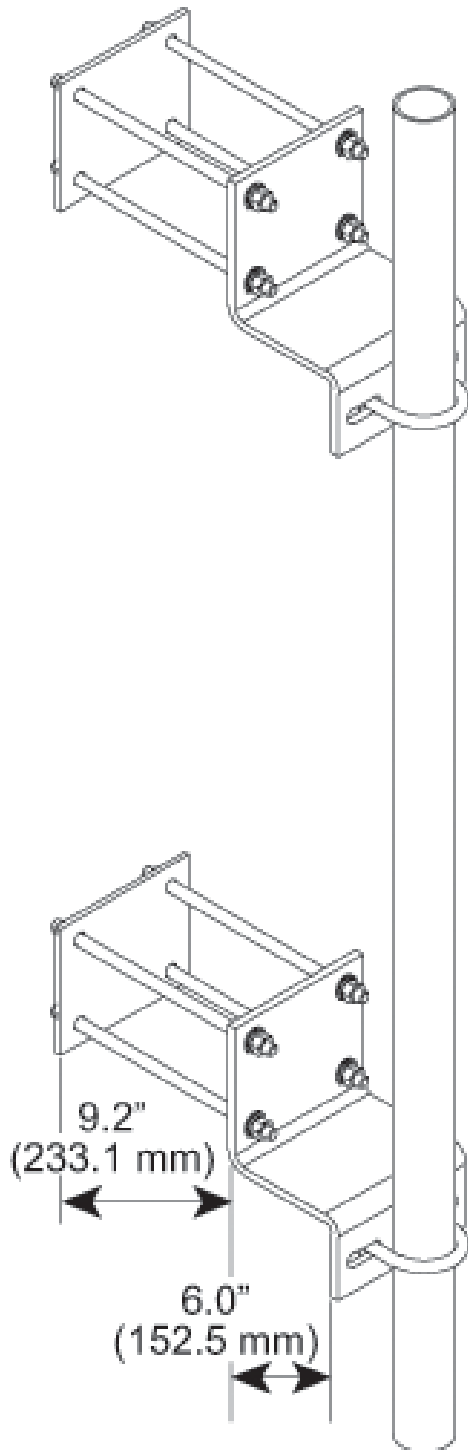
## Environmental Specifications

**Wind Rating** For Specifications, please contact [steelproducts@commscope.com](mailto:steelproducts@commscope.com) or call 800-255-1479

## General Specifications

**Mounting** Hollow walls  
**Includes** Backing plates or anchors | Wall brackets (2)  
**Material Type** Hot dip galvanized steel  
**Package Quantity** 2  
**Stand-off Distance** 152.4 mm | 6.0 in

## Outline Drawing



## Regulatory Compliance/Certifications

**Agency**

ISO 9001:2015

**Classification**

Designed, manufactured and/or distributed under this quality management system

**\* Footnotes****Wind Rating**

BWS—Base Wind Speed; FBC—Florida Building Code