

2UPX210B-T2



4-port multibeam antenna, 4x 694–896 MHz, 2x 37° HPBW, 2x RET with manual override.

- Integrated Internal Remote Electrical Tilt (RET), with independent control of electrical tilt with manual override on both beams
- Each port has an integrated bias tee, and each beam has its own smart switch that automatically selects between bias tee or AISG inputs according to a predetermined priority table
- Single panel design supporting two separate beams perfectly optimized at horizontal pointing angles of +27 degrees and –27 degrees from boresight

Electrical Specifications

| Frequency Band, MHz | 694–806 | 806–896 |
|--|-------------|-------------|
| Gain, dBi | 17.9 | 18.7 |
| Beam Centers, Horizontal, degrees | ±27 | ±27 |
| Beamwidth, Horizontal, degrees | 39 | 36 |
| Beamwidth, Vertical, degrees | 9.6 | 8.4 |
| Beam Tilt, degrees | 0–10 | 0–10 |
| USLS (First Lobe), dB | 21 | 21 |
| Front-to-Back Ratio at 180°, dB | 34 | 40 |
| Isolation, Cross Polarization, dB | 25 | 25 |
| Isolation, Inter-band, dB | 18 | 18 |
| VSWR Return Loss, dB | 1.43 15.0 | 1.43 15.0 |
| PIM, 3rd Order, 2 x 20 W, dBc | -150 | -150 |
| Input Power per Port at 50°C, maximum, watts | 200 | 200 |
| Polarization | ±45° | ±45° |
| Impedance | 50 ohm | 50 ohm |

Electrical Specifications, BASTA*

| Frequency Band, MHz | 694–806 | 806–896 |
|---|---|---|
| Gain by all Beam Tilts, average, dBi | 17.6 | 18.5 |
| Gain by all Beam Tilts Tolerance, dB | ±0.6 | ±0.3 |
| Gain by Beam Tilt, average, dBi | 0 ° 17.6 5 ° 17.6 10 ° 17.6 | 0 ° 18.5 5 ° 18.5 10 ° 18.4 |
| Beamwidth, Horizontal Tolerance, degrees | ±1.8 | ±1.6 |
| Beamwidth, Vertical Tolerance, degrees | ±0.7 | ±0.4 |
| USLS, beampeak to 20° above beampeak, dB | 21 | 19 |
| Front-to-Back Total Power at 180° ± 30°, dB | 25 | 29 |
| CPR at Boresight, dB | 20 | 19 |

* CommScope® supports NGMN recommendations on Base Station Antenna Standards (BASTA). To learn more about the benefits of BASTA, [download the whitepaper Time to Raise the Bar on BSAs.](#)

2UPX210B-T2

General Specifications

| | |
|-----------------------------------|---------------|
| Operating Frequency Band | 694 – 896 MHz |
| Antenna Type | Multibeam |
| Band | Single band |
| Performance Note | Outdoor usage |
| Total Input Power, maximum | 700 W @ 50 °C |

Mechanical Specifications

| | |
|--|--|
| RF Connector Quantity, total | 4 |
| RF Connector Quantity, low band | 4 |
| RF Connector Interface | 7-16 DIN Female |
| Grounding Type | RF connector body grounded to reflector and mounting bracket |
| Radiator Material | Copper Low loss circuit board |
| Radome Material | Fiberglass, UV resistant |
| Reflector Material | Aluminum |
| RF Connector Location | Bottom |
| Wind Loading, maximum | 1497.0 N @ 150 km/h 336.5 lbf @ 150 km/h |
| Wind Speed, maximum | 200 km/h 124 mph |

Dimensions

| | |
|---|---------------------|
| Length | 2533.0 mm 99.7 in |
| Width | 640.0 mm 25.2 in |
| Depth | 235.0 mm 9.3 in |
| Net Weight, without mounting kit | 47.0 kg 103.6 lb |

Remote Electrical Tilt (RET) Information

| | |
|--|-----------------------------------|
| Input Voltage | 10–30 Vdc |
| Internal Bias Tee | Port 1 Port 2 Port 3 Port 4 |
| Internal RET | Low band (2) |
| Power Consumption, idle state, maximum | 2 W |
| Power Consumption, normal conditions, maximum | 13 W |
| Protocol | 3GPP/AISG 2.0 (Single RET) |
| RET Interface | 8-pin DIN Female 8-pin DIN Male |
| RET Interface, quantity | 1 female 2 male |

Packed Dimensions

| | |
|---------------|----------------------|
| Length | 2684.0 mm 105.7 in |
|---------------|----------------------|

2UPX210B-T2

| | |
|------------------------|--------------------|
| Width | 797.0 mm 31.4 in |
| Depth | 402.0 mm 15.8 in |
| Shipping Weight | 67.0 kg 147.7 lb |

Regulatory Compliance/Certifications

Agency

RoHS 2011/65/EU

ISO 9001:2015

China RoHS SJ/T 11364-2014

Classification

Designed, manufactured and/or distributed under this quality management system

Above Maximum Concentration Value (MCV)



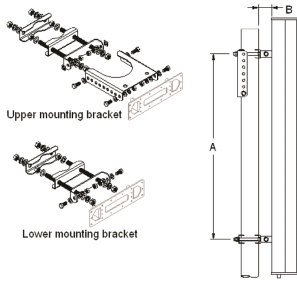
Included Products

T-029-GL-E — Adjustable Tilt Pipe Mounting Kit for 2.0"-4.5" (60-115mm) OD round members for panel antennas. Includes 2 clamp sets.

* Footnotes

Performance Note

Severe environmental conditions may degrade optimum performance



Adjustable Tilt Pipe Mounting Kit for 2.0"-4.5" (60-115mm) OD round members for panel antennas. Includes 2 clamp sets.

General Specifications

| | |
|-------------------------|---------------------|
| Application | Outdoor |
| Includes | Brackets Hardware |
| Package Quantity | 1 |

Mechanical Specifications

| | |
|------------------------|------------------|
| Color | Silver |
| Material Type | Galvanized steel |
| Mechanical Tilt | 0°-8° |

Dimensions

| | |
|-------------------------------------|----------------------|
| Antenna-to-Pipe Distance | 85.0 mm 3.3 in |
| Bracket-to-Bracket Distance | 1400.0 mm 55.1 in |
| Compatible Diameter, maximum | 115.0 mm 4.5 in |
| Compatible Diameter, minimum | 60.0 mm 2.4 in |
| Compatible Length, maximum | 2850.0 mm 112.2 in |
| Compatible Length, minimum | 1500.0 mm 59.1 in |
| Net Weight | 6.0 kg 13.2 lb |

Regulatory Compliance/Certifications

| | |
|----------------------------|--|
| Agency | Classification |
| RoHS 2011/65/EU | Compliant by Exemption |
| ISO 9001:2015 | Designed, manufactured and/or distributed under this quality management system |
| China RoHS SJ/T 11364-2014 | Above Maximum Concentration Value (MCV) |
| CE | Compliant with the relevant CE product directives |

