

# 2CPX208R-V3

4-port multibeam antenna, 4x 790–960 MHz, 2x 38° HPBW, 2x RET with manual override.



- Integrated Internal Remote Electrical Tilt (RET), with independent control of electrical tilt with manual override on all arrays
- Single panel design supporting two separate beams perfectly optimized at horizontal pointing angles of +27 degrees and –27 degrees from boresight

## Electrical Specifications

Frequency Band, MHz	790–890	890–960
Gain, dBi	18.1	18.6
Beam Centers, Horizontal, degrees	±27	±27
Beamwidth, Horizontal, degrees	40	35
Beamwidth, Vertical, degrees	10.0	9.1
Beam Tilt, degrees	0–10	0–10
USLS (First Lobe), dB	18	18
Null Fill, dB	-22	-22
Front-to-Back Ratio at 180°, dB	32	31
Isolation, Same Beam, dB	25	25
VSWR   Return Loss, dB	1.29   18.0	1.29   18.0
PIM, 3rd Order, 2 x 20 W, dBc	-150	-150
Input Power per Port, maximum, watts	300	300
Polarization	±45°	±45°
Impedance	50 ohm	50 ohm

## Electrical Specifications, BASTA\*

Frequency Band, MHz	790–890	890–960
Gain by all Beam Tilts, average, dBi	17.8	18.3
Gain by all Beam Tilts Tolerance, dB	±0.4	±0.3
Gain by Beam Tilt, average, dBi	0 °   17.9 5 °   17.9 10 °   17.8	0 °   18.4 5 °   18.4 10 °   18.1
Beamwidth, Horizontal Tolerance, degrees	±2.3	±2.2
Beamwidth, Vertical Tolerance, degrees	±0.5	±0.4
USLS, beampeak to 20° above beampeak, dB	21	22
Front-to-Back Total Power at 180° ± 30°, dB	23	20
CPR at Boresight, dB	23	21
CPR at Sector, dB	12	7

\* CommScope® supports NGMN recommendations on Base Station Antenna Standards (BASTA). To learn more about the benefits of BASTA, [download the whitepaper Time to Raise the Bar on BSAs](#).

## General Specifications

# 2CPX208R-V3

---

<b>Operating Frequency Band</b>	790 – 960 MHz
<b>Antenna Type</b>	Multibeam
<b>Band</b>	Single band
<b>Performance Note</b>	Outdoor usage

## Mechanical Specifications

<b>RF Connector Quantity, total</b>	4
<b>RF Connector Quantity, low band</b>	4
<b>RF Connector Interface</b>	7-16 DIN Female
<b>Color</b>	Light gray
<b>Grounding Type</b>	RF connector inner conductor and body grounded to reflector and mounting bracket
<b>Radiator Material</b>	Low loss circuit board
<b>Radome Material</b>	Polyester fiberglass pultrusion
<b>Reflector Material</b>	Aluminum
<b>RF Connector Location</b>	Bottom
<b>Wind Loading, frontal</b>	1,352.0 N @ 150 km/h   303.9 lbf @ 150 km/h
<b>Wind Loading, lateral</b>	228.0 N @ 150 km/h   51.3 lbf @ 150 km/h
<b>Wind Speed, maximum</b>	200 km/h   124 mph

## Dimensions

<b>Length</b>	2090.0 mm   82.3 in
<b>Width</b>	504.0 mm   19.8 in
<b>Depth</b>	118.0 mm   4.6 in
<b>Net Weight, without mounting kit</b>	32.5 kg   71.7 lb

## Remote Electrical Tilt (RET) Information

<b>Input Voltage</b>	10–30 Vdc
<b>Internal RET</b>	Low band (2)
<b>Power Consumption, idle state, maximum</b>	2 W
<b>Power Consumption, normal conditions, maximum</b>	13 W
<b>Protocol</b>	3GPP/AISG 2.0 (Single RET)
<b>RET Interface</b>	8-pin DIN Female   8-pin DIN Male
<b>RET Interface, quantity</b>	1 female   1 male

## Packed Dimensions

<b>Length</b>	2229.0 mm   87.8 in
<b>Width</b>	593.0 mm   23.3 in
<b>Depth</b>	209.0 mm   8.2 in

# 2CPX208R-V3

---

## Shipping Weight

45.5 kg | 100.3 lb

## Regulatory Compliance/Certifications

### Agency

RoHS 2011/65/EU  
ISO 9001:2015  
China RoHS SJ/T 11364-2014  
CE

### Classification

Compliant by Exemption  
Designed, manufactured and/or distributed under this quality management system  
Above Maximum Concentration Value (MCV)  
Compliant with the relevant CE product directives



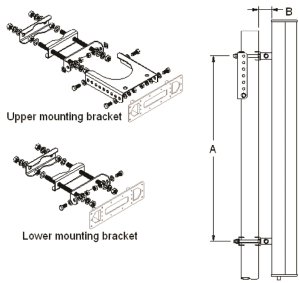
## Included Products

T-029-GL-E — Adjustable Tilt Pipe Mounting Kit for 2.0"-4.5" (60-115mm) OD round members for panel antennas. Includes 2 clamp sets.

## \* Footnotes

### Performance Note

Severe environmental conditions may degrade optimum performance



Adjustable Tilt Pipe Mounting Kit for 2.0"-4.5" (60-115mm) OD round members for panel antennas. Includes 2 clamp sets.

## General Specifications

<b>Application</b>	Outdoor
<b>Includes</b>	Brackets   Hardware
<b>Package Quantity</b>	1

## Mechanical Specifications

<b>Color</b>	Silver
<b>Material Type</b>	Galvanized steel
<b>Mechanical Tilt</b>	0°–8°

## Dimensions

<b>Antenna-to-Pipe Distance</b>	85.0 mm   3.3 in
<b>Bracket-to-Bracket Distance</b>	1400.0 mm   55.1 in
<b>Compatible Diameter, maximum</b>	115.0 mm   4.5 in
<b>Compatible Diameter, minimum</b>	60.0 mm   2.4 in
<b>Compatible Length, maximum</b>	2850.0 mm   112.2 in
<b>Compatible Length, minimum</b>	1500.0 mm   59.1 in
<b>Net Weight</b>	6.0 kg   13.2 lb

## Regulatory Compliance/Certifications

<b>Agency</b>	<b>Classification</b>
RoHS 2011/65/EU	Compliant by Exemption
ISO 9001:2015	Designed, manufactured and/or distributed under this quality management system
China RoHS SJ/T 11364-2014	Above Maximum Concentration Value (MCV)
CE	Compliant with the relevant CE product directives

