

5UPX0805F



10-port multibeam antenna, 10x 698–894 MHz, 5 x 13.5° HPBW, fixed electrical tilt. Ships with two T-041-GL-E mounting kits.

Electrical Specifications

Frequency Band, MHz	698–894
Gain, dBi	20.6
Beamwidth, Horizontal, degrees	13
Beamwidth, Vertical, degrees	17.1
Beam Tilt, degrees	6
USLS (First Lobe), dB	18
Front-to-Back Ratio at 180°, dB	35
CPR at Boresight, dB	12
Isolation, Cross Polarization, dB	25
VSWR Return Loss, dB	1.43 15.0
PIM, 3rd Order, 2 x 20 W, dBc	-150
Input Power per Port, maximum, watts	300
Polarization	±45°
Impedance	50 ohm

Electrical Specifications, BASTA*

Frequency Band, MHz	698–894
Gain by all Beam Tilts, average, dBi	19.6
Gain by all Beam Tilts Tolerance, dB	±1.9
Beamwidth, Horizontal Tolerance, degrees	±2.4
Beamwidth, Vertical Tolerance, degrees	±3.4
USLS, beampeak to 20° above beampeak, dB	17
Front-to-Back Total Power at 180° ± 30°, dB	33
CPR at Boresight, dB	12

* CommScope® supports NGMN recommendations on Base Station Antenna Standards (BASTA). To learn more about the benefits of BASTA, [download the whitepaper Time to Raise the Bar on BSAs](#).

General Specifications

Operating Frequency Band	698 – 894 MHz
Antenna Type	Multibeam
Band	Single band
Performance Note	Outdoor usage

Mechanical Specifications

RF Connector Quantity, total	10
RF Connector Quantity, low band	10

5UPX0805F

RF Connector Interface	7-16 DIN Female
Grounding Type	RF connector inner conductor and body grounded to reflector and mounting bracket
Radome Material	Polyester fiberglass pultrusion
RF Connector Location	Bottom
Wind Loading, maximum	2700.0 N @ 160 km/h 607.0 lbf @ 160 km/h
Wind Speed, maximum	140 km/h 87 mph

Dimensions

Length	1617.0 mm 63.7 in
Width	1574.0 mm 62.0 in
Depth	282.0 mm 11.1 in
Net Weight, without mounting kit	85.0 kg 187.4 lb

Packed Dimensions

Length	1760.0 mm 69.3 in
Width	1670.0 mm 65.7 in
Depth	440.0 mm 17.3 in
Shipping Weight	169.0 kg 372.6 lb

Regulatory Compliance/Certifications

Agency

RoHS 2011/65/EU
ISO 9001:2015
China RoHS SJ/T 11364-2014

Classification

Compliant by Exemption
Designed, manufactured and/or distributed under this quality management system
Above Maximum Concentration Value (MCV)

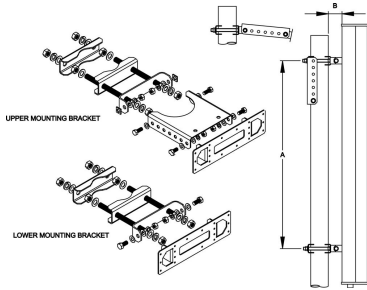


Included Products

T-041-GL-E — Adjustable Tilt Pipe Mounting Kit for 2.0"-4.5" (60-115mm) OD round members for panel antennas. Includes 2 clamp sets.

* Footnotes

Performance Note Severe environmental conditions may degrade optimum performance



Adjustable Tilt Pipe Mounting Kit for 2.0"-4.5" (60-115mm) OD round members for panel antennas. Includes 2 clamp sets.

General Specifications

Application	Outdoor
Includes	Brackets Hardware
Package Quantity	1

Mechanical Specifications

Color	Silver
Material Type	Galvanized steel
Mechanical Tilt	0°-12° in steps of 2°

Dimensions

Antenna-to-Pipe Distance	85.0 mm 3.3 in
Bracket-to-Bracket Distance	976.0 mm 38.4 in
Compatible Diameter, maximum	115.0 mm 4.5 in
Compatible Diameter, minimum	60.0 mm 2.4 in
Compatible Length, maximum	1500.0 mm 59.1 in
Compatible Length, minimum	1200.0 mm 47.2 in
Net Weight	5.5 kg 12.1 lb

Regulatory Compliance/Certifications

Agency	Classification
RoHS 2011/65/EU	Compliant by Exemption
ISO 9001:2015	Designed, manufactured and/or distributed under this quality management system
China RoHS SJ/T 11364-2014	Above Maximum Concentration Value (MCV)
CE	Compliant with the relevant CE product directives

