

8-port multibeam antenna, 4x 698–894 and 4x 1710–2180 MHz, 4x 35° HPBW, 4x RET



- Antenna has individual AISG connectors per band: One in/out pair for low band in cascaded single-RET configuration to independently control the two low band beams; one in/out pair for high band in cascaded single-RET configuration to independently control the two high band beams

## Electrical Specifications

Frequency Band, MHz	698–806	806–894	1710–1880	1850–1990	1920–2180
Gain, dBi	14.9	15.5	17.6	18.6	18.6
Beam Centers, Horizontal, degrees	±29	±25	±32	±30	±28
Beamwidth, Horizontal, degrees	40	35	34	31	31
Beamwidth, Vertical, degrees	15.6	13.5	6.9	6.5	6.2
Beam Tilt, degrees	0–10	0–10	0–10	0–10	0–10
USLS (First Lobe), dB	17	14	18	18	18
Front-to-Back Ratio at 180°, dB	24	24	35	40	39
Isolation, Same Beam, dB	25	25	25	25	25
Isolation, Beam to Beam, dB	18	18	18	18	18
VSWR   Return Loss, dB	1.43   15.0	1.43   15.0	1.43   15.0	1.43   15.0	1.43   15.0
PIM, 3rd Order, 2 x 20 W, dBc	-150	-150	-150	-150	-150
Input Power per Port, maximum, watts	300	300	250	250	250
Polarization	±45°	±45°	±45°	±45°	±45°
Impedance	50 ohm	50 ohm	50 ohm	50 ohm	50 ohm

## Electrical Specifications, BASTA\*

Frequency Band, MHz	698–806	806–894	1710–1880	1850–1990	1920–2180
Gain by all Beam Tilts, average, dBi	14.7	15.1	17.4	18.2	18.4
Gain by all Beam Tilts Tolerance, dB	±0.6	±0.7	±0.6	±0.6	±0.8
Gain by Beam Tilt, average, dBi	0°   14.7 5°   14.7 10°   14.6	0°   15.2 5°   15.1 10°   14.9	0°   17.5 5°   17.4 10°   17.3	0°   18.2 5°   18.2 10°   18.1	0°   18.5 5°   18.5 10°   18.1
Beamwidth, Horizontal Tolerance, degrees	±2	±2.7	±2.8	±1.6	±1.2
Beamwidth, Vertical Tolerance, degrees	±1.1	±0.9	±0.4	±0.2	±0.4
USLS, beampeak to 20° above beampeak, dB	18	16	17	18	18
Front-to-Back Total Power at 180° ± 30°, dB	21	20	30	35	34
CPR at Boresight, dB	19	18	22	22	18

\* CommScope® supports NGMN recommendations on Base Station Antenna Standards (BASTA). To learn more about the benefits of BASTA, [download the whitepaper Time to Raise the Bar on BSAs](#).

## General Specifications

**Operating Frequency Band**

1710 – 2180 MHz | 698 – 894 MHz

# 2UNPX206.12R2

---

<b>Antenna Type</b>	Multibeam
<b>Band</b>	Multiband
<b>Performance Note</b>	Outdoor usage

## Mechanical Specifications

<b>RF Connector Quantity, total</b>	8
<b>RF Connector Quantity, low band</b>	4
<b>RF Connector Quantity, high band</b>	4
<b>RF Connector Interface</b>	7-16 DIN Female
<b>Color</b>	Gray
<b>Grounding Type</b>	RF connector inner conductor and body grounded to reflector and mounting bracket
<b>Radiator Material</b>	Aluminum   Low loss circuit board
<b>Radome Material</b>	ASA, UV stabilized
<b>Reflector Material</b>	Aluminum
<b>RF Connector Location</b>	Bottom
<b>Wind Loading, frontal</b>	1,473.0 N @ 150 km/h   331.1 lbf @ 150 km/h
<b>Wind Loading, lateral</b>	256.0 N @ 150 km/h   57.6 lbf @ 150 km/h
<b>Wind Speed, maximum</b>	200 km/h   124 mph

## Dimensions

<b>Length</b>	1728.0 mm   68.0 in
<b>Width</b>	684.0 mm   26.9 in
<b>Depth</b>	245.0 mm   9.6 in
<b>Net Weight, without mounting kit</b>	44.0 kg   97.0 lb

## Remote Electrical Tilt (RET) Information

<b>Input Voltage</b>	10–30 Vdc
<b>Internal RET</b>	High band (2)   Low band (2)
<b>Power Consumption, idle state, maximum</b>	2 W
<b>Power Consumption, normal conditions, maximum</b>	13 W
<b>Protocol</b>	3GPP/AISG 2.0 (Single RET)
<b>RET Interface</b>	8-pin DIN Female   8-pin DIN Male
<b>RET Interface, quantity</b>	2 female   2 male

## Packed Dimensions

<b>Length</b>	1932.0 mm   76.1 in
<b>Width</b>	787.0 mm   31.0 in
<b>Depth</b>	347.0 mm   13.7 in

## Shipping Weight

69.0 kg | 152.1 lb

## Regulatory Compliance/Certifications

### Agency

RoHS 2011/65/EU  
ISO 9001:2015  
China RoHS SJ/T 11364-2014  
CE

### Classification

Compliant by Exemption  
Designed, manufactured and/or distributed under this quality management system  
Above Maximum Concentration Value (MCV)  
Compliant with the relevant CE product directives



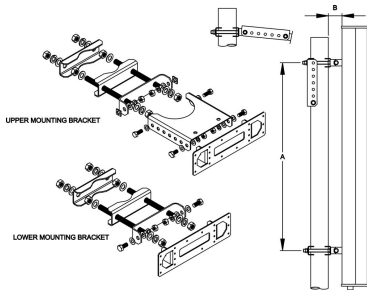
## Included Products

T-041-GL-E — Adjustable Tilt Pipe Mounting Kit for 2.0"-4.5" (60-115mm) OD round members for panel antennas. Includes 2 clamp sets.

## \* Footnotes

### Performance Note

Severe environmental conditions may degrade optimum performance



Adjustable Tilt Pipe Mounting Kit for 2.0"-4.5" (60-115mm) OD round members for panel antennas. Includes 2 clamp sets.

## General Specifications

<b>Application</b>	Outdoor
<b>Includes</b>	Brackets   Hardware
<b>Package Quantity</b>	1

## Mechanical Specifications

<b>Color</b>	Silver
<b>Material Type</b>	Galvanized steel
<b>Mechanical Tilt</b>	0°-12° in steps of 2°

## Dimensions

<b>Antenna-to-Pipe Distance</b>	85.0 mm   3.3 in
<b>Bracket-to-Bracket Distance</b>	976.0 mm   38.4 in
<b>Compatible Diameter, maximum</b>	115.0 mm   4.5 in
<b>Compatible Diameter, minimum</b>	60.0 mm   2.4 in
<b>Compatible Length, maximum</b>	1500.0 mm   59.1 in
<b>Compatible Length, minimum</b>	1200.0 mm   47.2 in
<b>Net Weight</b>	5.5 kg   12.1 lb

## Regulatory Compliance/Certifications

<b>Agency</b>	<b>Classification</b>
RoHS 2011/65/EU	Compliant by Exemption
ISO 9001:2015	Designed, manufactured and/or distributed under this quality management system
China RoHS SJ/T 11364-2014	Above Maximum Concentration Value (MCV)
CE	Compliant with the relevant CE product directives

