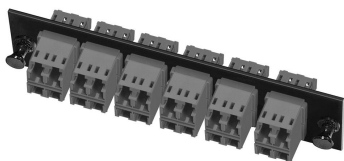


Fiber Optic Snap-in Adapter Pack, multimode, LC, 24-fiber, black, loaded



Product Classification

Portfolio	NETCONNECT®
Product Type	Fiber adapter pack
Regional Availability	Asia Latin America North America

Construction Materials

Fiber Mode	Multimode
-------------------	-----------

Dimensions

Height	29.21 mm 1.15 in
Width	129.54 mm 5.10 in

General Specifications

Interface	LC
Body Style	Quad Straight orientation
Interface Feature	Standard
Adapter Color	Black
Adapters, quantity, front	6
Color, front	Black
Package Quantity	1
Packaging Type	Bag Carton
Total Ports, quantity, front	24

Regulatory Compliance/Certifications

Agency	RoHS 2011/65/EU
---------------	-----------------

Classification	Compliant
-----------------------	-----------

