



Adapter Pack, Black, 1000-Type, with 12 TeraSPEED® SM duplex LC/APC Adapters, green, shuttered

## Product Classification

<b>Portfolio</b>	CommScope®
<b>Brand</b>	TeraSPEED®
<b>Product Series</b>	1000-style
<b>Product Type</b>	Fiber adapter pack
<b>Regional Availability</b>	Asia   Australia/New Zealand   EMEA   Latin America   North America

## Construction Materials

<b>Fiber Mode</b>	Singlemode
-------------------	------------

## General Specifications

<b>Interface</b>	LC
<b>Body Style</b>	Duplex
<b>Interface Feature</b>	APC
<b>Adapter Color</b>	Green
<b>Shuttered</b>	Yes
<b>Adapter Cutout, quantity</b>	24
<b>Adapters, quantity</b>	12
<b>Application</b>	Used in conjunction with G2 1U, 2U and 4U adapter panel shelves, surface mount and raised floor enclosures   Used in conjunction with panels and enclosures (rack, wall, and floor mount) that accept 1000 style panels
<b>Total Ports, quantity</b>	12

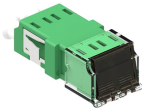
## Regulatory Compliance/Certifications

<b>Agency</b>	<b>Classification</b>
RoHS 2011/65/EU	Compliant
ISO 9001:2015	Designed, manufactured and/or distributed under this quality management system



## Included Products

760056036 | AFA-LC02-GR/LP-SHUTTERED — TeraSPEED® LC-APC Duplex Low Profile Shuttered Adapter, Green, Single Pack



TeraSPEED® LC-APC Duplex Low Profile Shuttered Adapter, Green, Single Pack

## Product Classification

<b>Portfolio</b>	CommScope®
<b>Brand</b>	TeraSPEED®
<b>Product Series</b>	AFA
<b>Product Type</b>	Fiber adapter
<b>Regional Availability</b>	Asia   Australia/New Zealand   EMEA   Latin America   North America

## Construction Materials

<b>Alignment Sleeve Material</b>	Zirconia
<b>Fiber Mode</b>	Singlemode

## General Specifications

<b>Interface</b>	LC
<b>Body Style</b>	Duplex
<b>Interface Feature</b>	APC
<b>Color</b>	Green
<b>Package Quantity</b>	1
<b>Shuttered</b>	Yes
<b>Total Ports, quantity</b>	2
<b>Transmission Standards</b>	TIA/EIA-568-B.3   TIA/EIA-604 FOCIS-3

## Mechanical Specifications

<b>Mount Type</b>	No flange
-------------------	-----------

## Regulatory Compliance/Certifications

<b>Agency</b>	<b>Classification</b>
RoHS 2011/65/EU	Compliant
ISO 9001:2015	Designed, manufactured and/or distributed under this quality management system

