

FF-65C-R1

4-port sector antenna, 4x 617–806 MHz, 65° HPBW, 1x RET, 600MHz-Ready Antenna Technology



- Supports up to 10° of Mechanical Down Tilt

Electrical Specifications

Frequency Band, MHz	617–698	698–806
Gain, dBi	15.4	15.6
Beamwidth, Horizontal, degrees	64	63
Beamwidth, Vertical, degrees	10.3	9.2
Beam Tilt, degrees	2–13	2–13
USLS (First Lobe), dB	19	17
Front-to-Back Ratio at 180°, dB	33	31
Isolation, Cross Polarization, dB	28	28
Isolation, Inter-band, dB	28	28
VSWR Return Loss, dB	1.5 14.0	1.5 14.0
PIM, 3rd Order, 2 x 20 W, dBc		-153
Input Power per Port at 50°C, maximum, watts	250	250
Polarization	±45°	±45°
Impedance	50 ohm	50 ohm

Electrical Specifications, BASTA*

Frequency Band, MHz	617–698	698–806
Gain by all Beam Tilts, average, dBi	15.0	15.3
Gain by all Beam Tilts Tolerance, dB	±0.6	±0.5
Gain by Beam Tilt, average, dBi	2 ° 14.8 8 ° 15.1 13 ° 15.0	2 ° 15.0 8 ° 15.4 13 ° 15.2
Beamwidth, Horizontal Tolerance, degrees	±3.3	±4
Beamwidth, Vertical Tolerance, degrees	±0.6	±0.7
USLS, beampeak to 20° above beampeak, dB	17	14
Front-to-Back Total Power at 180° ± 30°, dB	22	22
CPR at Boresight, dB	18	20
CPR at Sector, dB	4	10

* CommScope® supports NGMN recommendations on Base Station Antenna Standards (BASTA). To learn more about the benefits of BASTA, [download the whitepaper Time to Raise the Bar on BSAs](#).

Port Configuration



General Specifications

Operating Frequency Band	617 – 806 MHz
Antenna Type	Sector
Band	Single band
Performance Note	Outdoor usage
Total Input Power, maximum	500 W @ 50 °C

Mechanical Specifications

RF Connector Quantity, total	4
RF Connector Quantity, low band	4
RF Connector Interface	4.3-10 Female
Color	Light gray
Grounding Type	RF connector inner conductor and body grounded to reflector and mounting bracket
Radiator Material	Aluminum Low loss circuit board
Radome Material	Fiberglass, UV resistant
RF Connector Location	Bottom
Wind Loading, maximum	1433.0 N @ 150 km/h 322.2 lbf @ 150 km/h
Wind Speed, maximum	241 km/h 150 mph

FF-65C-R1

Dimensions

Length	2437.0 mm 95.9 in
Width	640.0 mm 25.2 in
Depth	235.0 mm 9.3 in
Net Weight, without mounting kit	53.5 kg 117.9 lb

Remote Electrical Tilt (RET) Information

Input Voltage	10–30 Vdc
Internal RET	Low band (1)
Power Consumption, idle state, maximum	1 W
Power Consumption, normal conditions, maximum	10 W
Protocol	3GPP/AISG 2.0 (Single RET)
RET Interface	8-pin DIN Female 8-pin DIN Male
RET Interface, quantity	1 female 1 male

Packed Dimensions

Length	2590.0 mm 102.0 in
Width	752.0 mm 29.6 in
Depth	387.0 mm 15.2 in
Shipping Weight	79.0 kg 174.2 lb

Regulatory Compliance/Certifications

Agency

RoHS 2011/65/EU
ISO 9001:2015
China RoHS SJ/T 11364-2014

Classification

Compliant by Exemption
Designed, manufactured and/or distributed under this quality management system
Above Maximum Concentration Value (MCV)



Included Products

BSAMNT-4 — Wide Profile Antenna Downtilt Mounting Kit for 2.4 - 4.5 in (60 - 115 mm) OD round members. Kit contains one scissor top bracket set and one bottom bracket set.

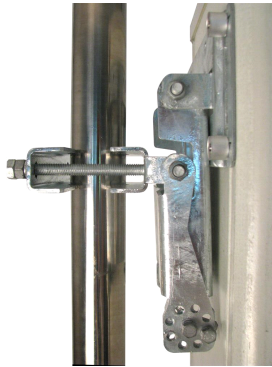
BSAMNT-M4 — Middle Downtilt Mounting Kit for Long Antennas for 2.4 - 4.5 in (60 - 115 mm) OD round members. Kit contains one scissor bracket set.

* Footnotes

Performance Note

Severe environmental conditions may degrade optimum performance

BSAMNT-4



Wide Profile Antenna Downtilt Mounting Kit for 2.4 - 4.5 in (60 - 115 mm) OD round members. Kit contains one scissor top bracket set and one bottom bracket set.

General Specifications

Application	Outdoor
Includes	Brackets Hardware
Package Quantity	1

Mechanical Specifications

Color	Silver
Material Type	Galvanized steel

Dimensions

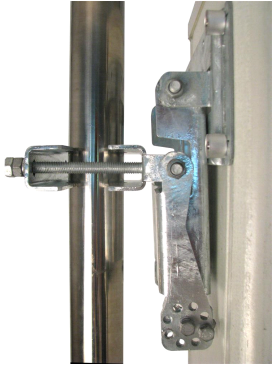
Compatible Diameter, maximum	115.0 mm 4.5 in
Compatible Diameter, minimum	60.0 mm 2.4 in
Net Weight	6.6 kg 14.6 lb

Regulatory Compliance/Certifications

Agency	Classification
RoHS 2011/65/EU	Compliant by Exemption
ISO 9001:2015	Designed, manufactured and/or distributed under this quality management system
China RoHS SJ/T 11364-2014	Above Maximum Concentration Value (MCV)



BSAMNT-M4



Middle Downtilt Mounting Kit for Long Antennas for 2.4 - 4.5 in (60 - 115 mm) OD round members. Kit contains one scissor bracket set.

General Specifications

Application	Outdoor
Includes	Brackets Hardware
Package Quantity	1

Mechanical Specifications

Color	Silver
Material Type	Galvanized steel

Dimensions

Compatible Diameter, maximum	114.3 mm 4.5 in
Compatible Diameter, minimum	61.0 mm 2.4 in
Net Weight	4.8 kg 10.6 lb

Regulatory Compliance/Certifications

Agency	Classification
RoHS 2011/65/EU	Compliant by Exemption
ISO 9001:2015	Designed, manufactured and/or distributed under this quality management system
China RoHS SJ/T 11364-2014	Above Maximum Concentration Value (MCV)

