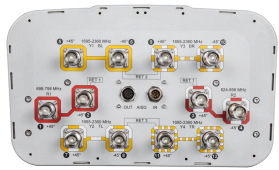


SBJAH4-1D65C-SR



12-port sector antenna, 2x 698–798, 2x 824–896 and 8x 1695–2360 MHz, 65° HPBW, 3x RET and low bands have diplexers

- Interleaved dipole technology providing for attractive, low wind load mechanical package
- Provides support for future Band 14 operations

OBSOLETE

This product was discontinued on: December 31, 2018

Electrical Specifications

Frequency Band, MHz	698–798	824–896	1695–1880	1850–1990	1920–2180	2300–2360
Gain, dBi	15.9	16.4	16.9	17.2	17.6	18.0
Beamwidth, Horizontal, degrees	67	64	63	63	64	65
Beamwidth, Vertical, degrees	9.7	8.6	8.2	7.5	7.0	6.2
Beam Tilt, degrees	2–11	2–11	2–12	2–12	2–12	2–12
USLS (First Lobe), dB	16	18	17	18	17	14
Front-to-Back Ratio at 180°, dB	32	34	31	36	36	36
Isolation, Cross Polarization, dB	28	28	28	28	28	28
Isolation, Inter-band, dB	30	30	30	30	30	30
VSWR Return Loss, dB	1.5 14.0	1.5 14.0	1.5 14.0	1.5 14.0	1.5 14.0	1.5 14.0
PIM, 3rd Order, 2 x 20 W, dBc	-153	-153	-153	-153	-153	-153
Input Power per Port, maximum, watts	350	350	350	350	350	300
Polarization	±45°	±45°	±45°	±45°	±45°	±45°
Impedance	50 ohm	50 ohm	50 ohm	50 ohm	50 ohm	50 ohm

Electrical Specifications, BASTA*

Frequency Band, MHz	698–798	824–896	1695–1880	1850–1990	1920–2180	2300–2360
Gain by all Beam Tilts, average, dBi	15.7	16.2	16.4	16.8	17.0	17.5
Gain by all Beam Tilts Tolerance, dB	±0.4	±0.4	±0.6	±0.4	±0.6	±0.5
Gain by Beam Tilt, average, dBi	2° 15.6 6° 15.8 11° 15.7	2° 15.9 6° 16.2 11° 16.2	2° 16.3 6° 16.4 12° 16.3	2° 16.7 6° 16.9 12° 16.7	2° 16.7 6° 17.2 12° 17.0	2° 17.1 6° 17.6 12° 17.4
Beamwidth, Horizontal Tolerance, degrees	±1.1	±1.5	±3.5	±3	±4.5	±3.7
Beamwidth, Vertical Tolerance, degrees	±0.7	±0.6	±0.5	±0.4	±0.6	±0.2
USLS, beampeak to 20° above beampeak, dB	16	17	14	16	16	14
Front-to-Back Total Power at 180° ± 30°, dB	26	24	27	30	27	28
CPR at Boresight, dB	21	21	19	21	23	24
CPR at Sector, dB	10	12	10	14	13	8

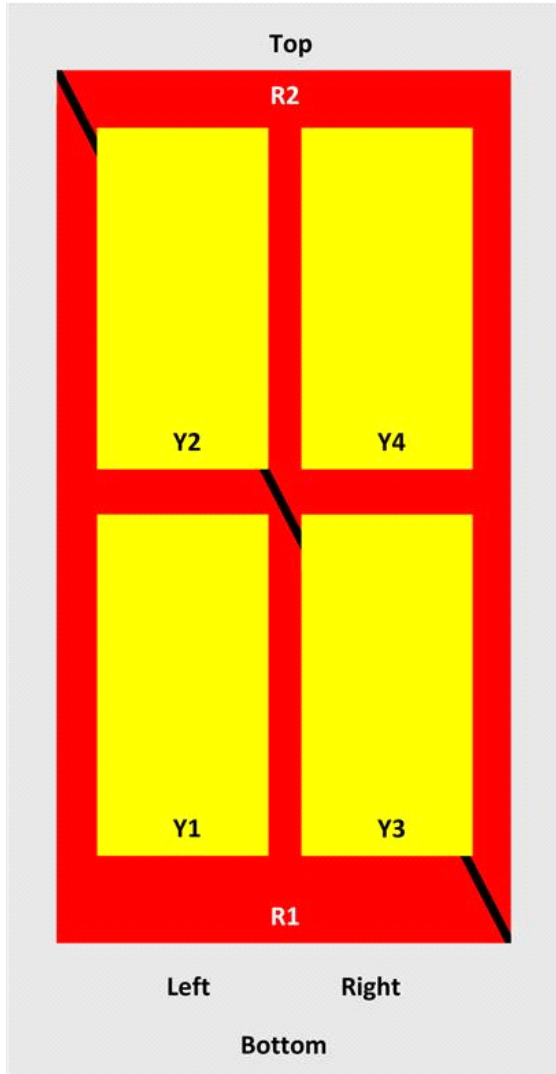
* CommScope® supports NGMN recommendations on Base Station Antenna Standards (BASTA). To learn more about the benefits of BASTA, [download the](#)

SBJAH4-1D65C-SR

[whitepaper Time to Raise the Bar on BSAs.](#)

Array Layout

SBJAH4-1D65C-SR



Array	Freq (MHz)	Conns	RET (SRET)	AISG RET UID
R1	698-798	1-2	1	ANXXXXXXXXXXXXXXXXX1
R2	824-896	3-4		
Y1	1695-2360	5-6	2	ANXXXXXXXXXXXXXXXXX2
Y3	1695-2360	9-10		
Y2	1695-2360	7-8	3	ANXXXXXXXXXXXXXXXXX3
Y4	1695-2360	11-12		

View from the front of the antenna
 (Sizes of colored boxes are not true depictions of array sizes)

General Specifications

SBJAH4-1D65C-SR

Operating Frequency Band	1695 – 2360 MHz 698 – 798 MHz 824 – 896 MHz
Antenna Type	Sector
Band	Multiband
Performance Note	Outdoor usage

Mechanical Specifications

RF Connector Quantity, total	12
RF Connector Quantity, low band	4
RF Connector Quantity, high band	8
RF Connector Interface	4.3-10 Female
Color	Light gray
Grounding Type	RF connector inner conductor and body grounded to reflector and mounting bracket
Radiator Material	Aluminum Low loss circuit board
Radome Material	Fiberglass, UV resistant
Reflector Material	Aluminum
RF Connector Location	Bottom
Wind Loading, frontal	425.0 N @ 150 km/h 9.8 lbf @ 150 km/h
Wind Loading, lateral	361.0 N @ 150 km/h 81.2 lbf @ 150 km/h
Wind Loading, maximum	202.3 lbf @ 150 km/h 900.0 N @ 150 km/h
Wind Speed, maximum	241 km/h 150 mph

Dimensions

Length	2438.0 mm 96.0 in
Width	350.0 mm 13.8 in
Depth	208.0 mm 8.2 in
Net Weight, without mounting kit	32.2 kg 71.0 lb

Remote Electrical Tilt (RET) Information

Input Voltage	10–30 Vdc
Internal RET	High band (2) Low band (1)
Power Consumption, idle state, maximum	2 W
Power Consumption, normal conditions, maximum	13 W
Protocol	3GPP/AISG 2.0 (Single RET)
RET Interface	8-pin DIN Female 8-pin DIN Male
RET Interface, quantity	1 female 1 male

Packed Dimensions

Length	2585.0 mm 101.8 in
Width	450.0 mm 17.7 in

SBJAH4-1D65C-SR

Depth 355.0 mm | 14.0 in
Shipping Weight 47.0 kg | 103.6 lb

Regulatory Compliance/Certifications

Agency

RoHS 2011/65/EU

ISO 9001:2015

China RoHS SJ/T 11364-2014

Classification

Compliant by Exemption

Designed, manufactured and/or distributed under this quality management system

Above Maximum Concentration Value (MCV)



Included Products

BSAMNT-3 — Wide Profile Antenna Downtilt Mounting Kit for 2.4 - 4.5 in (60 - 115 mm) OD round members. Kit contains one scissor top bracket set and one bottom bracket set.

* Footnotes

Performance Note

Severe environmental conditions may degrade optimum performance