

CCV4PX310.11R-C3



12-port sector antenna, 4x 790–960 and 8x 1695–2690 MHz, 65° HPBW, 6x RET with manual override. Bands cascaded SRET.

- Integrated Internal Remote Electrical Tilt (RET), with independent control of electrical tilt with manual override on all arrays
- All Internal RET actuators are connected in “Cascaded SRET” configuration
- Uses the 4.3-10 connector which is 40 percent smaller than the 7-16 DIN connector

This product will be discontinued on: March 27, 2020

Replaced By

RRV4-65D-R6 12-port sector antenna, 4x 694–960 and 8x 1695–2690 MHz, 65° HPBW, 6x RET. Antenna rear wind loading 880N @ 150km/h

Electrical Specifications

Frequency Band, MHz	790–862	880–960	1695–1880	1850–1990	1920–2180	2300–2500	2500–2690
Gain, dBi	15.8	16.4	16.7	16.8	17.4	18.1	18.1
Beamwidth, Horizontal, degrees	73	62	63	66	67	62	64
Beamwidth, Vertical, degrees	8.9	8.1	7.6	7.0	6.6	5.5	5.2
Beam Tilt, degrees	0–10	0–10	0–10	0–10	0–10	0–10	0–10
USLS (First Lobe), dB	18	18	18	18	18	18	18
Null Fill, dB	-22	-22	-22	-22	-22	-22	-22
Front-to-Back Ratio at 180°, dB	35	34	33	38	39	39	41
Isolation, Cross Polarization, dB	28	28	28	28	28	28	28
Isolation, Inter-band, dB	28	28	28	28	28	28	28
VSWR Return Loss, dB	1.5 14.0	1.5 14.0	1.5 14.0	1.5 14.0	1.5 14.0	1.5 14.0	1.5 14.0
PIM, 3rd Order, 2 x 20 W, dBc	-150	-150	-150	-150	-150	-150	-150
Input Power per Port, maximum, watts	300	300	250	250	250	250	250
Polarization	±45°	±45°	±45°	±45°	±45°	±45°	±45°
Impedance	50 ohm	50 ohm	50 ohm	50 ohm	50 ohm	50 ohm	50 ohm

Electrical Specifications, BASTA*

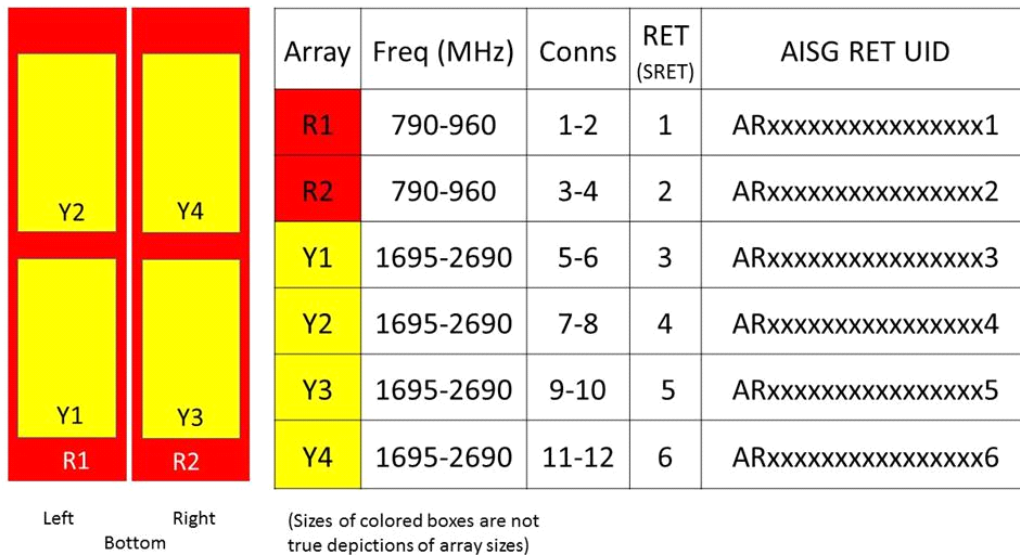
Frequency Band, MHz	790–862	880–960	1695–1880	1850–1990	1920–2180	2300–2500	2500–2690
Gain by all Beam Tilts, average, dBi	15.5	16.2	16.4	16.4	16.9	17.8	17.8
Gain by all Beam Tilts Tolerance, dB	±0.5	±0.3	±0.4	±0.5	±0.8	±0.4	±0.4
Gain by Beam Tilt, average, dBi	0 ° 15.5 5 ° 15.5 10 ° 15.6	0 ° 16.2 5 ° 16.2 10 ° 16.1	0 ° 16.3 5 ° 16.4 10 ° 16.4	0 ° 16.4 5 ° 16.4 10 ° 16.4	0 ° 16.9 5 ° 16.9 10 ° 16.9	0 ° 17.9 5 ° 17.9 10 ° 17.6	0 ° 17.7 5 ° 17.8 10 ° 17.7
Beamwidth, Horizontal Tolerance, degrees	±5.7	±4.7	±3.4	±7.3	±4.6	±3.7	±3.7
Beamwidth, Vertical Tolerance, degrees	±0.4	±0.3	±0.5	±0.3	±0.5	±0.3	±0.2
USLS, beampeak to 20° above beampeak, dB	18	18	18	18	18	18	18
Front-to-Back Total Power at 180° ± 30°, dB	23	24	26	30	30	32	32

CCV4PX310.11R-C3

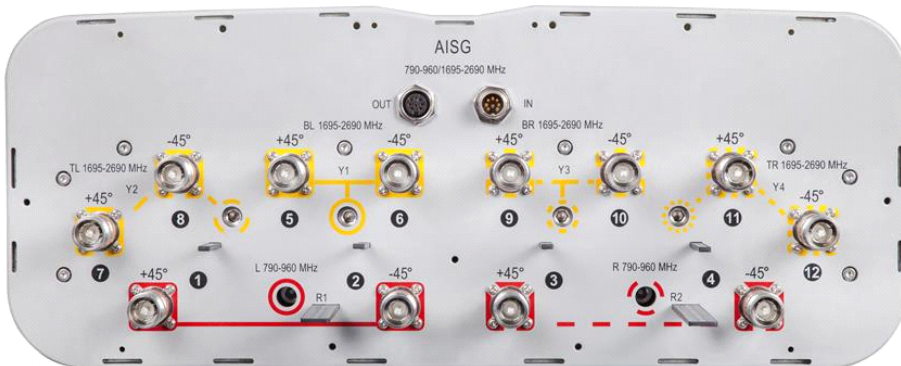
CPR at Boresight, dB	19	18	20	20	19	17	18
CPR at Sector, dB	11	9	9	10	11	11	12

* CommScope® supports NGMN recommendations on Base Station Antenna Standards (BASTA). To learn more about the benefits of BASTA, [download the whitepaper Time to Raise the Bar on BSAs.](#)

Array Layout



Port Configuration



General Specifications

Operating Frequency Band	1695 – 2690 MHz 790 – 960 MHz
Antenna Type	Sector
Band	Multiband
Performance Note	Outdoor usage

Mechanical Specifications

RF Connector Quantity, total	12
RF Connector Quantity, low band	4
RF Connector Quantity, high band	8
RF Connector Interface	4.3-10 Female
Grounding Type	RF connector inner conductor and body grounded to reflector and mounting bracket
Radiator Material	Low loss circuit board
Radome Material	Fiberglass, UV resistant
Reflector Material	Aluminum
RF Connector Location	Bottom
Wind Loading, frontal	1085.0 N @ 150 km/h 243.9 lbf @ 150 km/h
Wind Loading, lateral	380.0 N @ 150 km/h 85.4 lbf @ 150 km/h

CCV4PX310.11R-C3

Wind Loading, maximum	1404.0 N @ 150 km/h 315.6 lbf @ 150 km/h
Wind Speed, maximum	200 km/h 124 mph

Dimensions

Length	2720.0 mm 107.1 in
Width	498.0 mm 19.6 in
Depth	197.0 mm 7.8 in
Net Weight, without mounting kit	54.0 kg 119.0 lb

Remote Electrical Tilt (RET) Information

Input Voltage	10–30 Vdc
Internal RET	High band (4) Low band (2)
Power Consumption, idle state, maximum	2 W
Power Consumption, normal conditions, maximum	13 W
Protocol	3GPP/AISG 2.0 (Single RET)
RET Interface	8-pin DIN Female 8-pin DIN Male
RET Interface, quantity	1 female 1 male

Packed Dimensions

Length	2906.0 mm 114.4 in
Width	565.0 mm 22.2 in
Depth	312.0 mm 12.3 in
Shipping Weight	78.8 kg 173.7 lb

Regulatory Compliance/Certifications

Agency	Classification
RoHS 2011/65/EU	Compliant by Exemption
ISO 9001:2015	Designed, manufactured and/or distributed under this quality management system
China RoHS SJ/T 11364-2014	Above Maximum Concentration Value (MCV)
CE	Compliant with the relevant CE product directives



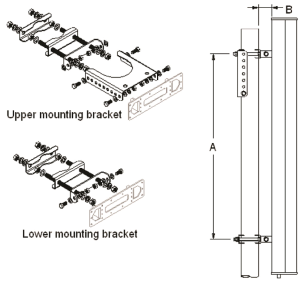
Included Products

T-029-GL-E — Adjustable Tilt Pipe Mounting Kit for 2.0"-4.5" (60-115mm) OD round members for panel antennas. Includes 2 clamp sets.

* Footnotes

Performance Note

Severe environmental conditions may degrade optimum performance



Adjustable Tilt Pipe Mounting Kit for 2.0"-4.5" (60-115mm) OD round members for panel antennas. Includes 2 clamp sets.

General Specifications

Application	Outdoor
Includes	Brackets Hardware
Package Quantity	1

Mechanical Specifications

Color	Silver
Material Type	Galvanized steel
Mechanical Tilt	0°–8°

Dimensions

Antenna-to-Pipe Distance	85.0 mm 3.3 in
Bracket-to-Bracket Distance	1400.0 mm 55.1 in
Compatible Diameter, maximum	115.0 mm 4.5 in
Compatible Diameter, minimum	60.0 mm 2.4 in
Compatible Length, maximum	2850.0 mm 112.2 in
Compatible Length, minimum	1500.0 mm 59.1 in
Net Weight	6.0 kg 13.2 lb

Regulatory Compliance/Certifications

Agency	Classification
RoHS 2011/65/EU	Compliant by Exemption
ISO 9001:2015	Designed, manufactured and/or distributed under this quality management system
China RoHS SJ/T 11364-2014	Above Maximum Concentration Value (MCV)
CE	Compliant with the relevant CE product directives

