

CNPX308.10M-2P



2-port sector antenna, 2x (824–960 and 1710–2170 MHz), 65° HPBW, manual electrical tilt (not upgradeable) with internal diplexer

OBSOLETE

This product was discontinued on: **December 31, 2018**

Replaced By

DBXLH-6565B-VTM
DBXLH-6565B-A2M

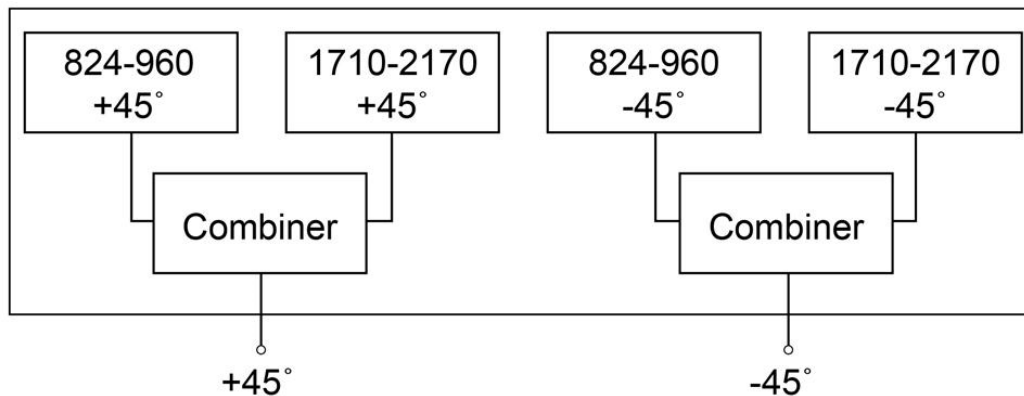
4-port sector antenna, 2x 824–960 and 2x 1710–2180 MHz, 65° HPBW, RET compatible

Electrical Specifications

Frequency Band, MHz	824–890	890–960	1710–1880	1920–2170
Gain, dBi	16.2	17.0	16.8	17.8
Beamwidth, Horizontal, degrees	67	62	68	63
Beamwidth, Vertical, degrees	9.5	9.0	7.2	6.5
Beam Tilt, degrees	0–10	0–10	0–10	0–10
USLS (First Lobe), dB	18	18	18	18
Front-to-Back Ratio at 180°, dB	25	25	25	25
Isolation, Cross Polarization, dB	30	30	30	30
VSWR Return Loss, dB	1.43 15.0	1.43 15.0	1.43 15.0	1.43 15.0
PIM, 3rd Order, 2 x 20 W, dBc	-150	-150	-150	-150
Input Power per Port, maximum, watts	500	500	300	300
Polarization	±45°	±45°	±45°	±45°
Impedance	50 ohm	50 ohm	50 ohm	50 ohm

Port Configuration

Port Configuration CNPX....-2P DBXLHC



General Specifications

Operating Frequency Band	1710 – 2170 MHz 824 – 960 MHz
Antenna Type	Sector
Band	Multiband
Performance Note	Outdoor usage

Mechanical Specifications

RF Connector Quantity, total	2
RF Connector Interface	7-16 DIN Female
Grounding Type	RF connector inner conductor and body grounded to reflector and mounting brack
Radome Material	Polyester fiberglass pultrusion
RF Connector Location	Bottom
RF Connector Quantity, diplexed low and high bands	2
Wind Loading, maximum	1150.0 N @ 160 km/h 258.5 lbf @ 160 km/h
Wind Speed, maximum	200 km/h 124 mph

Dimensions

Length	2120.0 mm 83.5 in
Width	370.0 mm 14.6 in
Depth	120.0 mm 4.7 in
Net Weight, without mounting kit	25.0 kg 55.1 lb

CNPX308.10M-2P

Packed Dimensions

Length	2245.0 mm 88.4 in
Width	440.0 mm 17.3 in
Depth	216.0 mm 8.5 in
Shipping Weight	25.0 kg 55.1 lb

Regulatory Compliance/Certifications

Agency

RoHS 2011/65/EU

ISO 9001:2015

China RoHS SJ/T 11364-2014

Classification

Compliant by Exemption

Designed, manufactured and/or distributed under this quality management system

Above Maximum Concentration Value (MCV)



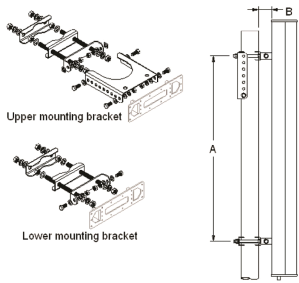
Included Products

T-029-GL-E — Adjustable Tilt Pipe Mounting Kit for 2.0"-4.5" (60-115mm) OD round members for panel antennas. Includes 2 clamp sets.

* Footnotes

Performance Note

Severe environmental conditions may degrade optimum performance



Adjustable Tilt Pipe Mounting Kit for 2.0"-4.5" (60-115mm) OD round members for panel antennas. Includes 2 clamp sets.

General Specifications

Application	Outdoor
Includes	Brackets Hardware
Package Quantity	1

Mechanical Specifications

Color	Silver
Material Type	Galvanized steel
Mechanical Tilt	0°–8°

Dimensions

Antenna-to-Pipe Distance	85.0 mm 3.3 in
Bracket-to-Bracket Distance	1400.0 mm 55.1 in
Compatible Diameter, maximum	115.0 mm 4.5 in
Compatible Diameter, minimum	60.0 mm 2.4 in
Compatible Length, maximum	2850.0 mm 112.2 in
Compatible Length, minimum	1500.0 mm 59.1 in
Net Weight	6.0 kg 13.2 lb

Regulatory Compliance/Certifications

Agency	Classification
RoHS 2011/65/EU	Compliant by Exemption
ISO 9001:2015	Designed, manufactured and/or distributed under this quality management system
China RoHS SJ/T 11364-2014	Above Maximum Concentration Value (MCV)
CE	Compliant with the relevant CE product directives

