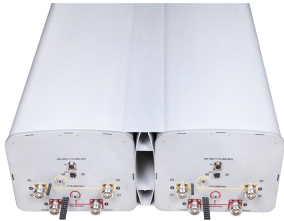


R2V2PX310R



8-port sector antenna, 4x 694–960 and 4x 1710–2690 MHz, 65° HPBW, 4x RET with manual override.

- Integrated Internal Remote Electrical Tilt (RET), with independent control of electrical tilt with manual override on all arrays
- All Internal RET actuators are connected in “Cascaded SRET” configuration

OBSOLETE

This product was discontinued on: December 31, 2018

Replaced By

RRVV-65D-R4	8-port sector antenna, 4x 694–960 and 4x 1695–2690 MHz, 65° HPBW, 4x RET
RRVV-65D-R4-V2	8-port sector antenna, 4x 694–960 and 4x 1695–2690 MHz, 65° HPBW, 4x RET, includes retractable tilt rods

Electrical Specifications

Frequency Band, MHz	694–790	790–890	890–960	1710–1920	1920–2170	2300–2690
Gain, dBi	15.9	16.4	16.7	16.1	17.3	17.7
Beamwidth, Horizontal, degrees	64	62	59	61	58	58
Beamwidth, Vertical, degrees	10.2	8.9	8.1	8.4	7.4	5.9
Beam Tilt, degrees	0–10	0–10	0–10	0–10	0–10	0–10
USLS (First Lobe), dB	16	16	15	18	18	18
Front-to-Back Ratio at 180°, dB	32	33	32	31	32	35
CPR at Boresight, dB	15	21	20	22	20	10
CPR at Sector, dB	10	13	12	13	10	4
Isolation, Cross Polarization, dB	25	25	25	25	25	25
Isolation, Inter-band, dB	28	30	30	27	28	30
VSWR Return Loss, dB	1.43 15.0	1.43 15.0	1.43 15.0	1.5 14.0	1.5 14.0	1.5 14.0
PIM, 3rd Order, 2 x 20 W, dBc	-150	-150	-150	-150	-150	-150
Input Power per Port, maximum, watts	300	300	300	250	250	250
Polarization	±45°	±45°	±45°	±45°	±45°	±45°
Impedance	50 ohm	50 ohm	50 ohm	50 ohm	50 ohm	50 ohm

Electrical Specifications, BASTA*

Frequency Band, MHz	694–790	790–890	890–960	1710–1920	1920–2170	2300–2690
Gain by all Beam Tilts, average, dBi	15.5	16.1	16.3	15.9	16.9	17.7
Gain by all Beam Tilts Tolerance, dB	±0.5	±0.3	±0.3	±0.6	±0.5	±0.6
Gain by Beam Tilt, average, dBi	0° 15.5 5° 15.5 10° 15.5	0° 16.1 5° 16.0 10° 16.1	0° 16.4 5° 16.3 10° 16.3	0° 15.9 5° 15.9 10° 16.0	0° 17.0 5° 16.9 10° 16.7	0° 17.7 5° 17.7 10° 17.6
Beamwidth, Horizontal Tolerance, degrees	±2.3	±2.3	±2.4	±2.8	±2.6	±4.8
Beamwidth, Vertical Tolerance, degrees	±0.7	±0.5	±0.3	±0.6	±0.6	±0.6

R2V2PX310R

USLS, beampeak to 20° above beampeak, dB	16	16	15	18	19	19
Front-to-Back Total Power at 180° ± 30°, dB	26	27	25	29	30	30
CPR at Boresight, dB	16	23	20	26	20	12
CPR at Sector, dB	10	13	10	14	11	4

* CommScope® supports NGMN recommendations on Base Station Antenna Standards (BASTA). To learn more about the benefits of BASTA, [download the whitepaper Time to Raise the Bar on BSAs](#).

General Specifications

Operating Frequency Band	1710 – 2690 MHz 694 – 960 MHz
Antenna Type	Sector
Band	Multiband
Performance Note	Outdoor usage

Mechanical Specifications

RF Connector Quantity, total	8
RF Connector Quantity, low band	4
RF Connector Quantity, high band	4
RF Connector Interface	7-16 DIN Female
Grounding Type	RF connector inner conductor and body grounded to reflector and mounting bracket
Radiator Material	Brass Low loss circuit board
Radome Material	ASA, UV stabilized
Reflector Material	Aluminum
RF Connector Location	Bottom
Wind Loading, frontal	2,008.0 N @ 150 km/h 45.4 lbf @ 150 km/h
Wind Loading, lateral	103.1 lbf @ 150 km/h 460.0 N @ 150 km/h
Wind Speed, maximum	250 km/h 155 mph

Dimensions

Length	2490.0 mm 98.0 in
Width	641.0 mm 25.2 in
Depth	244.0 mm 9.6 in
Net Weight, without mounting kit	60.0 kg 132.3 lb

Remote Electrical Tilt (RET) Information

Input Voltage	10–30 Vdc
Internal RET	High band (2) Low band (2)
Power Consumption, idle state, maximum	2 W

R2V2PX310R

Power Consumption, normal conditions, maximum	13 W
Protocol	3GPP/AISG 2.0 (Single RET)
RET Interface	8-pin DIN Female 8-pin DIN Male
RET Interface, quantity	2 female 2 male

Packed Dimensions

Length	2677.0 mm 105.4 in
Width	719.0 mm 28.3 in
Depth	363.0 mm 14.3 in
Shipping Weight	90.0 kg 198.4 lb

Regulatory Compliance/Certifications

Agency

RoHS 2011/65/EU

ISO 9001:2015

China RoHS SJ/T 11364-2014

Classification

Compliant by Exemption

Designed, manufactured and/or distributed under this quality management system

Above Maximum Concentration Value (MCV)



Included Products

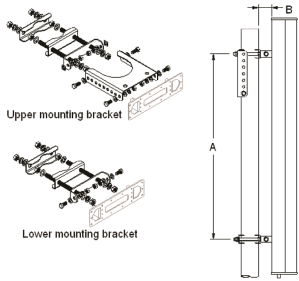
T-029-GL-E — Adjustable Tilt Pipe Mounting Kit for 2.0"-4.5" (60-115mm) OD round members for panel antennas. Includes 2 clamp sets.

ATCB-B01-C50 — AISG RET Control Cable, 0.5 m

* Footnotes

Performance Note

Severe environmental conditions may degrade optimum performance



Adjustable Tilt Pipe Mounting Kit for 2.0"-4.5" (60-115mm) OD round members for panel antennas. Includes 2 clamp sets.

General Specifications

Application	Outdoor
Includes	Brackets Hardware
Package Quantity	1

Mechanical Specifications

Color	Silver
Material Type	Galvanized steel
Mechanical Tilt	0°–8°

Dimensions

Antenna-to-Pipe Distance	85.0 mm 3.3 in
Bracket-to-Bracket Distance	1400.0 mm 55.1 in
Compatible Diameter, maximum	115.0 mm 4.5 in
Compatible Diameter, minimum	60.0 mm 2.4 in
Compatible Length, maximum	2850.0 mm 112.2 in
Compatible Length, minimum	1500.0 mm 59.1 in
Net Weight	6.0 kg 13.2 lb

Regulatory Compliance/Certifications

Agency	Classification
RoHS 2011/65/EU	Compliant by Exemption
ISO 9001:2015	Designed, manufactured and/or distributed under this quality management system
China RoHS SJ/T 11364-2014	Above Maximum Concentration Value (MCV)
CE	Compliant with the relevant CE product directives



ATCB-B01-C50



AISG RET Control Cable, 0.5 m

- Feeds data and power to RET system components
- AISG and RoHS compliant

Electrical Specifications

EU Certification	CB CE
Protocol	AISG 1.1 AISG 2.0
Voltage, maximum	300 V

Product Classification

Product Type	AISG standard cable
---------------------	---------------------

Mechanical Specifications

AISG Connector A	8-pin DIN Female
AISG Connector A Body Style	Straight
AISG Connector A Standard	IEC 60130-9
AISG Connector B	8-pin DIN Male
AISG Connector B Body Style	Straight
AISG Connector B Standard	IEC 60130-9
Data Conductor Type	0.24 mm ² (24 AWG) twisted pair
Power Conductor Type	0.82 mm ² (18 AWG) stranded
Total Conductors, quantity	6
Color	Black

Environmental Specifications

Climatic Sequence Test Method	IEC 60068-2-14
Cold Exposure Test Method	IEC 60068-2-1
Damp Heat Exposure Test Method	IEC 60068-2-30, Test Condition Db
Heat Exposure Test Method	IEC 60068-2-2
Operating Temperature	-40 °C to +70 °C (-40 °F to +158 °F)
Rain Simulation Test Method	IEC 60068-2-18, Test Condition Ra, Method 1
Relative Humidity	Up to 100%
UV Resistance Test Method	IEC 60068-2-5, Test Condition B
Ingress Protection Test Method	IEC 60529:2001, IP67

Dimensions

Length	0.5 m 1.6 ft
---------------	----------------

ATCB-B01-C50

Diameter Over Jacket 8.000 mm | 0.315 in
Net Weight 0.1 kg | 0.3 lb

Regulatory Compliance/Certifications

Agency

RoHS 2011/65/EU
ISO 9001:2015
China RoHS SJ/T 11364-2014
CE

Classification

Compliant by Exemption
Designed, manufactured and/or distributed under this quality management system
Above Maximum Concentration Value (MCV)
Compliant with the relevant CE product directives

