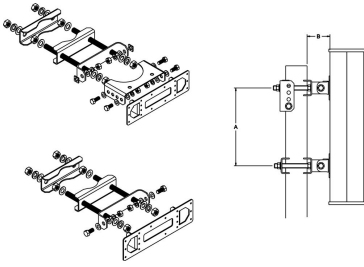


# T-095-GL-E



Adjustable Tilt Pipe Mounting Kit for 2.0"-4.5" (60-115mm) OD round members for panel antennas. Includes 2 clamp sets.

## General Specifications

|                         |                     |
|-------------------------|---------------------|
| <b>Application</b>      | Outdoor             |
| <b>Includes</b>         | Brackets   Hardware |
| <b>Package Quantity</b> | 1                   |

## Mechanical Specifications

|                        |                       |
|------------------------|-----------------------|
| <b>Color</b>           | Silver                |
| <b>Material Type</b>   | Galvanized steel      |
| <b>Mechanical Tilt</b> | 0°–15° in steps of 5° |

## Dimensions

|                                     |                    |
|-------------------------------------|--------------------|
| <b>Antenna-to-Pipe Distance</b>     | 85.0 mm   3.3 in   |
| <b>Bracket-to-Bracket Distance</b>  | 480.0 mm   18.9 in |
| <b>Compatible Diameter, maximum</b> | 115.0 mm   4.5 in  |
| <b>Compatible Diameter, minimum</b> | 60.0 mm   2.4 in   |
| <b>Compatible Length, maximum</b>   | 850.0 mm   33.5 in |
| <b>Compatible Length, minimum</b>   | 600.0 mm   23.6 in |
| <b>Net Weight</b>                   | 5.5 kg   12.1 lb   |

## Regulatory Compliance/Certifications

|                            |  |
|----------------------------|--|
| <b>Agency</b>              | <b>Classification</b>  |
| RoHS 2011/65/EU            | Compliant by Exemption   |
| ISO 9001:2015              | Designed, manufactured and/or distributed under this quality management system |
| China RoHS SJ/T 11364-2014 | Above Maximum Concentration Value (MCV)  |

