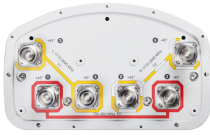


6-port sector antenna, 2x 790–960 and 4x 1710–2690 MHz, 65° HPBW, RET compatible



- Three DualPol® antennas under one radome
- Utilizes AccuRET® actuator(s) on the back of the antenna
- High band antennas are arranged side-by-side for optimum MIMO 4x4/4x2 performance

**This product will be discontinued on: March 27, 2020**

**Replaced By**

RVV-65A-R3

6-port sector antenna, 2x 694–960 and 4x 1695–2690 MHz, 65° HPBW, 3x RET

## Electrical Specifications

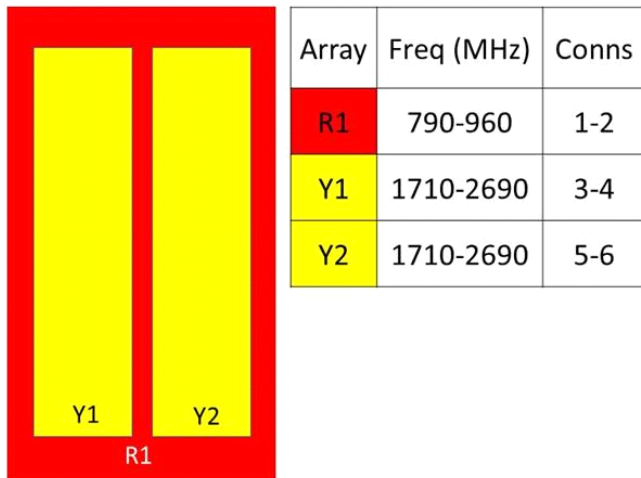
Frequency Band, MHz	790–896	870–960	1710–1880	1850–1990	1920–2180	2300–2500	2500–2690
Gain, dBi	14.4	14.5	17.2	17.4	18.0	18.2	18.4
Beamwidth, Horizontal, degrees	70	69	60	62	63	63	57
Beamwidth, Vertical, degrees	15.5	14.5	7.2	6.7	6.3	5.5	5.2
Beam Tilt, degrees	0–15	0–15	2–12	2–12	2–12	2–12	2–12
USLS (First Lobe), dB	16	15	13	14	15	15	14
Front-to-Back Ratio at 180°, dB	28	29	28	30	30	30	29
Isolation, Cross Polarization, dB	28	28	28	28	28	28	28
Isolation, Inter-band, dB	30	30	30	30	30	30	30
VSWR   Return Loss, dB	1.5   14.0	1.5   14.0	1.5   14.0	1.5   14.0	1.5   14.0	1.5   14.0	1.5   14.0
PIM, 3rd Order, 2 x 20 W, dBc	-150	-150	-150	-150	-150	-150	-150
Input Power per Port, maximum, watts	350	350	350	350	350	300	300
Polarization	±45°	±45°	±45°	±45°	±45°	±45°	±45°
Impedance	50 ohm	50 ohm	50 ohm	50 ohm	50 ohm	50 ohm	50 ohm

## Electrical Specifications, BASTA\*

Frequency Band, MHz	790–896	870–960	1710–1880	1850–1990	1920–2180	2300–2500	2500–2690
Gain by all Beam Tilts, average, dBi	14.0	14.3	16.9	17.3	17.5	17.7	17.9
Gain by all Beam Tilts Tolerance, dB	±0.4	±0.3	±0.7	±0.4	±0.6	±0.7	±0.8
Gain by Beam Tilt, average, dBi	0°   14.2 8°   14.1 15°   13.8	0°   14.4 8°   14.3 15°   13.9	2°   16.9 7°   17.1 12°   16.5	2°   17.2 7°   17.4 12°   16.9	2°   17.5 7°   17.7 12°   17.1	2°   17.8 7°   18.0 12°   17.0	2°   17.9 7°   18.2 12°   17.0
Beamwidth, Horizontal Tolerance, degrees	±1.2	±1.8	±5.3	±6.5	±5.8	±6.1	±4.3
Beamwidth, Vertical Tolerance, degrees	±1.1	±0.8	±0.5	±0.3	±0.5	±0.3	±0.3
USLS, beampeak to 20° above beampeak, dB	16	15	15	16	15	14	12
Front-to-Back Total Power at 180° ± 30°, dB	22	22	25	24	24	24	23
CPR at Boresight, dB	25	24	16	18	17	16	20
CPR at Sector, dB	12	11	11	13	11	7	10

\* CommScope® supports NGMN recommendations on Base Station Antenna Standards (BASTA). To learn more about the benefits of BASTA, [download the whitepaper Time to Raise the Bar on BSAs.](#)

## Array Layout



Array	Freq (MHz)	Conns
R1	790-960	1-2
Y1	1710-2690	3-4
Y2	1710-2690	5-6

Left                      Right  
Bottom

(Sizes of colored boxes are not true depictions of array sizes)

## General Specifications

<b>Operating Frequency Band</b>	1710 – 2690 MHz   790 – 960 MHz
<b>Antenna Type</b>	Sector
<b>Band</b>	Multiband
<b>Performance Note</b>	Outdoor usage

## Mechanical Specifications

<b>RF Connector Quantity, total</b>	6
<b>RF Connector Quantity, low band</b>	2
<b>RF Connector Quantity, high band</b>	4
<b>RF Connector Interface</b>	7-16 DIN Female
<b>Color</b>	Light gray
<b>Grounding Type</b>	RF connector inner conductor and body grounded to reflector and mounting bracket
<b>Radiator Material</b>	Aluminum   Low loss circuit board
<b>Radome Material</b>	Fiberglass, UV resistant
<b>Reflector Material</b>	Aluminum
<b>RF Connector Location</b>	Bottom
<b>Wind Loading, frontal</b>	205.0 N @ 150 km/h 46.1 lbf @ 150 km/h

<b>Wind Loading, lateral</b>	169.0 N @ 150 km/h 38.0 lbf @ 150 km/h
<b>Wind Loading, maximum</b>	396.0 N @ 150 km/h 89.0 lbf @ 150 km/h
<b>Wind Speed, maximum</b>	241 km/h   150 mph

## Dimensions

<b>Length</b>	1412.0 mm   55.6 in
<b>Width</b>	301.0 mm   11.9 in
<b>Depth</b>	180.5 mm   7.1 in
<b>Net Weight, without mounting kit</b>	17.6 kg   38.8 lb

## Remote Electrical Tilt (RET) Information

**Model with Factory Installed AISG 2.0 Actuator** CVV65ASX-3X2

## Packed Dimensions

<b>Length</b>	1672.0 mm   65.8 in
<b>Width</b>	429.0 mm   16.9 in
<b>Depth</b>	329.0 mm   13.0 in
<b>Shipping Weight</b>	30.9 kg   68.1 lb

## Regulatory Compliance/Certifications

### Agency

RoHS 2011/65/EU  
ISO 9001:2015  
China RoHS SJ/T 11364-2014  
CE

### Classification

Compliant by Exemption  
Designed, manufactured and/or distributed under this quality management system  
Above Maximum Concentration Value (MCV)  
Compliant with the relevant CE product directives



## Included Products

**BSAMNT-OFFSET** — Forward Offset Pipe Mounting Kit for 4.5 in (114.3 mm) OD round members

## \* Footnotes

**Performance Note** Severe environmental conditions may degrade optimum performance