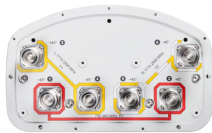


6-port sector antenna, 2x 790–960 and 4x 1710–2690 MHz, 65° HPBW, RET compatible



- Three DualPol® antennas under one radome
- Utilizes AccuRET® actuator(s) on the back of the antenna
- High band antennas are arranged side-by-side for optimum MIMO 4x4/4x2 performance

This product will be discontinued on: March 27, 2020

Replaced By

RVV-65A-R3

6-port sector antenna, 2x 694–960 and 4x 1695–2690 MHz, 65° HPBW, 3x RET

Electrical Specifications

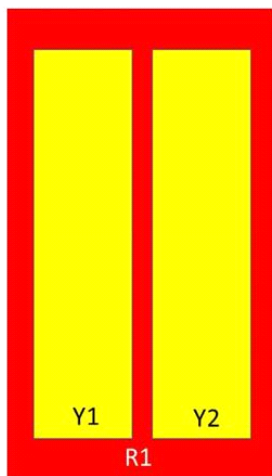
Frequency Band, MHz	790–896	870–960	1710–1880	1850–1990	1920–2180	2300–2500	2500–2690
Gain, dBi	14.4	14.5	17.2	17.4	18.0	18.2	18.4
Beamwidth, Horizontal, degrees	70	69	60	62	63	63	57
Beamwidth, Vertical, degrees	15.5	14.5	7.2	6.7	6.3	5.5	5.2
Beam Tilt, degrees	0–15	0–15	2–12	2–12	2–12	2–12	2–12
USLS (First Lobe), dB	16	15	13	14	15	15	14
Front-to-Back Ratio at 180°, dB	28	29	28	30	30	30	29
Isolation, Cross Polarization, dB	28	28	28	28	28	28	28
Isolation, Inter-band, dB	30	30	30	30	30	30	30
VSWR Return Loss, dB	1.5 14.0	1.5 14.0	1.5 14.0	1.5 14.0	1.5 14.0	1.5 14.0	1.5 14.0
PIM, 3rd Order, 2 x 20 W, dBc	-150	-150	-150	-150	-150	-150	-150
Input Power per Port, maximum, watts	350	350	350	350	350	300	300
Polarization	±45°	±45°	±45°	±45°	±45°	±45°	±45°
Impedance	50 ohm	50 ohm	50 ohm	50 ohm	50 ohm	50 ohm	50 ohm

Electrical Specifications, BASTA*

Frequency Band, MHz	790–896	870–960	1710–1880	1850–1990	1920–2180	2300–2500	2500–2690
Gain by all Beam Tilts, average, dBi	14.0	14.3	16.9	17.3	17.5	17.7	17.9
Gain by all Beam Tilts Tolerance, dB	±0.4	±0.3	±0.7	±0.4	±0.6	±0.7	±0.8
Gain by Beam Tilt, average, dBi	0° 14.2 8° 14.1 15° 13.8	0° 14.4 8° 14.3 15° 13.9	2° 16.9 7° 17.1 12° 16.5	2° 17.2 7° 17.4 12° 16.9	2° 17.5 7° 17.7 12° 17.1	2° 17.8 7° 18.0 12° 17.0	2° 17.9 7° 18.2 12° 17.0
Beamwidth, Horizontal Tolerance, degrees	±1.2	±1.8	±5.3	±6.5	±5.8	±6.1	±4.3
Beamwidth, Vertical Tolerance, degrees	±1.1	±0.8	±0.5	±0.3	±0.5	±0.3	±0.3
USLS, beampeak to 20° above beampeak, dB	16	15	15	16	15	14	12
Front-to-Back Total Power at 180° ± 30°, dB	22	22	25	24	24	24	23
CPR at Boresight, dB	25	24	16	18	17	16	20
CPR at Sector, dB	12	11	11	13	11	7	10

* CommScope® supports NGMN recommendations on Base Station Antenna Standards (BASTA). To learn more about the benefits of BASTA, [download the whitepaper Time to Raise the Bar on BSAs.](#)

Array Layout



Array	Freq (MHz)	Conns
R1	790-960	1-2
Y1	1710-2690	3-4
Y2	1710-2690	5-6

Left Right
Bottom

(Sizes of colored boxes are not true depictions of array sizes)

General Specifications

Operating Frequency Band	1710 – 2690 MHz 790 – 960 MHz
Antenna Type	Sector
Band	Multiband
Performance Note	Outdoor usage

Mechanical Specifications

RF Connector Quantity, total	6
RF Connector Quantity, low band	2
RF Connector Quantity, high band	4
RF Connector Interface	7-16 DIN Female
Color	Light gray
Grounding Type	RF connector inner conductor and body grounded to reflector and mounting bracket
Radiator Material	Aluminum Low loss circuit board
Radome Material	Fiberglass, UV resistant
Reflector Material	Aluminum
RF Connector Location	Bottom
Wind Loading, frontal	205.0 N @ 150 km/h 46.1 lbf @ 150 km/h

CVV65ASX-M | CVV65ASX-3X2

Wind Loading, lateral	169.0 N @ 150 km/h 38.0 lbf @ 150 km/h
Wind Loading, maximum	396.0 N @ 150 km/h 89.0 lbf @ 150 km/h
Wind Speed, maximum	241 km/h 150 mph

Dimensions

Length	1412.0 mm 55.6 in
Width	301.0 mm 11.9 in
Depth	180.5 mm 7.1 in
Net Weight, without mounting kit	17.6 kg 38.8 lb

Remote Electrical Tilt (RET) Information

Model with Factory Installed AISG 2.0 Actuator CVV65ASX-3X2

Packed Dimensions

Length	1672.0 mm 65.8 in
Width	429.0 mm 16.9 in
Depth	329.0 mm 13.0 in
Shipping Weight	30.9 kg 68.1 lb

Regulatory Compliance/Certifications

Agency

RoHS 2011/65/EU
ISO 9001:2015
China RoHS SJ/T 11364-2014
CE

Classification

Compliant by Exemption
Designed, manufactured and/or distributed under this quality management system
Above Maximum Concentration Value (MCV)
Compliant with the relevant CE product directives



Included Products

BSAMNT-OFFSET — Forward Offset Pipe Mounting Kit for 4.5 in (114.3 mm) OD round members

* Footnotes

Performance Note Severe environmental conditions may degrade optimum performance

BSAMNT-OFFSET



Forward Offset Pipe Mounting Kit for 4.5 in (114.3 mm) OD round members

General Specifications

Application	Outdoor
Includes	Brackets Hardware
Package Quantity	1

Mechanical Specifications

Color	Silver
Material Type	Galvanized steel

Dimensions

Compatible Diameter, maximum	115.0 mm 4.5 in
Compatible Diameter, minimum	60.0 mm 2.4 in
Net Weight	3.5 kg 7.7 lb

Regulatory Compliance/Certifications

Agency	Classification
RoHS 2011/65/EU	Compliant by Exemption
ISO 9001:2015	Designed, manufactured and/or distributed under this quality management system
China RoHS SJ/T 11364-2014	Above Maximum Concentration Value (MCV)
CE	Compliant with the relevant CE product directives

