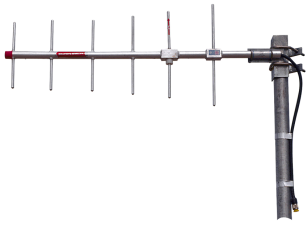


# DB436-C



1-port sector (yagi) antenna, 450–470 MHz, 60° HPBW, fixed electrical tilt

- Highly directional coverage and good front-to-back ratio
- Rugged, reliable design
- Stacked arrays

## Electrical Specifications

<b>Frequency Band, MHz</b>	<b>450–470</b>
Gain, dBi	12.1
Beamwidth, Horizontal, degrees	60
Beamwidth, Vertical, degrees	44.0
Beam Tilt, degrees	0
Front-to-Back Ratio at 180°, dB	16
VSWR   Return Loss, dB	1.5   14.0
Input Power per Port, maximum, watts	250
Polarization	Vertical
Impedance	50 ohm

## General Specifications

<b>Operating Frequency Band</b>	450 – 470 MHz
<b>Antenna Type</b>	Sector
<b>Band</b>	Single band
<b>Includes</b>	U-bolts
<b>Performance Note</b>	Outdoor usage

## Mechanical Specifications

<b>RF Connector Quantity, total</b>	1
<b>RF Connector Quantity, low band</b>	1
<b>RF Connector Interface</b>	N Male
<b>Color</b>	Silver
<b>Grounding Type</b>	RF connector inner conductor and body grounded to reflector and mounting bracket
<b>Radiator Material</b>	Aluminum
<b>RF Connector Location</b>	Bottom
<b>Wind Loading, maximum</b>	80.1 N @ 100 mph 18.0 lbf @ 100 mph
<b>Wind Speed, maximum</b>	201 km/h   125 mph

## Dimensions

<b>Length</b>	889.0 mm   35.0 in
---------------	--------------------

# DB436-C

---

**Width** 368.3 mm | 14.5 in  
**Depth** 25.4 mm | 1.0 in  
**Net Weight, without mounting kit** 3.2 kg | 7.1 lb

## Regulatory Compliance/Certifications

### Agency

RoHS 2011/65/EU  
ISO 9001:2015  
China RoHS SJ/T 11364-2014  
CE

### Classification

Compliant by Exemption  
Designed, manufactured and/or distributed under this quality management system  
Above Maximum Concentration Value (MCV)  
Compliant with the relevant CE product directives



## Included Products

11653 — V-Bolt Mounting Kit for 3 in (76.2 mm) max OD round members. Set of two V-bolts clamp sets.

## \* Footnotes

**Performance Note** Severe environmental conditions may degrade optimum performance