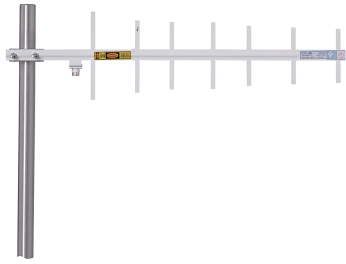


ASPJ810



1-port sector antenna, 870–960 MHz, 60° HPBW, fixed electrical tilt

- Enclosed driven element protects against icing, water penetration, and corrosion
- Unique mounts allow vertical or horizontal polarization

Electrical Specifications

Frequency Band, MHz	870–960
Gain, dBi	12.1
Beamwidth, Horizontal, degrees	60
Beamwidth, Vertical, degrees	30.0
Beam Tilt, degrees	0
Front-to-Back Ratio at 180°, dB	20
VSWR Return Loss, dB	1.5 14.0
Input Power per Port, maximum, watts	150
Polarization	Vertical
Impedance	50 ohm

General Specifications

Operating Frequency Band	870 – 960 MHz
Antenna Type	Sector
Band	Single band
Includes	U-bolts
Performance Note	Outdoor usage

Mechanical Specifications

RF Connector Quantity, total	1
RF Connector Quantity, low band	1
RF Connector Interface	N Female
Color	Off-white
Grounding Type	RF connector inner conductor and body grounded to reflector and mounting bracket
Radiator Material	Aluminum
RF Connector Location	Bottom
Wind Loading, maximum	71.2 N @ 100 mph 16.0 lbf @ 100 mph
Wind Speed, maximum	241 km/h 150 mph

Dimensions

Length	685.8 mm 27.0 in
---------------	--------------------

ASPJ810

Width 180.3 mm | 7.1 in
Depth 5.8 mm | 0.2 in
Net Weight, without mounting kit 1.7 kg | 3.7 lb

Regulatory Compliance/Certifications

Agency

RoHS 2011/65/EU
ISO 9001:2015
China RoHS SJ/T 11364-2014
CE

Classification

Compliant by Exemption
Designed, manufactured and/or distributed under this quality management system
Above Maximum Concentration Value (MCV)
Compliant with the relevant CE product directives



* Footnotes

Performance Note Severe environmental conditions may degrade optimum performance