



# Preferred ordering guide for NETCONNECT

APAC Region

COMMSCOPE®



# Contents

## Copper solutions

<b>Category 6A products .....</b>	<b>3</b>
Category 6A U/UTP copper cables.....	3
Category 6A modular U/UTP panels .....	3
Category 6A U/UTP information outlets .....	4
- SL opening (without dust cover) .....	4
- SL opening (with dust cover) .....	4
Category 6A U/UTP copper patch cords .....	5
Category 6A F/UTP copper cables.....	6
Category 6A modular shielded panels.....	6
Category 6A shielded information outlets .....	7
Category 6A F/UTP copper patch cords .....	7

<b>Category 6 products .....</b>	<b>8</b>
Category 6 U/UTP copper cables .....	8
Category 6 U/UTP copper panels.....	8
Category 6 modular U/UTP panels.....	8
Category 6 U/UTP information outlets.....	9
- SL opening (without dust cover) .....	9
- SL opening (with dust cover) .....	9
- Keystone opening .....	9
Category 6 U/UTP copper patch cords.....	10
Category 6 F/UTP copper cables.....	11
Category 6 modular shielded panels .....	11
Category 6 shielded information outlets.....	11
Category 6 F/UTP copper patch cords.....	11

## Fiber Solutions..... 12

Fiber optic cables .....	12
- Indoor cables .....	12
- Indoor/outdoor cables .....	13
- Outside plant cables .....	13

## Fiber connectivity..... 14

Fiber optic panels.....	14
- 1000-type panels .....	14
Splice cassettes (1000-type panel compatible).....	14
Adapter panels (1000-type panel compatible).....	14
Fiber patch cords .....	15
Fiber pigtails .....	15

The CommScope NETCONNECT ordering guide for the Asia Pacific region contains commonly ordered copper and fiber structured cabling products. This information is subject to change. For a comprehensive, up-to-date listing of CommScope products, please go to [www.commscope.com](http://www.commscope.com).



Material ID	Description	Rating	AWG	Jacket Color	Length	Packaging
<b>Category 6A U/UTP cables</b>						
884031004/10	CS44R, Category 6A, 4 Pair, UTP	CMR	23 AWG	Blue	305 m/ 1000 ft	Reel
884019304/10	CS44R, Category 6A, 4 Pair, UTP	CMR	23 AWG	Gray	305 m/ 1000 ft	Reel
884028704/10	CS44Z3, Category 6A, 4 Pair, UTP	LSZH	23 AWG	Blue	305 m/ 1000 ft	Reel
884026504/10	CS44Z3, Category 6A, 4 Pair, UTP	LSZH	23 AWG	Gray	305 m/ 1000 ft	Reel
884036104/10	CS44Z3, Category 6A, 4 Pair, UTP	LSZH	23 AWG	White	305 m/ 1000 ft	Reel



Material ID	Description	Number of ports	Rack Units
<b>Category 6A U/UTP modular panels (Jacks not included)</b>			
1445159	RJ45 Patch Panel Modular Dynamic Angle Right/Left, Category 6A, 24-port, 1U, unshielded, black	24	1
1445163	RJ45 Patch Panel Modular Dynamic Angle Right/Left, Category 6A, 48-port, 2U, unshielded, black	48	2

NOTE: \* Asterisk indicates that Product Numbers may not be available until late 2017

Material ID	Description	Color	Dust cover
<b>Category 6A unshielded U/UTP jacks</b>			
<b>SL Opening (without dust cover)</b>			
1933476-1	Category 6A U/UTP SL jack	Almond	No dust cover
1933476-2	Category 6A U/UTP SL jack	Black	No dust cover
1933476-4	Category 6A U/UTP SL jack	Gray	No dust cover
1933476-5	Category 6A U/UTP SL jack	Orange	No dust cover
1933476-6	Category 6A U/UTP SL jack	Blue	No dust cover
1933476-7	Category 6A U/UTP SL jack	Red	No dust cover
1933476-8	Category 6A U/UTP SL jack	Yellow	No dust cover
1933476-9	Category 6A U/UTP SL jack	Green	No dust cover
1-1933476-0	Category 6A U/UTP SL jack	Violet	No dust cover
1-1933476-1	Category 6A U/UTP SL jack	Electrical ivory	No dust cover
1-1933476-3	Category 6A U/UTP SL jack	Alpine white	No dust cover



Material ID	Description	Color	Dust cover
<b>Category 6A U/UTP jacks</b>			
<b>SL Opening (with dust cover)</b>			
2111676-1	Category 6A U/UTP SL jack	Almond	With dust cover
2111676-2	Category 6A U/UTP SL jack	Black	With dust cover
2111676-4	Category 6A U/UTP SL jack	Gray	With dust cover
2111676-5	Category 6A U/UTP SL jack	Orange	With dust cover
2111676-6	Category 6A U/UTP SL jack	Blue	With dust cover
2111676-7	Category 6A U/UTP SL jack	Red	With dust cover
2111676-8	Category 6A U/UTP SL jack	Yellow	With dust cover



### Category 6A U/UTP products

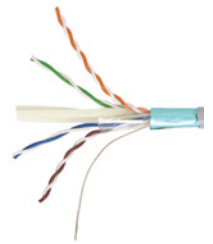


Material ID	Description	Rating	Color
<b>Category 6A U/UTP patch cords - Excluding India</b>			
6645-2-805-##	Category 6A, U/UTP	CM	White
6645-2-825-##	Category 6A, U/UTP	CM	Blue
6645-2-865-##	Category 6A, U/UTP	CM	Gray
6645-2-845-##	Category 6A, U/UTP	CM	Green
6645-2-855-##	Category 6A, U/UTP	CM	Orange
6645-2-815-##	Category 6A, U/UTP	CM	Red
6645-2-835-##	Category 6A, U/UTP	CM	Yellow
6645-2-885-##	Category 6A, U/UTP	CM	Black

Material ID	Description	Rating	Color
<b>Category 6A U/UTP patch cords - India only</b>			
NPC6AUVDB-WT###F	NPC Category 6A, U/UTP	CM	White
NPC6AUVDB-BL###F	NPC Category 6A, U/UTP	CM	Blue
NPC6AUVDB-GY###F	NPC Category 6A, U/UTP	CM	Gray
NPC6AUVDB-GN###F	NPC Category 6A, U/UTP	CM	Green
NPC6AUVDB-OR###F	NPC Category 6A, U/UTP	CM	Orange
NPC6AUVDB-RD###F	NPC Category 6A, U/UTP	CM	Red
NPC6AUVDB-YL###F	NPC Category 6A, U/UTP	CM	Yellow
NPC6AUVDB-BK###F	NPC Category 6A, U/UTP	CM	Black

NOTE: Replace ## with length. CM rated patch cords ordered in feet.  
 001 = 1 feet  
 015 = 15 feet

### Category 6A U/UTP products



Material ID	Description	Rating	AWG	Jacket Color	Length	Packaging
<b>Category 6A F/UTP shielded cables</b>						
1859222-2	Category 6A, 4 pair, F/UTP	CM	23 AWG	White	305 m/ 1000 ft	Reel
1859222-6	Category 6A, 4 pair, F/UTP	CM	23 AWG	Blue	305 m/ 1000 ft	Reel
1859349-4	Category 6A, 4 pair, F/UTP	CMR	23 AWG	Gray	305 m/ 1000 ft	Reel
1859218-2	Category 6A, 4 pair, F/UTP	LSZH	23 AWG	White	305 m/ 1000 ft	Reel
1859218-6	Category 6A, 4 pair, F/UTP	LSZH	23 AWG	Blue	305 m/ 1000 ft	Reel



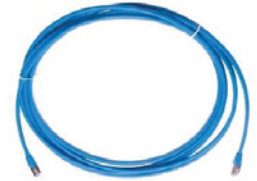
Material ID	Description
<b>Category 6A F/UTP modular shielded panels</b>	
1933319-2	RJ45 patch panel modular shielded HSG, Category 6A, RJ45, standard, 24-port, front-load 6-port, black (Jacks included)
1933321-2	RJ45 patch panel modular shielded HSG, Category 6A, RJ45, unloaded, angled, 24-port, front-load 6-port, black (Jacks included)
1933307-1	Multimedia SL series patch panel, front-load 6 module, straight, unloaded, 24-port (No jacks)
1933309-1	Multimedia SL series patch panel, front-load 6 module, angled, unloaded, 24-port (No jacks)

### Category 6A F/UTP products

Material ID	Description
<b>Category 6A F/UTP jacks</b>	
<b>SL Opening</b>	
2153001-1	Modular jack, Category 6A, shielded F/UTP, 8-position, without dust cover, silver gray
2153000-1	Modular jack, Category 6A, shielded F/UTP, 8-position, with dust cover, silver gray



Material ID	Description	Type	Rating	Color
<b>Category 6A shielded patch cords</b>				
Y-1711815-X	Category 6A, S/FTP	S/FTP	LSZH	White
Y-1711816-X	Category 6A, S/FTP	S/FTP	LSZH	Blue
Y-1711817-X	Category 6A, S/FTP	S/FTP	LSZH	Gray
Y-1711820-X	Category 6A, S/FTP	S/FTP	LSZH	Green
Y-2153011-X	Category 6A, S/FTP	S/FTP	LSZH	Orange
Y-1711819-X	Category 6A, S/FTP	S/FTP	LSZH	Red
Y-1711818-X	Category 6A, S/FTP	S/FTP	LSZH	Yellow
Y-1711821-X	Category 6A, S/FTP	S/FTP	LSZH	Black
Y-1859517-X	Category 6A, F/UTP	F/UTP	LSZH	White
Y-1859514-X	Category 6A, F/UTP	F/UTP	LSZH	Blue
Y-1859513-X	Category 6A, F/UTP	F/UTP	LSZH	Gray
Y-1859515-X	Category 6A, F/UTP	F/UTP	LSZH	Green
Y-1859519-X	Category 6A, F/UTP	F/UTP	LSZH	Orange
Y-1859516-X	Category 6A, F/UTP	F/UTP	LSZH	Red
Y-1859518-X	Category 6A, F/UTP	F/UTP	LSZH	Yellow
Y-1859512-X	Category 6A, F/UTP	F/UTP	LSZH	Black

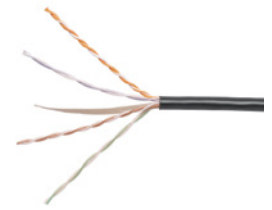


NOTE: Y- -X Length  
 1- -1 0.5 meters  
 0- -1 1.0 meters  
 0- -2 2.0 meters  
 0- -3 3.0 meters  
 0- -5 5.0 meters  
 1- -0 10.0 meters

Material ID	Description	Type	Rating	Color
<b>Category 6A shielded patch cords - India Only</b>				
NPC6ASZDB-WT###M	NPC Category 6A, S/FTP	S/FTP	LSZH	White
NPC6ASZDB-BL###M	NPC Category 6A, S/FTP	S/FTP	LSZH	Blue
NPC6ASZDB-GY###M	NPC Category 6A, S/FTP	S/FTP	LSZH	Gray
NPC6ASZDB-GN###M	NPC Category 6A, S/FTP	S/FTP	LSZH	Green
NPC6ASZDB-OR###M	NPC Category 6A, S/FTP	S/FTP	LSZH	Orange
NPC6ASZDB-RD###M	NPC Category 6A, S/FTP	S/FTP	LSZH	Red
NPC6ASZDB-YL###M	NPC Category 6A, S/FTP	S/FTP	LSZH	Yellow
NPC6ASZDB-BK###M	NPC Category 6A, S/FTP	S/FTP	LSZH	Black

NOTE: Replace ## with length. CM rated patch cords ordered in feet.  
 001 = 1 feet  
 015 = 15 feet

## Category 6 U/UTP products



Material ID	Description	Rating	AWG	Jacket Color	Length	Packaging
<b>Category 6 U/UTP cables</b>						
884028514/10	CS31CM, Category 6, 4 pair, U/UTP	CM	23 AWG	White	305 m/ 1000 ft	CommPak
884027814/10	CS31CM, Category 6, 4 pair, U/UTP	CM	23 AWG	Gray	305 m/ 1000 ft	CommPak
884016914/10	CS31CM, Category 6, 4 pair, U/UTP	CM	23 AWG	Blue	305 m/ 1000 ft	CommPak
1427071-2	Category 6, 4 pair, U/UTP	CM	24 AWG	White	305 m/ 1000 ft	Reel-in-Box
1427071-4	Category 6, 4 pair, U/UTP	CM	24 AWG	Gray	305 m/ 1000 ft	Reel-in-Box
1427071-6	Category 6, 4 pair, U/UTP	CM	24 AWG	Blue	305 m/ 1000 ft	Reel-in-Box
884024314/10	CS31R, Category 6, 4 pair, U/UTP	CMR	23 AWG	White	305 m/ 1000 ft	CommPak
884031114/10	CS31R, Category 6, 4 pair, U/UTP	CMR	23 AWG	Gray	305 m/ 1000 ft	CommPak
884022314/10	CS31R, Category 6, 4 pair, U/UTP	CMR	23 AWG	Blue	305 m/ 1000 ft	CommPak
884036414/10	CS31Z1, Category 6, 4 pair, U/UTP	LSZH	23 AWG	White	305 m/ 1000 ft	CommPak
884035914/10	CS31Z1, Category 6, 4 pair, U/UTP	LSZH	23 AWG	Gray	305 m/ 1000 ft	CommPak
884037614/10	CS31Z1, Category 6, 4 pair, U/UTP	LSZH	23 AWG	Blue	305 m/ 1000 ft	CommPak
1427070-2	Category 6, 4 pair, U/UTP	LSZH	24 AWG	White	305 m/ 1000 ft	Reel-in-Box
1427070-6	Category 6, 4 pair, U/UTP	LSZH	24 AWG	Blue	305 m/ 1000 ft	Reel-in-Box
884037814/10	CS37Z3, Category 6, 4 pair, U/UTP	LSZH	23 AWG	Black	305 m/ 1000 ft	CommPak
884036914/10	CS37Z3, Category 6, 4 pair, U/UTP	LSZH	23 AWG	White	305 m/ 1000 ft	CommPak
884036314/10	CS37Z3 Category 6, 4 pair, U/UTP	LSZH	23 AWG	Gray	305 m/ 1000 ft	CommPak
884037414/10	CS37Z3, Category 6, 4 pair, U/UTP	LSZH	23 AWG	Blue	305 m/ 1000 ft	CommPak

Material ID	Description	Rating	AWG	Jacket Color	Length	Packaging
<b>Category 6 U/UTP cables - India only</b>						
6-1427200-4	Category 6, 4 pair, U/UTP	CMR	23 AWG	Gray	305 m/ 1000 ft	Reel-in-Box
6-1427200-6	Category 6, 4 pair, U/UTP	CMR	23 AWG	Blue	305 m/ 1000 ft	Reel-in-Box
1967075-2	Category 6, 4 pair, U/UTP	PVC	24 AWG	Gray	305 m/ 1000 ft	Reel-in-Box



Material ID	Description
<b>Category 6 U/UTP patch panels</b>	
1375014-2	RJ45 patch panel, SL series, modular standard, Category 6, loaded, 24-port (Includes jacks)
1375015-2	RJ45 patch panel, SL series, modular standard, Category 6, unshielded, loaded, 48-port (Includes jacks)
1324314	Patch panel, dynamic angle, Category 6, distribution module, 1U, 24-port
1324315	Patch panel, dynamic angle, Category 6, distribution module, 2U, 48-port

NOTE: Can be used with shielded and unshielded jacks.



### Category 6A F/UTP products



Material ID	Description	Color	Dust Cover
<b>Category 6 U/UTP jacks</b>			
<b>SL-Series opening without dust cover</b>			
1375055-1	Category 6 U/UTP jack, SL	Almond	No dust cover
1375055-2	Category 6 U/UTP jack, SL	Black	No dust cover
1375055-4	Category 6 U/UTP jack, SL	Gray	No dust cover
1375055-5	Category 6 U/UTP jack, SL	Orange	No dust cover
1375055-6	Category 6 U/UTP jack, SL	Blue	No dust cover
1375055-7	Category 6 U/UTP jack, SL	Red	No dust cover
1375055-8	Category 6 U/UTP jack, SL	Yellow	No dust cover
1375055-9	Category 6 U/UTP jack, SL	Green	No dust cover
1-1375055-0	Category 6 U/UTP jack, SL	Violet	No dust cover
1-1375055-1	Category 6 U/UTP jack, SL	Electrical ivory	No dust cover
1-1375055-3	Category 6 U/UTP jack, SL	Alpine White	No dust cover
<b>SL-Series opening with dust cover</b>			
1375187-1	Category 6 U/UTP jack, SL	Almond	With dust cover
1375187-2	Category 6 U/UTP jack, SL	Black	With dust cover
1375187-4	Category 6 U/UTP jack, SL	Gray	With dust cover
1375187-5	Category 6 U/UTP jack, SL	Orange	With dust cover
1375187-6	Category 6 U/UTP jack, SL	Blue	With dust cover
1375187-7	Category 6 U/UTP jack, SL	Red	With dust cover
1375187-8	Category 6 U/UTP jack, SL	Yellow	With dust cover
1375187-9	Category 6 U/UTP jack, SL	Green	With dust cover
1-1375187-0	Category 6 U/UTP jack, SL	Violet	With dust cover
1-1375187-1	Category 6 U/UTP jack, SL	Electrical ivory	With dust cover
1-1375187-3	Category 6 U/UTP jack, SL	Alpine white	With dust cover
<b>Keystone opening</b>			
2291216-1	Category 6 U/UTP jack, keystone	Almond	–
2291216-2	Category 6 U/UTP jack, keystone	Black	–
2291216-4	Category 6 U/UTP jack, keystone	Gray	–
2291216-5	Category 6 U/UTP jack, keystone	Orange	–
2291216-6	Category 6 U/UTP jack, keystone	Blue	–
2291216-7	Category 6 U/UTP jack, keystone	Red	–
2291216-8	Category 6 U/UTP jack, keystone	Yellow	–
2291216-9	Category 6 U/UTP jack, keystone	Green	–
1-2291216-0	Category 6 U/UTP jack, keystone	Violet	–
1-2291216-1	Category 6 U/UTP jack, keystone	Electrical ivory	–
1-2291216-3	Category 6 U/UTP jack, keystone	Alpine white	–

### Category 6 U/UTP products



Material ID	Description	Rating	Color
<b>Category 6 U/UTP patch cords - CM-rated</b>			
Y-1859250-X	Category 6, U/UTP	CM	White
Y-1859247-X	Category 6, U/UTP	CM	Blue
Y-1859246-X	Category 6, U/UTP	CM	Gray
Y-1859248-X	Category 6, U/UTP	CM	Green
Y-1859245-X	Category 6, U/UTP	CM	Orange
Y-1859249-X	Category 6, U/UTP	CM	Red
Y-1859251-X	Category 6, U/UTP	CM	Yellow
Y-1859252-X	Category 6, U/UTP	CM	Black

NOTE: Other lengths are available. Replace last digit with length (in meters).

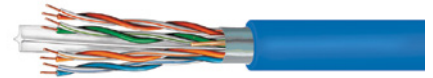
Material ID	Description	Rating	Color
<b>Category 6 U/UTP patch cords - LSZH</b>			
Y-1859280-X	Category 6, U/UTP	LSZH	White
Y-1859277-X	Category 6, U/UTP	LSZH	Blue
Y-1859275-X	Category 6, U/UTP	LSZH	Gray
Y-1859278-X	Category 6, U/UTP	LSZH	Green
Y-1859276-X	Category 6, U/UTP	LSZH	Orange
Y-1859279-X	Category 6, U/UTP	LSZH	Red
Y-1859281-X	Category 6, U/UTP	LSZH	Yellow
Y-1859282-X	Category 6, U/UTP	LSZH	Black

NOTE: Y- -X Length  
 1- -1 0.5 meters  
 0- -1 1.0 meters  
 0- -2 2.0 meters  
 0- -3 3.0 meters  
 0- -5 5.0 meters  
 1- -0 10.0 meters

Material ID	Description	Rating	Color
<b>Category 6 U/UTP patch cords - India only</b>			
NPC06UVDB-WT###F	NPC Category 6, U/UTP	CM	White
NPC06UVDB-BL###F	NPC Category 6, U/UTP	CM	Blue
NPC06UVDB-GY###F	NPC Category 6, U/UTP	CM	Gray
NPC06UVDB-GN###F	NPC Category 6, U/UTP	CM	Green
NPC06UVDB-OR###F	NPC Category 6, U/UTP	CM	Orange
NPC06UVDB-RD###F	NPC Category 6, U/UTP	CM	Red
NPC06UVDB-YL###F	NPC Category 6, U/UTP	CM	Yellow
NPC06UVDB-BK###F	NPC Category 6, U/UTP	CM	Black

NOTE: Replace ## with length. CM rated patch cords ordered in feet.  
 001 = 1 feet  
 015 = 15 feet

## Category 6 F/UTP products



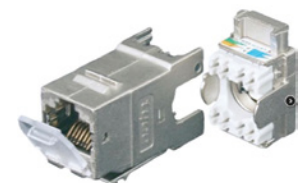
Material ID	Description	Rating	AWG	Jacket Color	Length	Packaging
<b>Category 6 F/UTP shielded cables</b>						
1859204-2	Copper cable, Category 6, 4 pair, FTP	CM	23	White	305 m/1000 ft	Reel
1859204-6	Copper cable, Category 6, 4 pair, FTP	CM	23	Blue	305 m/1000 ft	Reel
1427213-1	Copper cable, Category 6, 4 pair, FTP	LSZH	23	White	305 m/1000 ft	Reel
1427213-9	Copper cable, Category 6, 4 pair, FTP	LSZH	23	White	500 m/1640 ft	Reel

Material ID	Description
<b>Category 6 F/UTP modular shielded panels</b>	
1933307-1	Multimedia SL series patch panel, front-load 6 module, straight, unloaded, 24-port (No jacks)
1933309-1	Multimedia SL series patch panel, front-load 6 module, angled, unloaded, 24-port (No jacks)
1933308-1	Multimedia SL series patch panel, front-load 6 module, straight, unloaded, 48-port (No jacks)
1933310-1	Multimedia SL series patch panel, front-load 6 module, angled, unloaded, 48-port

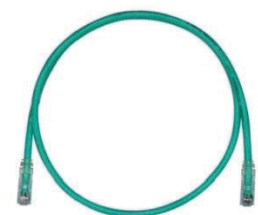


NOTE: Can be used with shielded and unshielded SL series jacks.

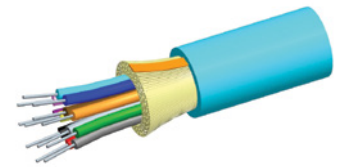
Material ID	Description
<b>Category 6 F/UTP shielded jacks - SL series</b>	
1711160-1	SL series modular jack, Category 6, 4 pair, for FTP cables, rear exit, with dust cover
1711342-1	SL series modular jack, Category 6, 4 pair, for FTP cables, rear exit, without dust cover
1711998-1	SL series modular jack, Category 6, 4 pair, for FTP cables, basic with dust cover
1711999-1	SL series modular jack, Category 6, 4 pair, for FTP cables, basic without dust cover
1711343-1	SL series modular jack, Category 6, 4 pair, for FTP cables, side exit, without dust cover
1711295-1	SL series modular jack, Category 6, 4 pair, for FTP cables, side exit, with dust cover



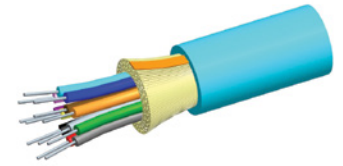
Material ID	Description (jacket/ boot)	Color
<b>Category 6 F/UTP shielded patch cords - LSZH</b>		
Y-1427226-X	Category 6, S/FTP, LSZH	White/White
Y-1427267-X	Category 6, S/FTP, LSZH	White/Yellow
Y-1427268-X	Category 6, S/FTP, LSZH	White/Red
Y-1427269-X	Category 6, S/FTP, LSZH	White/Blue
Y-1427270-X	Category 6, S/FTP, LSZH	White/Green
Y-1427271-X	Category 6, S/FTP, LSZH	White/Black



NOTE: Y- -X Length  
 1- -1 0.5 meters  
 0- -1 1.0 meters  
 0- -2 2.0 meters  
 0- -3 3.0 meters  
 0- -5 5.0 meters  
 1- -0 10.0 meters



Material ID	Description	Environment	Fiber type	Fiber Count	Availability
<b>Fiber optic cables</b>					
1-1859416-3	Fiber optic cable, indoor, 2F, OFNR, 1KM	Indoor OFNR	OM3	2	North Asia Only
1-1859416-4	Fiber optic cable, indoor, 2F, SM, OFNR, 1KM	Indoor OFNR	OS2	2	–
1-1859417-2	Fiber optic cable, indoor, 4F, OFNR, 1KM	Indoor OFNR	OM2	4	ASEAN/ANZ Only
1-1859417-3	Fiber optic cable, indoor, 4F, OFNR, 1KM	Indoor OFNR	OM3	4	–
1-1859417-4	Fiber optic cable, indoor, 4F, SM, OFNR, 1KM	Indoor OFNR	OS2	4	–
1-1859417-5	Fiber optic cable, indoor, 4F, OFNR, 1KM	Indoor OFNR	OM4	4	ASEAN/ANZ Only
1-1859418-2	Fiber optic cable, indoor, 6F, OFNR, 1KM	Indoor OFNR	OM2	6	ASEAN/ANZ Only
1-1859418-3	Fiber optic cable, indoor, 6F, OFNR, 1KM	Indoor OFNR	OM3	6	–
1-1859418-4	Fiber optic cable, indoor, 6F, SM, OFNR, 1KM	Indoor OFNR	SM	6	–
1-1859418-5	Fiber optic cable, indoor, 6F, OFNR, 1KM	Indoor OFNR	OM4	6	ASEAN/ANZ Only
1-1859419-3	Fiber optic cable, indoor, 8F, OFNR, 1KM	Indoor OFNR	OM3	8	–
1-1859419-4	Fiber optic cable, indoor, 8F, SM, OFNR, 1 KM	Indoor OFNR	SM	8	North Asia Only
1-1859420-2	Fiber optic cable, indoor, 12F, OFNR, 1KM	Indoor OFNR	OM2	12	ASEAN/ANZ Only
1-1859420-3	Fiber optic cable, indoor, 12F, OFNR, 1KM	Indoor OFNR	OM3	12	–
1-1859420-4	Fiber optic cable, indoor, 12F, SM, OFNR, 1KM	Indoor OFNR	OS2	12	ASEAN/ANZ Only
1-1859421-2	Fiber optic cable, indoor, 24F, OFNR, 1KM	Indoor OFNR	OM2	12	ASEAN/ANZ Only
1-1859421-3	Fiber optic cable, indoor, 24F, OFNR, 1KM	Indoor OFNR	OM3	24	ASEAN/ANZ Only
1-1859421-4	Fiber optic cable, indoor, 24F, SM, OFNR, 1KM	Indoor OFNR	OS2	24	–
1-1859422-3	Fiber optic cable, indoor, 36F, OFNR, xKM	Indoor OFNR	OM3	36	North Asia Only
1-1859422-4	Fiber optic cable, indoor, 36F, SM, OFNR, xKM	Indoor OFNR	Indoor OFNR	36	North Asia Only
1-1859423-3	Fiber optic cable, indoor, 48F, OFNR, xKM	Indoor OFNR	Indoor OFNR	48	North Asia Only
1-1859423-4	Fiber optic cable, indoor, 48F, SM, OFNR, 1KM	Indoor OFNR	Indoor OFNR	48	–
1-1859424-3	Fiber optic cable, indoor, 72F, OFNR, xKM	Indoor OFNR	Indoor OFNR	72	North Asia Only
1-1859424-4	Fiber optic cable, indoor, 72F, SM, OFNR, xKM	Indoor OFNR	Indoor OFNR	72	North Asia Only
1-1859425-3	Fiber optic cable, ZIP, 3.0MM, 2F, OFN	Indoor	OM3	2	–
2-599142-4	Twin zip cable 2F	Indoor	OS2	2	–
2-599142-3	Twin zip cable 2F	Indoor	OM3	2	–



Material ID	Description	Environment	Fiber type	Fiber Count
<b>Fiber optic cables</b>				
2-599144-4	Internal/external office distribution cable 4F, yellow, LSZH	Indoor/outdoor LSZH	OS2	4
2-599145-4	Internal/external office distribution cable 6F, yellow, LSZH	Indoor/outdoor LSZH	OS2	6
2-599146-4	Internal/external office distribution cable 8F, yellow, LSZH	Indoor/outdoor LSZH	OS2	8
2-599148-4	Internal/external office distribution cable 12F, yellow, LSZH	Indoor/outdoor LSZH	OS2	12
2-1716029-4	Internal/external office distribution cable 24F, yellow, LSZH	Indoor/outdoor LSZH	OS2	24
2-599144-3	Internal/external office distribution cable 4F, aqua, LSZH	Indoor/outdoor LSZH	OM3	4
2-599145-3	Internal/external office distribution cable 6F, aqua, LSZH	Indoor/outdoor LSZH	OM3	6
2-599146-3	Internal/external office distribution cable 8F, aqua, LSZH	Indoor/outdoor LSZH	OM3	8
2-599148-3	Internal/external office distribution cable 12F, aqua, LSZH	Indoor/outdoor LSZH	OM3	12
2-1716029-3	Internal/external office distribution cable 24F, aqua, LSZH	Indoor/outdoor LSZH	OM3	24
2-599144-2	Internal/external office distribution cable 4F, aqua, LSZH	Indoor/outdoor LSZH	OM4	4
2-599145-2	Internal/external office distribution cable 6F, aqua, LSZH	Indoor/outdoor LSZH	OM4	6
2-599146-2	Internal/external office distribution cable 8F, aqua, LSZH	Indoor/outdoor LSZH	OM4	8
2-599148-2	Internal/external office distribution cable 12F, aqua, LSZH	Indoor/outdoor LSZH	OM4	12
2-1716029-2	Internal/external office distribution cable 24F, aqua, LSZH	Indoor/outdoor LSZH	OM4	24
2-599682-4	External loose tube cable with corrugated steel armour - rodent resistant 6F	Outdoor metallic	OS2	6
2-599692-4	External loose tube cable with corrugated steel armour - rodent resistant 8F	Outdoor metallic	OS2	8
2-599683-4	External loose tube cable with corrugated steel armour - rodent resistant 12F	Outdoor metallic	OS2	12
2-599690-4	External loose tube cable with corrugated steel armour - rodent resistant 24F	Outdoor metallic	OS2	24

Material ID	Description
<b>1000-type fiber panels</b>	
1348876-4	Fiber optic termination panel, 1U, 19 in, unloaded, black, accepts 3 adaptor plates or splice cassettes
559542-3	Fiber optic termination panel, 2 RU, 19 in, unloaded, 24 ports, black, accepts 4 adaptor plates or splice cassettes
1674927	Fiber optic series empty rack/cabinet mount panel, 4 RU, accommodates 12 adapter panels or splice cassettes



Material ID	Product number	Description
<b>1000-type splice cassettes</b>		
EK5984-001	PNL-CS-12LCX-PT	Splicing cassette, 12 LC LazrSPEED, 900µm
EK5979-001	PNL-CS-24LCX-PT	Splicing cassette, 24 LC LazrSPEED, 900µm
EK5974-001	PNL-CS-12SCX-PT	Splicing cassette, 12 SC LazrSPEED, 900µm
EK5983-001	PNL-CS-12LCW-PT	Splicing cassette, 12 LC TeraSPEED, 900µm
EK5978-001	PNL-CS-24LCW-PT	Splicing cassette, 24 LC TeraSPEED, 900µm
EK5973-001	PNL-CS-12SCW-PT	Splicing cassette, 12 SC TeraSPEED, 900µm
EM2979-001	PNL-CS-12LCX	Splicing cassette, 12 LC LazrSPEED, no pigtail
EM2978-001	PNL-CS-12LCW	Splicing cassette, 12 LC TeraSPEED, no pigtail
EM2977-001	PNL-CS-12LAW	Splicing cassette, 12 LC APC TeraSPEED, no pigtail
EM2976-001	PNL-CS-24LCX	Splicing cassette, 24 LC LazrSPEED, no pigtail
EM2975-001	PNL-CS-24LCW	Splicing cassette, 24 LC TeraSPEED, no pigtail
EM2974-001	PNL-CS-24LAW	Splicing cassette, 24 LC APC TeraSPEED, no pigtail
EM2973-001	PNL-CS-12SCX	Splicing cassette, 12 SC LazrSPEED, no pigtail
EM2972-001	PNL-CS-12SCW	Splicing cassette, 12 SC TeraSPEED, no pigtail
EM2971-001	PNL-CS-12SAW	Splicing cassette, 12 SC APC TeraSPEED, no pigtail



Material ID	Description	Availability
<b>1000-type adapter panels</b>		
EK5809-001	Adapter panel, black, 1000-type, with 12 LC duplex adapters, blue	North Asia/ANZ Only
EK5808-001	Adapter panel, black, 1000-type, with 12 LC duplex adapters, aqua	North Asia/ANZ Only
1374463-1	Adapter panel, black, 1000-type, with 6 LC duplex adapters, blue	–
1374463-2	Fiber optic adapter plate, 12 LC duplex adapters, multimode, beige	ASEAN Only
1374463-3	Fiber optic adapter plate, 12 LC duplex adapters, singlemode, blue	North Asia/ASEAN Only
1374463-4	Fiber optic adapter plate, 6 LC duplex black	ASEAN Only
1374463-5	Adapter panel, black, 1000-type, with 6 LC duplex adapters, aqua	–
1374463-6	Fiber optic adapter plate, 6 LC duplex green	North Asia/ASEAN Only
EM2454-001	Adapter panel, black, 1000-type, blank	–





Material ID	Description	Fiber Type
<b>Fiber optic patch cords</b>		
x-2105027-y	LC TO LC 1.8mm OM3 duplex LSZH & OFNR	OM3
x-2105028-y	LC TO LC 1.8mm OS2 duplex LSZH & OFNR	OS2
x-2105061-y	LC TO LC 1.8mm OM4 duplex LSZH & OFNR	OM4
x-1920743-y	FOMM50 LEAD OM3 1.8MZ LC-LC duplex	OM3
x-2160046-y	FOMM50 LEAD OM4 1.8MZ LC-LC duplex	OM4

NOTE: Y- -X Length

- 1- -1 0.5 meters
- 0- -1 1.0 meters
- 0- -2 2.0 meters
- 0- -3 3.0 meters
- 0- -5 5.0 meters
- 1- -0 10.0 meters

Material ID	Description	Fiber Type
<b>Fiber optic pigtailed</b>		
2105003-X	LC TO LC 0.9mm OM3 LSZH	OM3
2105068-X	LC-LC 0.9T OM4 LSZH	OM4
2105016-X	LC TO LC 0.9mm OS2 PVC	OS2

NOTE: -X Length

- 1 1 meters
- 2 2 meters

These are 900 micron assemblies with LC connectors on both ends. They can be cut in half to provide two pigtailed



CommScope pushes the boundaries of communications technology with game-changing ideas and ground-breaking discoveries that spark profound human achievement.

We collaborate with our customers and partners to design, create and build the world's most advanced networks. It is our passion and commitment to identify the next opportunity and realize a better tomorrow. Discover more at [commscope.com](http://commscope.com)

**COMMSCOPE®**

---

[commscope.com](http://commscope.com)

Visit our website or contact your local CommScope representative for more information.

© 2018 CommScope, Inc. All rights reserved.

Unless otherwise noted, all trademarks identified by © or ™ are registered trademarks, respectively, of CommScope, Inc. This document is for planning purposes only and is not intended to modify or supplement any specifications or warranties relating to CommScope products or services. CommScope is committed to the highest standards of business integrity and environmental sustainability with a number of CommScope's facilities across the globe certified in accordance with international standards, including ISO 9001, TL 9000, and ISO 14001. Further information regarding CommScope's commitment can be found at [www.commscope.com/About-Us/Corporate-Responsibility-and-Sustainability](http://www.commscope.com/About-Us/Corporate-Responsibility-and-Sustainability).

CO-1121911-EN (11/18)